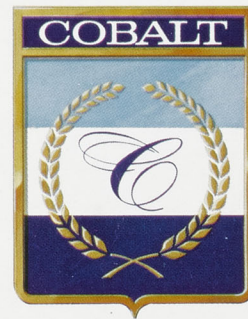




The
1981
Collection

COBALT



a simple formula that identifies a substance as crucial to man's existence as the air he breathes. Water!

Life in any form requires this simple, essential substance for its very existence, but man goes beyond this basic need for it. Although he uses water for almost every conceivable manner in his routine of daily life, the one thing that never seems to diminish is his desire to be near it, in it, or on it, for his own personal pleasure.

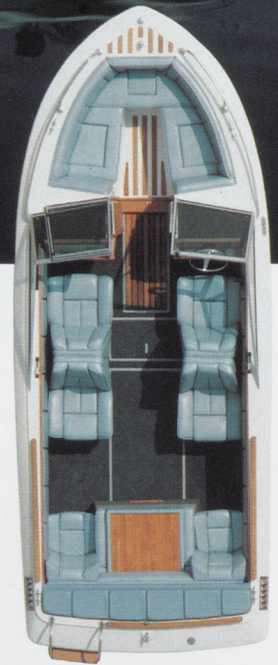
A body of water, large or small can mean excitement, adventure or just plain and simple relaxation. In a word, these things mean recreation. . . and nothing can contribute more to ones' recreational pleasures on the water than boating.

We have seen this fascinating world of boating expand in every facet in the last century and Cobalt is proud to be part of it. Our contribution to pleasures of boating has and will continue to be a sincere dedication to building a boat with design, styling and craftsmanship, that goes far beyond the ordinary, to satisfy the most discriminating of boaters.

The goal of Cobalt is to offer this elite group of people a boat with the kind of performance, comfort, convenience, safety and luxury that will make their world of water recreation an exceptional and pleasurable experience.

We believe the 1981 Collection of Cobalt models reflects our philosophy to this extent and invite you to join our special family of Cobalt owners to experience this extraordinary world of water for yourself.

Paul St. Clair
President, Cobalt Boats



COBALT 18 DV

Requests from boaters across the nation since 1973 for an 18' Cobalt Deep V prompted the creation of this highly acclaimed model.

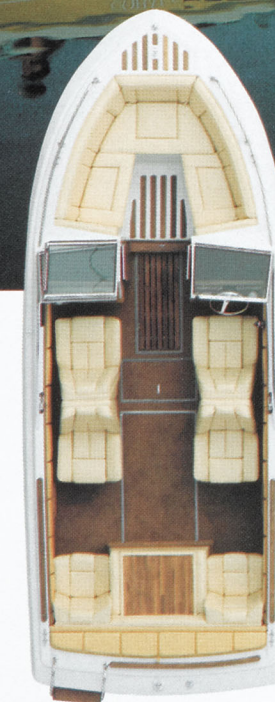
The newest addition of the Cobalt runabout family, since its introduction last year, the 18DV has exceeded popularity expectations. The versatility of its size coupled with deep V performance, makes it the pride of the Cobalt Runabout Collection.

This is the kind of luxury that has become so expectant from Cobalt. Hand sewn interior upholstery, so tastefully styled one tends to pamper it, yet a Cobalt's interior is rugged enough to challenge the great outdoors and the constant use of active boaters. Vinyl materials especially manufactured for Cobalt for extra thickness and durability make it tough, yet leather-soft for elegant appearance and superior comfort.

Pillowed design promises extraordinary comfort and sets a Cobalt's interior apart from the ordinary.

Sleeper and jump seats contain two distinct densities of foam padding for soft surface feel and firm, down deep comfort. Basic lighter color is accented by darker tones creating a shadow tone effect on coaming pads and around the motor box.

The entire upholstery of every Cobalt is hand crafted and tailored by Cobalt's own craftsmen. That's one of the reasons you will find such flawlessly finished and detailed interiors in every model.



COBALT 19 BR

The 19BR is a 19' deep V, open bow model and a superb example of how close to perfection runabout, family boating can come. Here is the kind of luxury a family deserves, the kind of performance you would expect, and the kind of convenience features anyone can appreciate.

Standard interiors with sleeper and jump seats, allow seating capacity for six, plus all the advantages and room of the spacious open bow area.

One of the most important factors in the design of a Cobalt boat is to achieve maximum comfort space and to utilize every square inch of remaining space for storage. The 19BR typifies how efficiently this has been accomplished in all models.

In the bow area, seat cushions are hinged to raise for easy access to carpeted storage areas beneath.

There are large map pockets on the starboard bulkhead immediately below the dash panel.

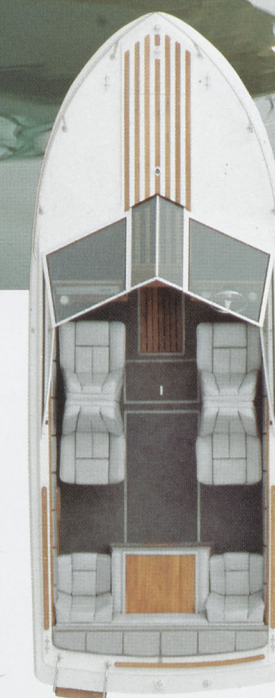
The glove compartment boasts almost two cubic feet of space for those valuable or personal items. This compartment is lockable and illuminated with a small light for night time convenience. The door, when opened, may be used as a small table.

In the floor, between the seats, a teakwood hatch raises to reveal the large ski storage area. The size of the hatch itself, is somewhat deceiving, since the actual usable area extends beyond the walk-thru threshold and up into the bow area.

Stern storage is plentiful too. On each side of the engine, beneath the jump seats, there are compartments for the bulky or wet items you want out of the way.

Top canvas storage has been conveniently designed to stow under the rear coaming pad. Optional camper top also is stowed here.

Storage space is just one of the reasons that make a Cobalt and most especially the 19BR, such a boating pleasure for the entire family.



COBALT 19 CD

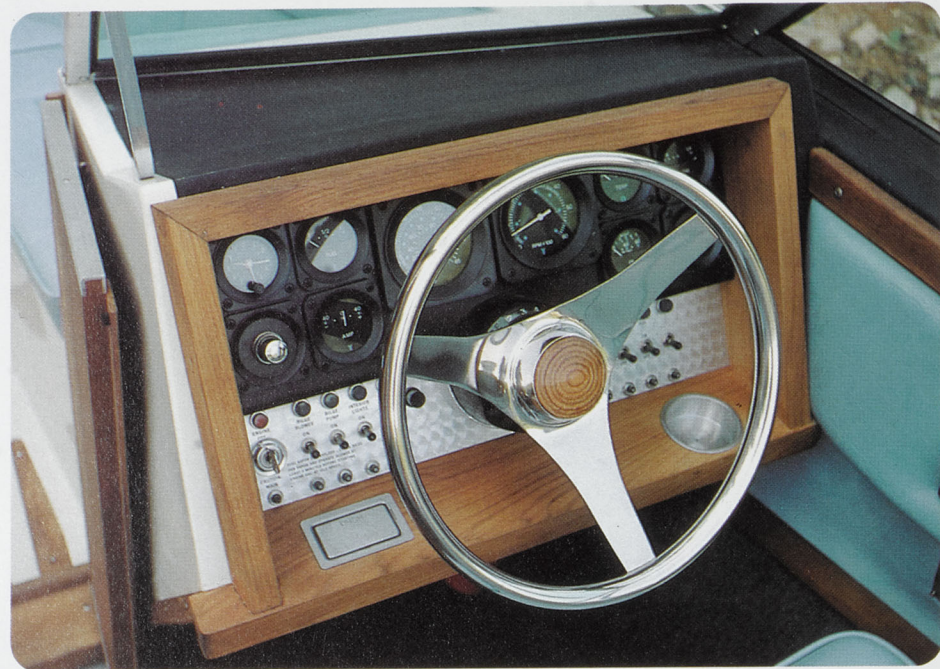
Closed deck, deep V hull and sporty appearance set the 19CD apart from ordinary boats of this size. The 19CD is destined to become a classic in its own time.

The unique windshield features an electrically operated center section that disappears into the deck with the touch of a finger. One piece stainless steel welded rail gracefully wraps around the bow to give the 19CD a smooth forward motion appearance. Below the deck, in the bow area, is a finely finished mini cabin, complete with vinyl headliner and a reversible berth cushion. The center dash features a solid teakwood step that folds up for entry to the mini cabin. Folded down, it becomes a functional step for climbing on deck.

From the driver's seat, you experience the feel of complete control. Speed, RPM, trim, amperage, oil pressure, fuel and engine temperature can all be monitored at a glance. Gauges are illuminated for night time visibility and there's even a clock with a sweep second hand included for your convenience. Instruments are set in aircraft styled bezels across the top of the panel with control switches, indicator lights and circuit breakers mounted in the lower section. As an added precaution, a warning light and buzzer is activated if the ignition is accidentally left in the on position.

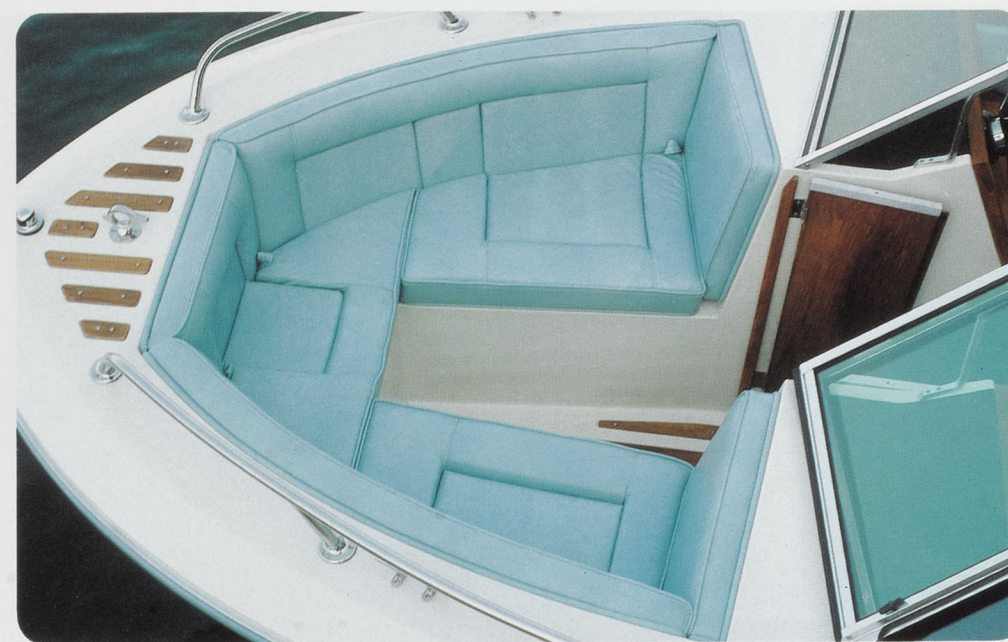
Nothing has been omitted in a Cobalt's control center in order to give you instant knowledge of all engine functions.

Runabout Standard Features



▲ **Anti-reflection** surface on deck area above control panel is flat black to eliminate glare and reflection from windshield.

◀ **Control Center** with illuminated instrumentation includes fuel, amperage, MPH, RPM, oil pressure, temperature and trim gauges. Also included is a clock, cigarette lighter, and horn button. Lower portion of panel contains: ignition warning light, indicator lights for each switch and push type circuit breakers. Ash tray and drink holder is recessed in solid teakwood surround. Steering wheel is stainless steel.



Bow Area features high back cushions that wrap the bow in solid comfort with the same elegant upholstery styling as the cockpit area. Hinged seat cushions raise for access to carpeted storage areas beneath. Floor walk space features recessed teakwood battens for non slip footing and easy clean up. Drain hole in front of threshold eliminates water collection. (Optional canvas bow cover is available for all open bow models).



Walk Thru in bowrider models features handcrafted solid teakwood walk thru doors. Capped top and bottom with metal and triple hinges for added strength. Doors swing aft and bolt latch closed. Friction catches keep them firmly in the open position. Steel yolk molded into deck adds additional strength to avoid flex in this area.



Sleeper Seats easily unlatch to lay down flat for reclining or special bracket, built into seat base mechanism, may be raised to brace aft seat cushion for lounge positioning.



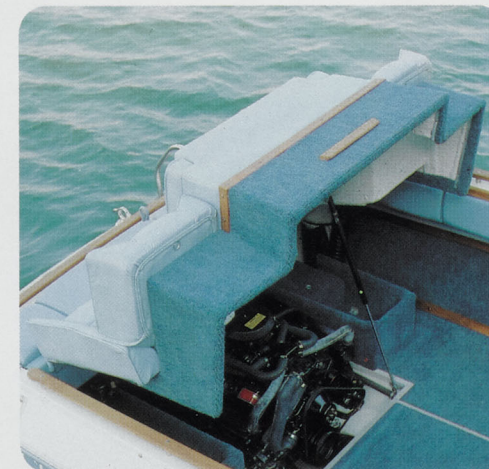
Boarding ladder is stainless steel and wraps over deck. Steps are solid grooved teakwood for slip resistance. Fold down section affords easy entry into boat from the water.



Running/Anchor Light slips into pre-mounted plug base on windshield. Threaded collar tightens or loosens by hand for easy removal or mounting. Overall lighting complies to international standards.



Drink Holder Module is located on port and starboard sides beneath side panels for the convenience of aft passengers. Ash tray and drink holders are flush mounted in solid teakwood top. Cigarette lighter and courtesy light are directly above in side panel.



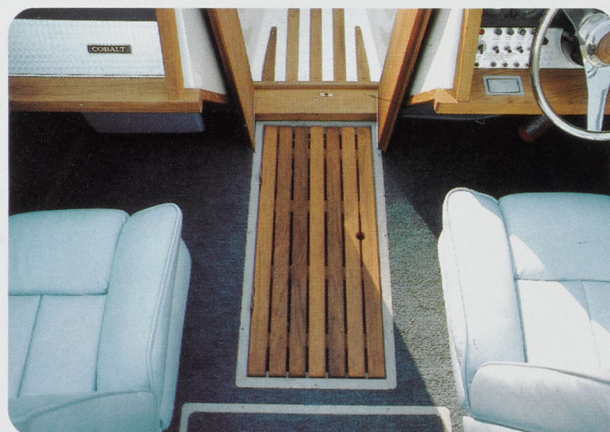
Motor Box/Jump Seats is totally utilized. Reinforced fiberglass construction makes it possible to completely expose engine and storage areas in one quick motion. Entire assembly is hinged to deck and is effortlessly raised with the help of a power assist cylinder.



Aft area is stylishly appointed and designed for passenger comfort. Jump seats are extra wide and deep dish. Arm rests provide soft cushion feel. Teakwood motor box top is a useful serving or food preparation area.



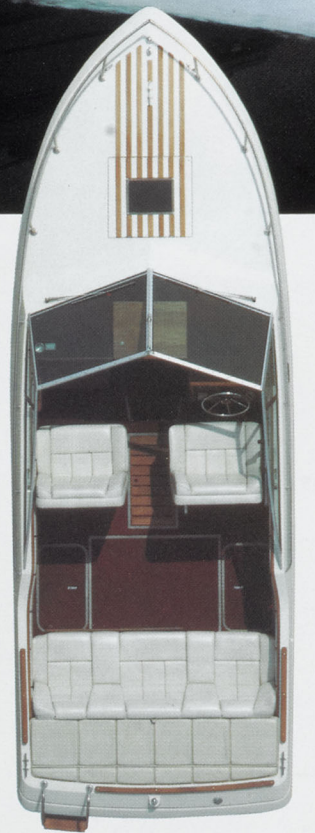
Bow Rails and fittings are polished stainless steel with welded stanchions solidly mounted into die threaded metal, molded into underside of deck.



Ski Storage is conveniently located forward. Inside space extends far beyond walk thru threshold and up into bow area. Solid teak door is flush in floor and has assist cylinder for positive open and closed position.



Top Storage is out of sight yet conveniently located under aft coaming pad. Stows, mounted on bows and wrapped in canvas boot. Area is large enough to also stow optional camper top or stern curtain with the top.



COBALT CONDESA

The Condesa is proof that Cobalt has mastered the ultimate in cuddy cabin design.

In the Condesa, Cobalt has engineered all the luxury and spaciousness you would normally expect only in a much larger boat. The Condesa is cuddy cabin pleasure in a trailerable size that allows you unlimited mobility and exquisite comfort.

You'll appreciate easy access to the cabin through extra tall and wide teakwood louvered companionway doors. Inside, there is surprising head room, and V-berths can sleep two in homelike comfort. Cushions are reversible, with tough leather-like vinyl on one side. Underneath the cushions, there is abundant space for storage.

The cockpit in the Condesa has been utilized to the fullest to give those aboard room to move about with ease. Captain's chairs are double wide and capable of seating two people. Lounge seating aft, allows room for four and may be folded down for use as an additional berth. The rear coaming pad is the ideal spot for sunbathers.

Even with all the cockpit room for passengers, storage space is plentiful. Floor storage amidship is almost five cubic feet big. Skis and canvas top stow out of sight under the rear coaming pad, with additional space for items on each side of the engine.

The Condesa is a symphony of luxury, convenience, and practicality, the ideal craft for overnight outings and long range cruising.

The 1981 Collection of Cobalt Boats continues a tradition of excellence. There are no short cuts or compromises in a Cobalt. Each is handcrafted from only the very finest materials available. Stainless steel, custom vinyls, especially selected teakwood and carpets are but a few of the ingredients that make a Cobalt such a valued and prized possession.

Condessa Standard Features



Control Center instrumentation is complete with speedometer, tachometer, ammeter, oil pressure and temperature gauges and trim indicator. Clock with sweep second hand and cigarette lighter are also included. All function switches are coupled to individual indicator lights and circuit breakers. Ash tray and drink holder are mounted in teakwood surround.



Aft Storage, under the coaming pad, includes a unique sliding rack that holds four skis on edge in padded slots for protection and easy access. This area also contains the top or camper top, which straps to the back of the stern seat. Even more storage space is available on each side.



Floor Storage between the seats and below the floor is extremely large and will hold almost any bulky item. Fully carpeted and illuminated, this area is ideal for life jackets, anchors, extra supplies, equipment, etc. Teakwood hatch door features assist cylinder for positive open and closed positions.



Seating includes extra wide Captain's chairs, providing enough room for two people comfortably. Driver's seat is adjustable fore and aft. Spacious stern seat, covers full breadth of aft area. Easily unlatched to slide forward for immediate access to engine compartment. When folded down flat, the seat may be utilized as an extra berth.



Map Pocket on back of both drive and passenger chairs is ideal for those smaller personal items that need to be out of the way but quickly accessible.



Trash Receptacle slides out below driver's seat. Hides disposables until you return to port.



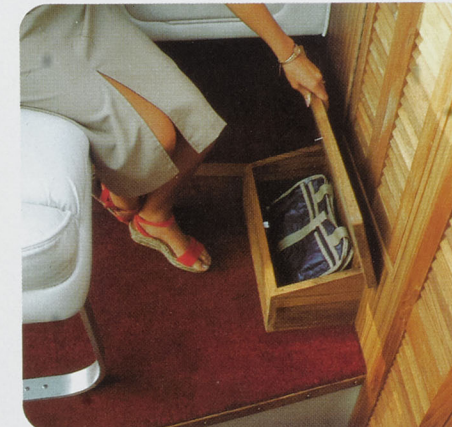
Companionway Doors are solid teakwood and louvered for ventilation. Full length piano hinge break doors in the center. Hook latch secures them open. Lockable when closed and fitted with insect screens on the cabin side.



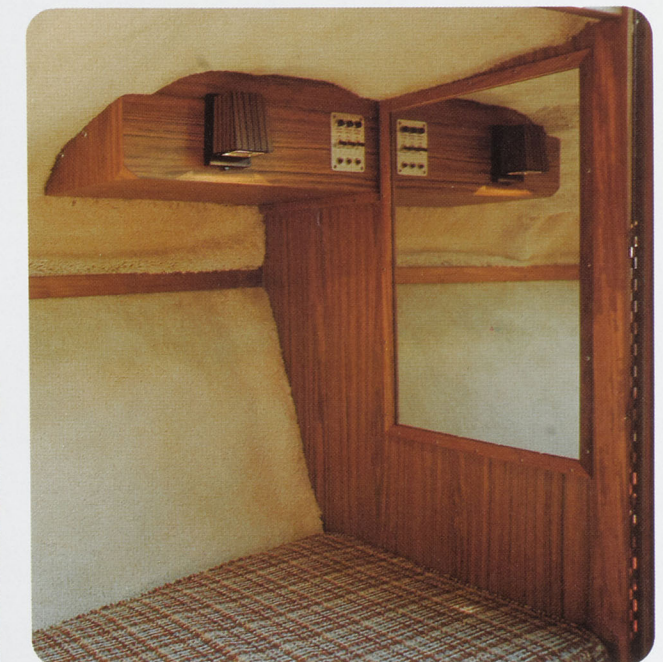
Cabin features spacious V-berths for those overnight outings. Four piece cushion ensemble is upholstered with vinyl on reverse side. Cushions are easily raised for access to storage areas beneath. An insert cushion covers floor area for sleeping. Teak trimmed side shelves on both sides extend all the way forward and allow extra space for small item storage.



Boarding Step is constructed of teakwood and stainless steel. The module contains a drink holder, ash tray and cigarette lighter.



Foot Rest for driver and passenger, doubles as an extra storage bin. Full length hinge allows top to open.



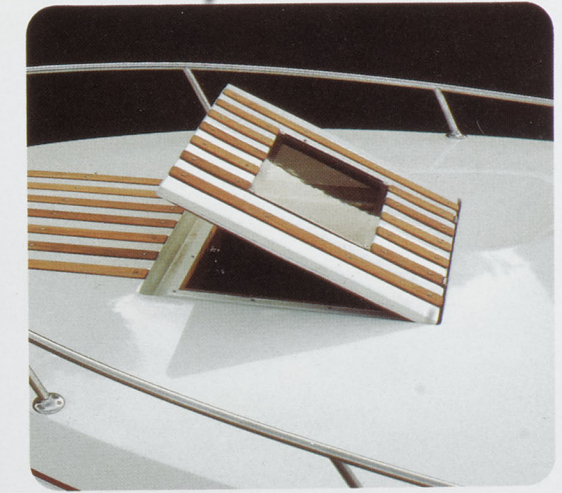
Lighting Control Panel inside cabin on starboard bulkhead, contains switches for cabin interior, engine and floor storage lighting.



Wing Vents allow for adjustable air flow circulation. Double latches increase stability and allow vent glass to remain open as little or as much as desired.



Pass Thru Door enhances openness of cabin area on the port side. Doors are lockable and have insect screens on the cabin side.



Deck Hatch is extra large for easy entry or exit. Designed for complete water-tight seal. Plexiglass window is tinted smoke gray.

Construction

1. Molds are finished to exact specifications, waxed to a high gloss, inspected continually and regularly maintained to provide the basis for hulls and decks that are flawless and excellent in appearance.

2. Spray foam is applied at scientifically predetermined places in the hull and deck for positive and level flotation. Spray foam is as thick as 5" to give maximum flotation. Foam also acts as a buffer against water noise for a quiet ride.

3. Seven layers of fiberglass, mat and woven roving, are hand laid up and hand smoothed in the hulls to remove any air pockets that might exist. A stronger, more durable hull is created through hand layup of fiberglass.

4. Stringer systems are reinforced fiberglass, laminated to the hull and fiberglass bonded to make an especially strong, integral hull and stringer. Spray foam is applied to the hull sides creating a bonded double wall hull for strength, safety and a quiet ride.

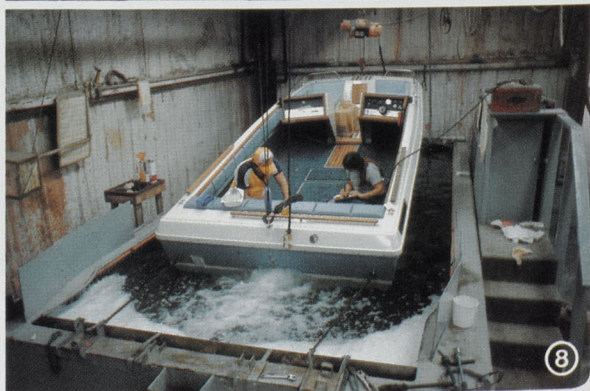
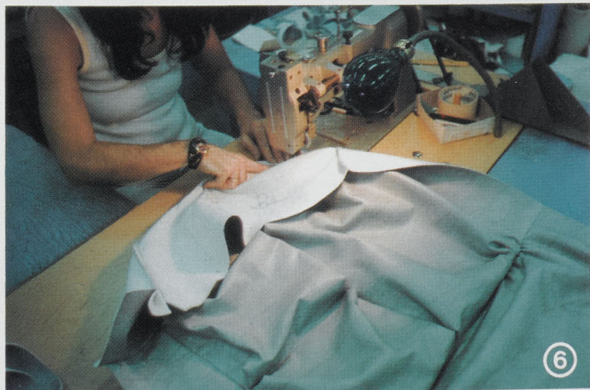
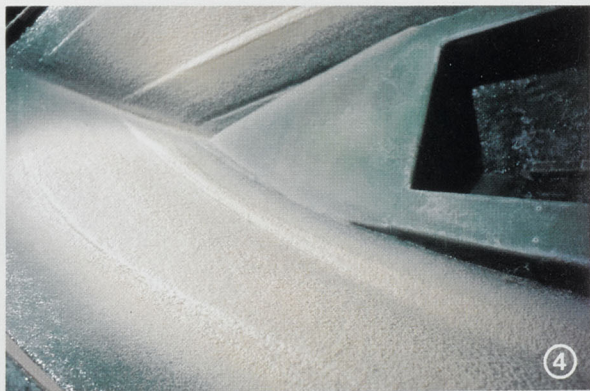
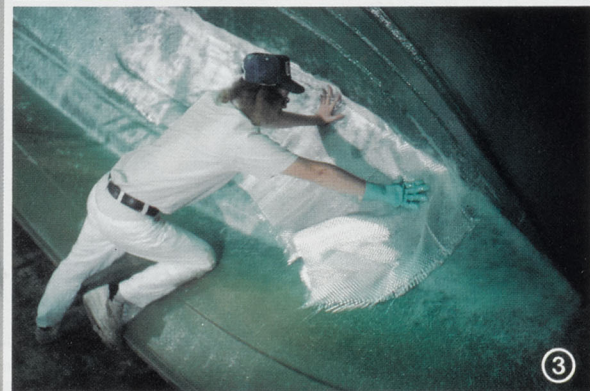
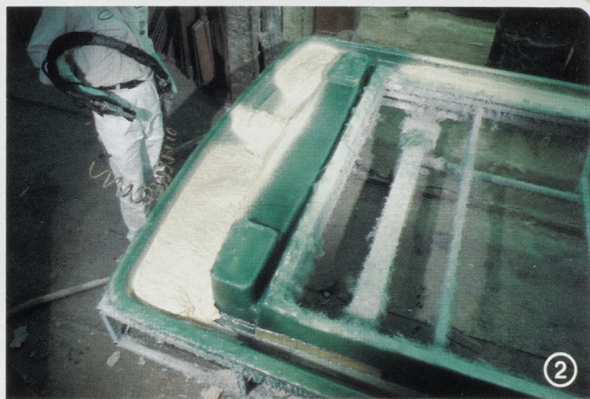
5. Assembly of the entire boat including teak, stainless steel hardware, mechanisms, carpet and electrical wiring is all done by

hand. Every part must fit exactly and operate properly before it leaves the plant.

6. Every piece of upholstery is hand cut, double stitched by hand and hand fitted by Cobalt upholsterers. Vinyl is heavy duty, 42 ounce vinyl made especially for Cobalt to be resistant to ultra violet rays and mildew. Seats are finished on undersides and backs, and vented to prevent mildew.

7. From the time the gel coat is applied in the hull and deck until the travel/mooring cover is fitted, a Cobalt undergoes continuous quality control inspections. Every aspect of every boat is checked for operation, proper installation and excellent appearance in detail finish.

8. Every boat is tested in the test tank under power to assure proper engine operation, electrical system functions and outdrive performance. Timing and dwell are adjusted, oil pressure checked and all fittings checked for proper fit.



POWER SELECTIONS

Power	Cyl.	Cu.In.	18TH	18DV	19CD	19BR	Condesa
170 OMC	V-6	229	X	X	NA	NA	NA
185 MerCruiser	4	224	X	X	NA	NA	NA
198 MerCruiser/ 200 OMC	V-8	305	X	X	NA	NA	NA
228 MerCruiser/ 230 OMC/225 Volvo	V-8	305	X	X	X	X	NA
260 MerCruiser/ 260 OMC/260 Volvo	V-8	350	X	X	X	X	X
330 TRS MerCruiser	V-8	454	NA	NA	NA	NA	X

Condesa Twin Engine Power Available With: 185 MerCruiser/198 MerCruiser/
228 MerCruiser/260 MerCruiser/260 OMC/260 Volvo

X - Available

NA - Not Available

- Power Steering Standard Equipment On All Models
- Power Trim Standard Equipment On All MerCruisers and Volvos
- Selectrim Standard Equipment On All OMC
- Swim Platform Standard Equipment On All Twin Engine Condesas
- Extra Battery and Switches Standard Equipment On All Twin Engine Condesas
- Cleaver Stainless Steel Prop Standard Equipment On 330 TRS MerCruiser
- Stainless Steel Props Standard Equipment On All Twin 260 OMC Condesas

"SPECIFICATIONS"

Model	18TH	18DV	19BR	19CD	Condesa
Hull Design	Deep Vee Tri-Hull 24° At Transom	Deep Vee 24° At Transom	Deep Vee 24° At Transom	Deep Vee 24° At Transom	Deep Vee 24° At Transom
Center Line	18'2"	18'2"	19'0"	19'0"	22'7"
Beam	89"	88½"	91"	91"	8'0"
Draft — Drive Unit Up	15"	17½"	17"	17"	18"
Freeboard — Forward	28"	30"	30"	30"	42"
Freeboard — Aft	25"	24"	27"	27"	39"
Transom Height	34"	36"	40"	40"	48"
Average Weight	2600	2700	2800	2800	4200
Average Weight — Twin					5200

B.I.A. CERTIFICATION

Boating Industry Association is a National Trade Association serving all elements of the Recreational Boating Industry. Its members include manufacturers of all types of boating equipment.

B.I.A. certification means when you, as a boat owner, have this certification, you can be assured the lighting, ventilation, steering, flotation, capacity, fuel system, horsepower rating and anything that will insure your safety are within the rigid requirements of the Boating Industry Association.

EVERY COBALT IS BIA APPROVED AND COMPLIES WITH COAST GUARD REGULATIONS.

2 YEAR LIMITED WARRANTY

Because Cobalt's policy of design for excellence dictates the inclusion of advancements whenever developed, the right is reserved to make changes in these specifications at any time without advance notice.

Cobalt Boats builds the finest quality boat obtainable. We warrant each new hull and deck to be free from structural defects in material and workmanship under normal recommended use for a period of two years from date of delivery to the original purchaser. During this period, warranty repairs will be made without charge by Cobalt Boats at their plant in Neodesha, Kansas, or at Cobalt's option, by an authorized Cobalt Dealer. Transportation to and from the plant will be at the owner's expense with all repairs subject to the authorization of factory trained personnel whose decisions will be final.

This warranty does not apply to (1) engines, outdrives, controls, batteries, or other equipment or accessories carrying their own individual warranties (appropriate adjustment to them being provided by their respective manufacturers); (2) installation of engines or accessories installed by others; (3) windshield breakage, gel coat or upholstery damage and (4) any Cobalt boat which has been altered, subjected to misuse, negligence or accident, or used for racing purposes.

The warranty listed herein constitutes the only expressed warranty and any implied warranty is limited to 2 years.

Cobalt Boats reserves the right to change prices and specifications without notice.

GENERAL TO ALL MODELS

COMFORT GROUP

Convertible Top
Body Contoured Seat Design
Tinted Windshield and Wings
Full Height Windshield
Padded Coaming Pads
Glare Proof Instrument Panel

CONVENIENCE GROUP

Full Instrumentation - illuminated
— Speedometer
— Tachometer
— Ammeter
— Oil Pressure Gauge
— Fuel Gauge
— Temperature Gauge
— Trim Indicator
— Hour Meter (not illuminated)
— Clock
Cigarette Lighters
Ash Trays
Drink Holders
Trash Receptacle - Except Runabout
Lounge Interior

Interior Courtesy Lights
Stainless Steel Stern Boarding Ladder with Folding Step
Recessed Accessory Switches With Indicator Lights

PERFORMANCE GROUP

Power Steering
Selectrim (OMC)
Power Trim (MerCruiser and Volvo)
24 Degree Deadrise Hull Design
Multiple Engine Selections

DURABILITY GROUP

Stainless Steel Hardware
— Welded Bow Rails and Fittings (Except 18TH)
— Cleats
— Boarding Ladder
— Deck Vents
— Horn Vent
— Bow Eye
— Transom Eye
— Stern Rail Hardware
— Hardware Bolts and Nuts
— Steering Wheel

Heavy Anodized Aluminum Windshield Frame
Unique Two Year Limited Warranty
Double Side Wall Hull Construction
Heavy Duty Vinyl Upholstery, Especially Manufactured To Be Resistant To Mildew and Sun Rays
Vents In Seat Cushions
Thru-Bolted Hardware
All Metal Instrument Panel and Dash Compartment Panel

APPEARANCE GROUP

Color Harmonizing Interiors
Color Coordinated Hull Accent Stripe
Color Coordinated Rubrail
Color Coordinated Polyester Carpeting
Teak Interior Trim
Teak Stern Rails
Carpeted Storage Areas
Aircraft Styled Instrument Gauge Bezels

STORAGE GROUP

Ski Rope Storage
Carpeted Storage Under All Seats
Hideaway Top Storage

SAFETY GROUP

Dual Horn
International Lighting
— Stern Light
— 20 Point Running/Anchor Light
— Combination Bow Light
Rudder Indicator
Teak Boarding Steps On Boarding Ladder
Recessed Teak Deck Battens
Deck Slip Resistant Step Between Boarding Ladder Rails
Bilge Blower
Automatic Diaphragm Bilge Pump
Safety Glass Windshield and Wings
BIA Certified
Complies With Coast Guard Regulations

SERVICE GROUP

Circuit Breakers On Electrical Systems
Ignition Warning Light and Buzzer
Heavy Duty Marine Battery
Special Formula Teak Oil
Stainless Steel Lifting Rings
Recessed, Covered Battery Box

Optional Selections



▲ **Gray Hull and Deck:** Available with blue, gray or white/blue interiors. **Sundeck Interior:** Features captain chairs, bench seat and fully padded sundeck pad.

◀ **Beige Hull and Deck:** Available with yellow, brown & white/red interiors. **Lounge Interior:** Seat wraps around aft and port side with console under glove compartment (Runabouts only). **Swim Platform:** Solid teakwood with stainless steel surround. Center section hinges except twin engine Condesas.

RUNABOUTS

COMFORT GROUP

Adjustable Fore/Aft Sleeper Seat For Driver
Passenger Lounge/Sleeper Seat
Teak Walk Thru Door (Except 19CD)
Fold-Over Center Windshield (Except 19CD)
Deep, Comfortable Bow Seats With Full Back Rests (Except 19CD)
Under Deck Pad (19CD Only)

CONVENIENCE GROUP

Below Deck Light (19CD Only)
Power Windshield Center Section (19CD Only)
Power Assist For Ski Storage Door
Power Assist For Motor Box
Built In Insulated Ice Chest
Large Capacity Fuel Tanks
— 38 Gallon, 18TH & 18DV
— 48 Gallon, 19BR & 19CD

PERFORMANCE GROUP

Trim Switch On Throttle Control (Except Volvo)

DURABILITY GROUP

Bumper Sockets (19's Only)
Integral Fiberglass Stringer System

APPEARANCE GROUP

Carpeted Bow Under Deck (19CD Only)

STORAGE GROUP

Dash Compartment (Lockable/Illuminated)
In Floor Ski Compartment
Anchor Storage With Teak Door (18TH Only)

SAFETY GROUP

Positive and Level Flotation
Teak Bow Walkway (Except 19CD)
Fire Extinguisher

COMFORT GROUP

Full Stern Bench Seat, Convertible To Berth
Teak Footrests
Adjustable Fore/Aft Captain's Chair
Reversible V-Berth Cushions
Cabin Access Screening

CONVENIENCE GROUP

Cabin
Indirect Lighting
Reading Lights
Control Panel
— Cabin Lights
— Floor Storage Light
— Engine Compartment Light
Cabin Doors Louvered
Mirror
Port Cabinet With Snack Table

Cockpit

Double Wide Captain's and Passenger's Chairs
Dual Insulated Ice Chests
Indirect Lighting
Fold Down Interior Steps
Teak Passenger Assist Handle
98 Gallon Fuel Tank

PERFORMANCE GROUP

Trim Switch On Throttle Control (Except Volvo & Twins)

CONDESA

DURABILITY GROUP

Molded V-Berth Liner
Integral Stringer System

APPEARANCE GROUP

Fully Carpeted Cabin Headliner & Sides
Removable Floor Carpet In Cabin

STORAGE GROUP

Cabin
— Under V-Berth
— Shelves Over V-Berth
— Bow Anchor Locker
— Port Cabinet

Cockpit

— Personal Passenger's Compartment (Lockable)
— Center Floor Storage
— Stern Ski Storage Area
— Footrest Storage Areas

SAFETY GROUP

Dual Windshield Wipers
Dual Fire Extinguishers
Dual Batteries And Switches (Twin Engine Only)

SERVICE GROUP

Illuminated Engine Compartment
Slide Out Bench Seat For Engine Access

OPTIONAL EQUIPMENT

ALL MODELS

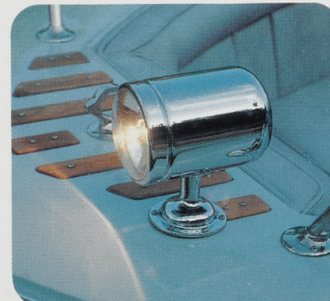
AM/FM 8 Track Stereo With Power Antenna And 4 Speakers
AM/FM Cassette With Power Antenna and 4 Speakers
Swim Platform With Fold Down Ladder
Remote Control Spot/Floodlight
Side Curtains
Stern Curtain
Camper Top
Travel/Mooring Cover
Compass
Windshield Washer
Gray Hull And Deck
Beige Hull And Deck

RUNABOUTS ONLY

Two Speed Windshield Wiper
Sundeck Interior
Lounge Interior
Cockpit Tonneau Cover (19CD Only)
Trim Tabs (19's Only)
Docking Lights (19's Only)
Bow Cushion Insert (Bowrider's Only)
Bow Tonneau Cover (Bowrider's Only)
Dual Boot Stripes (Except 18TH)
Stainless Prop Exchange (Except Volvo)

CONDESA ONLY

Docking Lights
Cockpit Tonneau Cover
Vista-Cruiser Top
Portable Head
Galley
V-Berth Center Cushion
Dinette Table
Extra Battery & Switch (Standard on Twin Engine)
Trim Tabs (Except Twin OMC)
Stainless Prop Exchange (Except Volvo) (Standard On 330 TRS MER And Twin OMC)

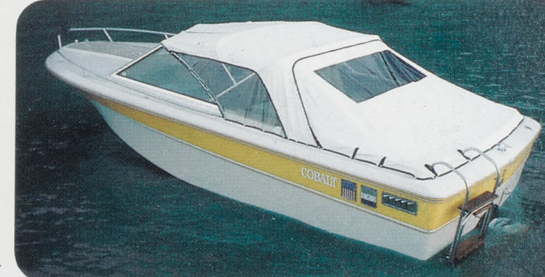


Spotlight: Flood/spot, operates by remote control for vertical or horizontal adjustment.

Compass: Aircraft type, mounts above steering wheel on dash (bowrider models.) 5" illuminated, bubble style, with double Axis Gimble system mounts in dash on Condesa and 19CD models.



Head (Condesa Only): Self-contained unit located inconspicuously under center cushion, in cabin between V-berths.



Stern Curtain: Fastens to top canvas with zipper and snaps to deck for complete cockpit enclosure.



Cockpit/Tonneau Cover (19CD & Condesa Only): For storage or trailering.



Galley (Condesa Only): Complete with 2-burner alcohol stove, electric demand water pump, stainless steel sink, 2 cubic foot refrigerator, storage areas and preparation table.



Docking Lights: Sealed beam bright and flush mounted on each side of hull bow. 19's and Condesa.



Camper Top: For overnights. Ample headroom and visibility, zippers to top canvas and snaps to deck.

A selection of: Five distinctive color combinations:



Blue

Brown

Yellow

White

Gray

Hull stripe is color coordinated to blend with interior choice.



Stereo: 8 Track or Cassette, AM/FM radio with power antenna (mounts in glove compartment on runabout models).



Captain's chair: Required with sundeck and lounge interiors. Runabouts only.



Vista-Cruiser Top (Condesa Only): Excellent visibility with stand-up headroom. Complete in one piece and custom fitted.

AUTHORIZED COBALT DEALER

