



COBALT



## COBALT BOATS

Only one boat builder in America has earned a reputation for performance, innovation, elegance and the finest handcrafted quality . . . Cobalt.

Cobalt creates boats ahead of the times. Cobalt advances to keep pace with changing lifestyles and the requirements of emerging technologies. For 20 years Cobalt has met — indeed it has led — the demands for a new measure of excellence.

Cobalt buyers have come to expect a unique balance of style, elegant design and a deep satisfaction in superb performance. The 1991 models once again form an impressive collection embodying the spirit, quality and enduring value that has been Cobalt's benchmark for more than two decades.

And only Cobalt continues to include a transferrable 5 year, hull, deck, engine and outdrive warranty as standard.

Cobalt boats are not for everyone — only those who appreciate quality and refinement. Those who expect the Cobalt caliber of excellence in all they own.

1 9 9 1



## Command Control Center



No single component of boat design and engineering demands more attention than the captain's helm. It is fitting, therefore, for Cobalt to be particularly exacting about the command control center. In fact, they were downright fussy about it. The result: the driver of the 1991 Condurre will go beyond mere steering and instrument reading to experience the feel and sensation of a luxury sports car.



Granata Design has transformed this basic functional component into an integral part of the overall interior design. It becomes a one-piece fiberglass component sweeping into the side panel and throttle control in an unbroken amalgam of elegance and practicality. The colors are classic, materials exceptional. Instruments and gauges are perfectly placed for optimum visibility. The driver maintains complete control while savoring the quiet refinement of good design.



Custom fitted, matte finish vinyls for maximum glare resistance.



Ignition safety switch (all models).



Coated aluminum panels, aircraft circuit breakers, stainless switches, all to insure reliability.

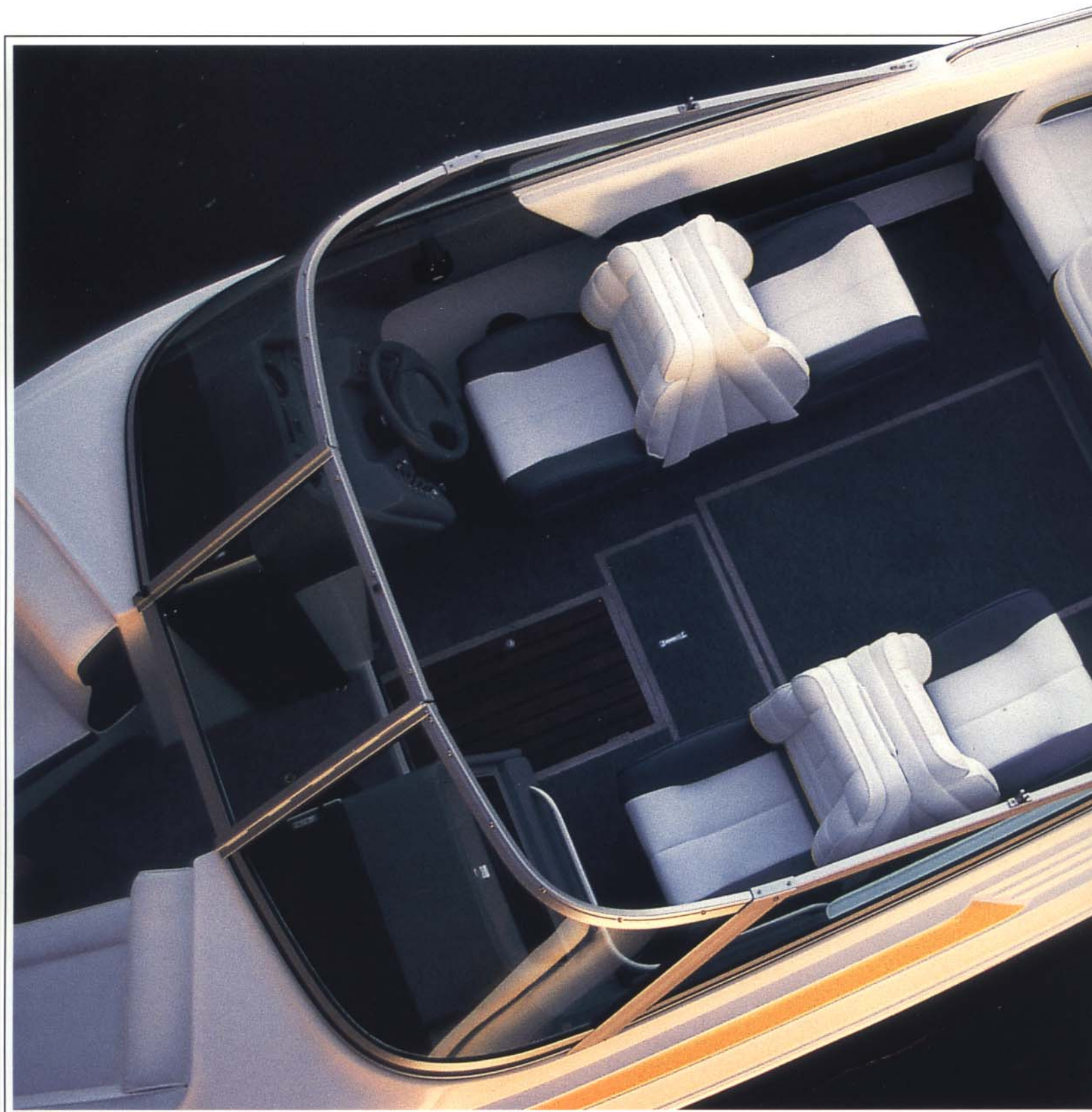


Color matched VDO instruments.



Built-in Lowrance 3200 Depth Finder (standard in some models).

*John Granata*



Veteran boaters and landlubbers alike continue to acclaim Cobalt interiors. First-time owners delight in discovering the look and feel of fine materials and seating ergonomically designed to support the body for hours of boating pleasure.

Nothing approaches Cobalt's rugged VaraDense seating built for the future. As always, the Cobalt team builds the quality deep into all they do, carefully and thoughtfully, with the owner always in mind.

Comfort and convenience are not simply catch phrases, they become fact in Cobalt boats.



Custom tailored vinyls



Multi-density foams, treated woods. Aluminum framing — just part of the VaraDense construction process.



Convenient trash receptacles.

Granata Design interiors, as shown on this Condurre 206, typify Cobalt's concern for the humans who use them.



One piece fiberglass motor box adds to longevity and serviceability.



Spacious glove box incorporates optional stereo system.



Fire extinguisher is thoughtfully out of the way.



Floor mounted insulated ice chest is self draining.



Drink holders are oversized to accommodate insulated coasters.

A Cobalt boat seat is, to an impressive degree, designed for comfort. The base is a heavy, multi-density foam for support and shape-retention. A softer, more pliable foam offers maximum comfort. A thick, rich 39-ounce vinyl with the feel of leather — made especially for Cobalt — covers the most durable seating you can buy. Three clear layers provide protection against abrasion, scuffing, and ultra-violet fading. And the vinyls are Prefixx™ coated for maximum stain resistance. Rugged yet beautiful, they're Cobalt quality all the way.

# 21BR Classic



Centerline 21' 1" 6.42M  
 Beam 8' 0" 2.44M  
 Weight 3600 lbs. 1633K  
 Fuel Capacity 60 gal. 227L

Year in, year out, the 21BR ranks as one of Cobalt's most popular models.

Owners value the high grade of teakwood. They enjoy an abundance of storage and a long list of standard equipment: stainless steel gunnel trim, bow chafe plate, integral engine ventilators and bow rail styling.

With traditional styling and features second to none, the 21BR is the ultimate classic bow rider with more useable interior space and features than most larger bow riders.



One piece motor box



Lockable ski storage



Large hanging lockers



Full instrumentation

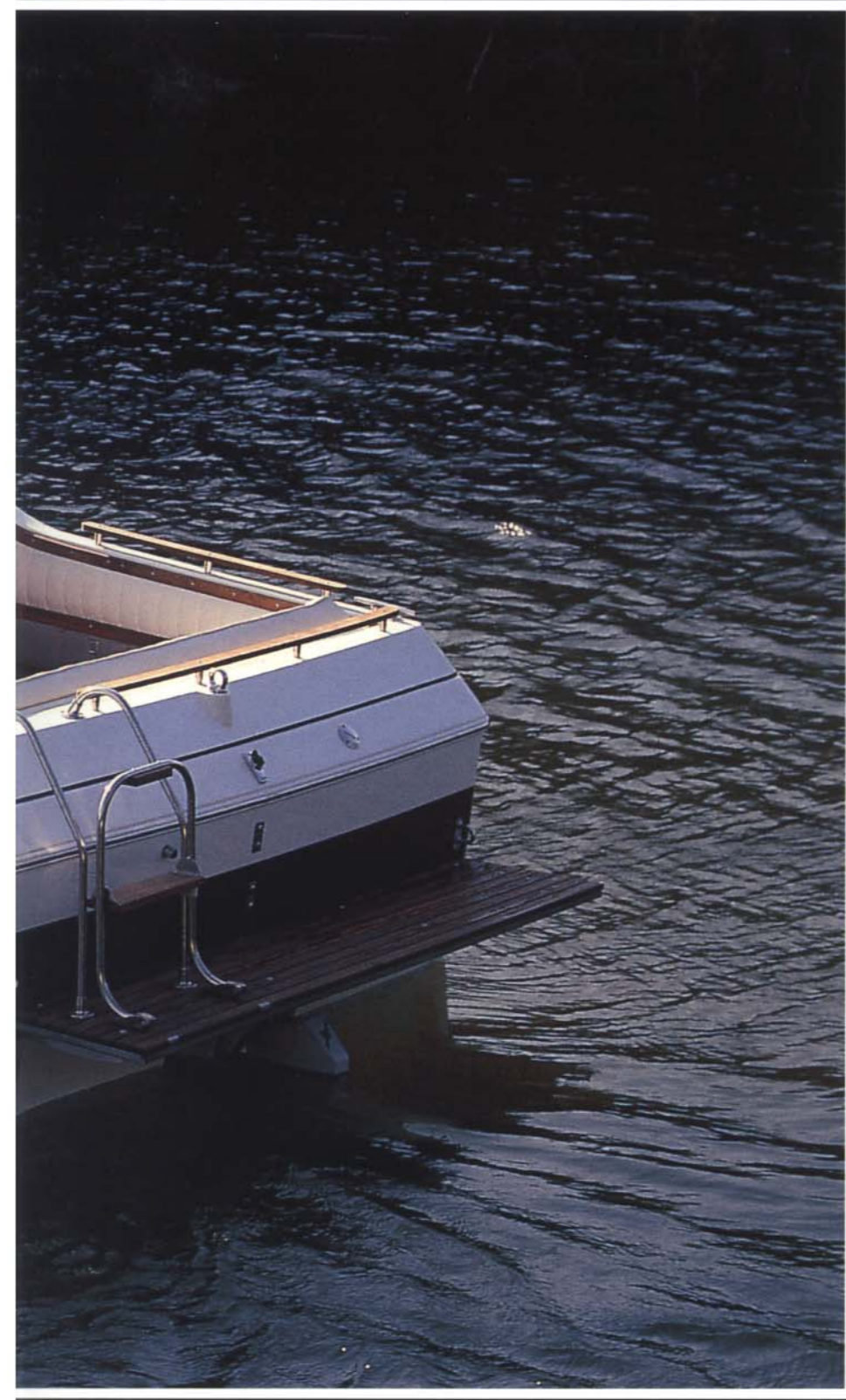


Convertible bench seat



Sleeper seats w/storage under

## 21CC Classic



Centerline 21' 1" 6.42M  
Beam 8' 0" 2.44M  
Weight 3700 lbs. 1678K  
Fuel Capacity 60 gal. 227L

The 21CC retains the timeless classic styling that has made it a favorite over the years. A Cobalt classic indeed, however, the color graphics are identical to the '91 Condúres.

More spacious than any other 21-footer on the market, the 21CC has everything you could want for second-home comfort.

Large bi-fold doors and a companionway hatch provide easy entry to the roomy cabin. Brightened with four portholes, it boasts center-facing leather chairs, teak-trimmed indirect lighting and overhead storage compartments.



Extra wide drivers chair



Leather cabin seats



Lockable floor ski storage



Built in insulated ice chest



Self draining anchor locker



Integral boarding step/drink holder



Once again, Cobalt meets the challenge. Refinement with power, spaciousness within limits, elegance married to practicality. The Cobalt 21CC.

Handling characteristics, crisp and dependable, as always in a Cobalt boat, are unaffected by the 60-gallon fuel tank carefully positioned over the center of gravity.

Small and big-block power options meet each boater's performance requirements.

The fully-instrumented dash includes rudder indicator, a comfortable leather wheel and an adjustable captain's chair for full, sure command whether sitting or standing.

Access to the engine compartment? A snap with gas-assisted cylinders on the back seat assembly. The back seats are all the way back, leaving more room in the cockpit for passengers to have fun.

The anchor locker is self-draining for worry-free storage.

Storage and more storage: overhead in the cabin, in the lockable tambour-doored glove box and under the floor in lighted, locked, secure space. A special trash bin under the captain's chair makes it easy to keep the boat ship-shape.

Teak handrails mounted on stainless steel stanchions are solidly fastened through the entire deck into metal plates embedded on the underside. Teak foredeck planking imparts sure-footed traction which also adds the styling flourish that says this is a Cobalt boat.

Of course, the transom boarding ladder is standard as are side panels with fold-out teak and stainless steel boarding steps, forward and aft lifting eyes (the aft doubling as a ski ring) and foot rests for driver and passenger comfort.

This is a Cobalt boat with the thoughtful touches you expect from the finest.

# 206 Condurre



Centerline 20' 6-1/4" 6.25 M  
 Beam 8' 2-1/2" 2.50M  
 Weight 2700 lbs. 1225K  
 Fuel Capacity 45 gal. 170L

Cobalt's designers started with a clean sheet on this 20-foot bow rider. It's original from the keel up.

The new 22° bottom enables it to run with V-8 or V-6 power. The smallest of the Condurre's, the 206 boasts more space and useable features than any of its competition. Trailering this 2700-pound beauty is a breeze.

The 206: new all around but unmistakably 100 percent Cobalt.



Spacious bow area with removable carpet



Lockable glove box

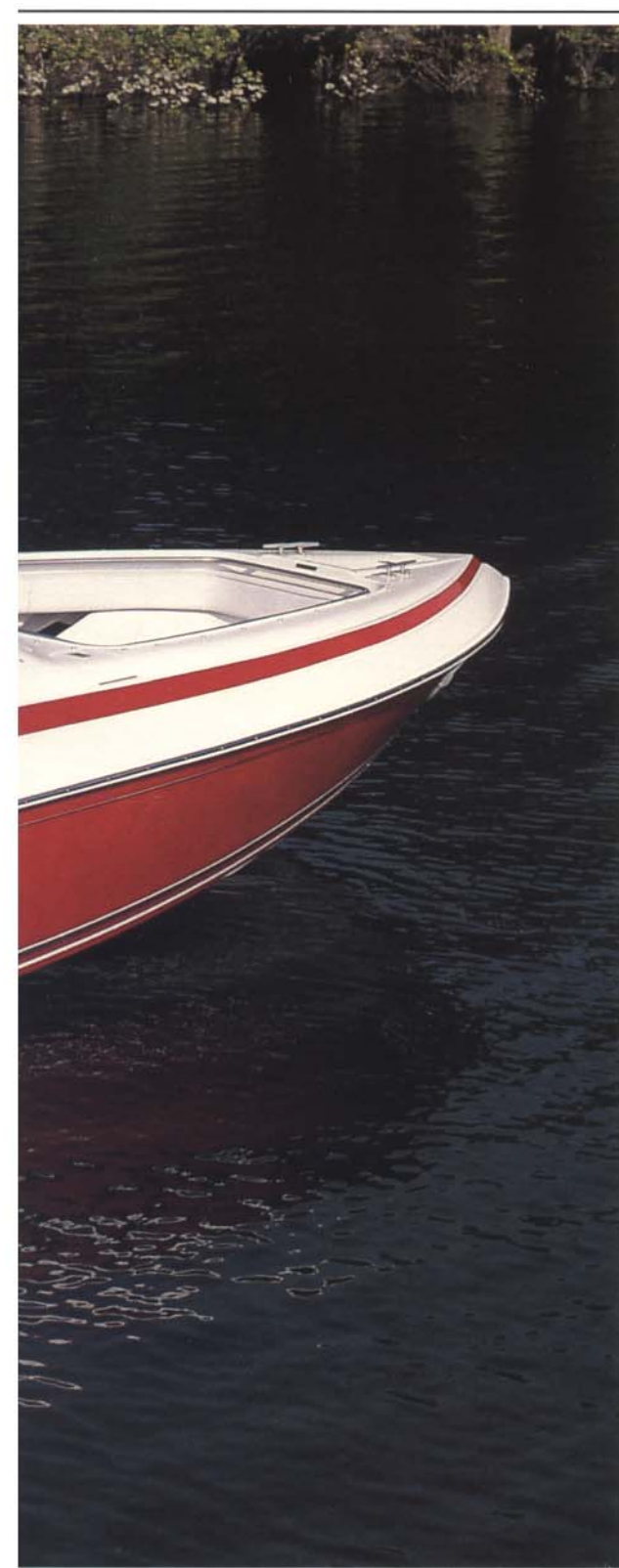


Drink holder boarding step



Hide away flip down boarding steps

# 222 Condurre



Centerline 22' 3" 6.78M  
 Beam 8' 5" 2.57M  
 Weight 3400 lbs. 1542K  
 Fuel Capacity 60 gal. 227L

Another all-new '91 from Cobalt, the 222 borrows the best from its sister Cobalts. It takes the proven 223 hull and combines it with classy deck styling of the 252.

Combining proven elements with creative innovations, and offering big block power for unbelievable responsiveness; this superb bow rider handles with the verve of the finest sports car.



Convenient hand holds



Motor box table top



Internal fender storage



Spacious bow area



Drink holder modules include stereo headset jacks

# 223 Condurre



Centerline 22' 3" 6.78M  
 Beam 8' 5" 2.57M  
 Weight 3400 lbs. 1542K  
 Fuel Capacity 60 gal. 227L

The 223: Part of the new generation of Cobalt's family sport boats with evolutionary refinements that have established Cobalt as a leading-edge designer. The 223 combines the space and amenities of its new open bow partner while retaining the traits and spirit of a sport boat.

This is truly a Cobalt boat — innovative, versatile, the finest quality down to the last nut and bolt.



Lockable cabin entry



Spacious cabin



Convertible bolster bucket seats

# 243 Condurre



Centerline 23' 10" 7.26M  
 Beam 8' 0" 2.44M  
 Weight 4100 lbs. 1860K  
 Fuel Capacity 90 gal. 341L

Here is live-aboard luxury with sporty styling the entire family can appreciate. The 243 has seating for five in the cockpit and a cabin that can accommodate two very comfortably for an overnighter or a weekend outing. The 243 is unique, sleek and truly sets the pace for performance. Its sporty cockpit belies its outstanding overnight capabilities. A versatile, generous, sophisticated boat, it is unquestionably Cobalt.



Berth incorporates storage area



Built in swim platform



Sundeck area includes ski tow eye



Optional galley



Lockable cabin door w/access to fore deck



Self draining anchor locker

Conversation and companionship are easy in the thoughtfully-designed 243 Condurre cabin with its plush fabrics and genuine leather, center-facing captain's chairs.

A refreshment center with decanters, lots of storage and a 2-1/2-gallon pressurized water supply invite entertaining. The Blaupunkt stereo system mounted in the cabin is standard. The Blaupunkt is coded so it works only with your personal code numbers and can be removed easily for security.

A unique cabin lighting system combines overhead, direct and indirect lights for a serene eye-pleasing atmosphere. Shelves that wrap around the cabin perimeter incorporate side lighting. Floor lighting makes it easy to set the mood. Storage under the sleeping area accommodates personal items and bedding while leaving space for the optional porti-potti.

The cockpit seats five comfortably. Bolster bucket seats lend style and comfort whether sitting or standing.

The back seat is incorporated into the one-piece motor box. Lots of storage under this seat, with plenty of space for the convertible top, water skis, etc. Excellent accessibility to the engine is extended into the night with lighting of the entire area.

An ice chest, trash container and huge, lighted storage compartment are cleverly in-floor — out of the way, yet accessible.

The ingenious sliding entry door has built-in steps for access to the forward deck through the center windshield. The deck, with its anti-slip surface, incorporates a forward, self-draining anchor locker.

Boaters especially appreciate the outstanding capacity of the 90-gallon fuel tank and the integrated swim platform with built-in boarding ladder.

This is a Cobalt from stem to stern.

# 252 Condurre



Centerline 25' 2" 7.67M  
 Beam 8' 6" 2.59M  
 Weight 4300 lbs. 1950K  
 Fuel Capacity 90 gal. 341L

The 252 Condurre: One of the most exciting packages on the water today. A unique hull design imparts superb handling characteristics rare in a boat this size.

With the latest design features and styling, the 1991 252 Condurre is one of the most brilliant all-around family boats on the market today.



Large bow entry with doors



Self draining anchor storage



Sleeper seats convert to lounges



Integral fender storage

## 253 Condurre



Centerline 25' 2" 7.67M  
 Beam 8' 6" 2.59M  
 Weight 4300 lbs. 1950K  
 Fuel Capacity 90 gal. 341L

The 253 Condurre, Cobalt's largest sport boat, combines the styling and luxury that the performance enthusiast demands. And, of course, it is made with the characteristic Cobalt finesse.

The 253 sleeps two in complete comfort. Its unique dash incorporates a wraparound center console and standard Blaupunkt stereo system, a trash container, lockable helm storage compartment and steps for access to the foredeck.

The smell of real leather. Color-matched VDO gauges. Superb performance, crisp sports car handling. All elements that go into Cobalt's 253.



Cabin seating



Double berth and leather seating include refreshment center



Cabin entry includes step down



Driver control center



Electrically operated, one piece motor box includes sundeck

The 253 is Cobalt's 25' Cuddy Cabin sport boat. With the extremely spacious cockpit, it still has one of the most unique cabin arrangements today. Function and design have combined in the cabin for a full length double berth plus comfortable, circular leather seating for two. There is also a complete refreshment center with sink and pressurized water supply.

The focal point of the 253, however, is the driver's station. Incorporating a wrap-around console, this is the boat driver's dream. All controls, even the stereo, are at his fingertips. The console also includes steps to the foredeck for boarding, line handling, etc. The cockpit ice chest, seating arrangement, and overall spaciousness make the 253 excel in all boating environments. Whether you are pulling the kids on skis, taking the family to dinner and an evening cruise, or spending the night out, the 253 is something to behold.

## 255 Condurre



Centerline 25' 2" 7.67M  
 Beam 8' 6" 2.59M  
 Weight 4900 lbs. 2223K  
 Fuel Capacity 83 gal. 314L

The most unique cabin floor plan on the market today is Cobalt-designed for today's overnight boater.

With variable hull deadrise and a keel, you'll experience unbelievable handling and peak performance — especially critical when pulling skiers.

With foresight and canny engineering, Cobalt has created a boat with the luxury and features boaters expect in the best. The Cobalt 255.



Spacious seating arrangements



Large cabin entry



Self draining anchor storage



Spacious forward cabin (pulls out for sleeping)



Full galley, standard



Galley includes refreshment center



The latest addition to the 25-foot models, the 255 Condurre is the innovative key to large cabin space with full cockpit size.

The easy-entry sliding door reveals a full galley including countertop refrigerator, marine stove, sink, toilet and wrap-around leather seating. Split port and starboard, allows standing room in the entry for easy access to both sides. The refrigerator operates on its own electrical system or uses 110V shore power. Fresh water from a 20-gallon tank flows to the sink with an electric pump.

A five-foot berth extends to a full seven feet when the base is extended. The sliding cabin entry door features built-in, non-slip steps for easy access to the deck through the center windshield.

Cobalt moves the rear seating all the way to the transom to gain an incredibly spacious cockpit. Cobalt makes that seating convertible, creating an extra berth. An electrically-operated switch swings the whole unit up, revealing more storage and full access to the engine.

Between the driver and passenger seats, an extra-large storage space. Behind them, dual ice chests. Aft, the swim platform, fresh-water washdown and hideaway boarding ladder are standard features. That's the Cobalt touch.

## 263 Condurre



Centerline 26' 3" 8.0M  
 Beam 9' 5" 2.87M  
 Weight 6100 lbs. 2767K  
 Fuel Capacity 100 gal. 379L

The flagship of the Cobalt fleet: the 263 Condurre. An outstanding achievement in elegance, beauty and unique interior design.

The cabin is richly appointed with the ingenious, elegant touches expected from Cobalt. Six feet of headroom lend a spaciousness not often found in boats this size. Plush fabrics on the berths, side panels and headliners complement the genuine leather seating.



Fwd cabin dinette table lowers for sleeping



Cockpit ice chest



Aft fresh water shower/wash down



Aft cabin entry w/dressing area



Enclosed head w/shower



Electric motor box/seating area doubles as storage compartment



At 26' 3" plus the bow pulpit, and with a 9' 5" beam, the 263 tames rough waters as easily as a much larger boat. The unique keel and variable deadrise translate to sprightly, assertive response to the helm.

The foredeck allows access to the bow pulpit and forward self-bailing anchor locker. Its rakishly-slanted handrails are designed for safety as well as style.

The distinctive semi-circular side seating in the cockpit allows passengers access to the cabin while they enjoy the outdoor ride. Entertainment and riding comfort are unparalleled. Steps in the forward end of the seating lead to the foredeck through the walk-through windshield. A handrail at the back offers added safety. The cockpit also boasts drink holders, an ice chest and a compartment for personal effects.

The captain's chair is a bolstered bucket seat that affords superior comfort while the driver remains seated behind the protective windshield. Or, the seat can be quickly flipped up so the driver can stand for maximum visibility while docking or close maneuvering.

Aft, the 263 offers a built-in swim platform, a ladder that flips down for easy access, a fresh-water wash-down and shower.

The entire rear bench seat opens with the touch of an electric switch to expose spacious storage over and around the engine compartment.

A 30-gallon pressurized water system serves the galley, enclosed head and the cabin shower.

Refrigerator, alcohol stove and sink round out the galley. Hand-pump decanters are included for the refreshment center.

The innovative dinette table easily adjusts on its hydraulic cylinder base to berth height. A privacy door protects the aft cabin and dressing area.

But, even with all these features, the 263 must be experienced because what it does on the water cannot be described.

## Selected Standard Features



One piece motor box



Lockable ski storage (21BR shown)



Built in drink holder



Integral swim deck (206 shown)



Self draining anchor locker



Fender storage



Bow mounted scuff plate



Ignition safety switch (



Leather wrapped whee



Genuine leather cabin seating



Hanging lockers (21BR shown)



Convenient hand holds



Aft shower (some models)

## Complete Listing

### COMFORT GROUP

	206	21BR	21CC	222	223	243	252	253	255	263
Adjustable Driver Seat	•	•	•	•	•	•	•	•	•	•
Convertible Top	•	•	•	•	•	•	•	•	•	•
Sundeck Interior	•	•	•	•	•	•	•	•	•	•
Bolster Bucket Driver Seat					•	•	•	•	•	•
Lay Down Seat	•	•	•	•	•	•	•	•	•	•
Stereo System	•	•	•	•	•	•	•	•	•	•
Curved Glass Windshield	•	•	•	•	•	•	•	•	•	•
Walk Thru Doors	•	•	•	•	•	•	•	•	•	•
Tinted Windshield	•	•	•	•	•	•	•	•	•	•
Leather Wrapped Steering Wheel	•	•	•	•	•	•	•	•	•	•

### CONVENIENCE GROUP

	206	21BR	21CC	222	223	243	252	253	255	263
Walk Thru Windshield	•	•	•	•	•	•	•	•	•	•
Boarding Ladder	•	•	•	•	•	•	•	•	•	•
Ice Chest	•	•	•	•	•	•	•	•	•	•
Circuit Breakers	•	•	•	•	•	•	•	•	•	•
Color Matched VDO Instruments	•	•	•	•	•	•	•	•	•	•
Galley w/Sink, Stove and Refrigerator								•	•	•
Gas Assist Ski Door	•	•	•	•	•	•	•	•	•	•
Gas Assist Motor Box	•	•	•	•	•	•	•	•	•	•
Electric Motor Box								•	•	•
Integral Swim Platform	•	•	•	•	•	•	•	•	•	•
Large Capacity Fuel Tank	•	•	•	•	•	•	•	•	•	•
Pump Out Head										•
Transom Door										•
Refreshment Console										•
Trash Receptacle	•	•	•	•	•	•	•	•	•	•
Hour Meter	•	•	•	•	•	•	•	•	•	•
In-Dash Depth Sounder										•
Fender Storage										•

### PERFORMANCE GROUP

	206	21BR	21CC	222	223	243	252	253	255	263
Jim Wynne Hull Design	•	•	•	•	•	•	•	•	•	•
Performance Matched Power Combinations	•	•	•	•	•	•	•	•	•	•
Power Steering	•	•	•	•	•	•	•	•	•	•
Power Trim	•	•	•	•	•	•	•	•	•	•

### SERVICE GROUP

	206	21BR	21CC	222	223	243	252	253	255	263
Large Engine Access	•	•	•	•	•	•	•	•	•	•
Fresh Water Wash Down										•
Lifting Rings		•	•							

### DURABILITY GROUP

	206	21BR	21CC	222	223	243	252	253	255	263
All Aluminum Instrument Panel	•	•	•	•	•	•	•	•	•	•
Double Side Wall Hull Construction	•	•	•	•	•	•	•	•	•	•
Stainless Steel Hardware and Rails	•	•	•	•	•	•	•	•	•	•
Five Year Powertrain Warranty	•	•	•	•	•	•	•	•	•	•
Bow Scuff Plate	•	•	•	•	•	•	•	•	•	•

### STORAGE GROUP

	206	21BR	21CC	222	223	243	252	253	255	263
Anchor Storage Locker			•	•	•	•	•	•	•	•
Carpeted Storage	•	•	•	•	•	•	•	•	•	•
Hanging Locker(s)			•	•	•	•	•	•	•	•
Hideaway Top Storage	•	•	•	•	•	•	•	•	•	•
Ski Rope Storage			•	•	•	•	•	•	•	•
Ski Storage	•	•	•	•	•	•	•	•	•	•

### SAFETY GROUP

	206	21BR	21CC	222	223	243	252	253	255	263
Bilge Blower	•	•	•	•	•	•	•	•	•	•
Automatic Bilge Pump	•	•	•	•	•	•	•	•	•	•
Dual Horns	•	•	•	•	•	•	•	•	•	•
Fire Extinguisher	•	•	•	•	•	•	•	•	•	•
Glare Resistant Instrument Panel	•	•	•	•	•	•	•	•	•	•
Rudder Indicator	•	•	•	•	•	•	•	•	•	•
Ignition Safety Switch	•	•	•	•	•	•	•	•	•	•
Halon Fire Extinguisher										•

Specifications and features are subject to change without notice

## Available Options for Your Personal Selection



243 full galley



Teak swim platform available on classics



Starboard wiper



Dinette table



21CC full galley



Spotlight also avail with deck mount (shown on 263)



Bow cushion insert



Pull out security stereo system



Large Compass



Small compass



Docking lights available for most models

## Complete Listing

### POWER INSTRUMENTATION:

Battery Charger																				
Compass, Large		•	•	•	•	•	•	•	•	•	•	•	•	•	•	•	•	•	•	•
Compass, Small	•	•	•	•	•	•	•	•	•	•	•	•	•	•	•	•	•	•	•	•
Docking Lights	•	•	•	•	•	•	•	•	•	•	•	•	•	•	•	•	•	•	•	•
Extra Battery Switch	•	•	•	•	•	•	•	•	•	•	•	•	•	•	•	•	•	•	•	•
Fresh Water Cooling:																				
5.7 Litre MER		•	•	•	•	•	•	•	•	•	•	•	•	•	•	•	•	•	•	•
7.4 and 454 MAG MER		•	•	•	•	•	•	•	•	•	•	•	•	•	•	•	•	•	•	•
570 VOLVO		•	•	•	•	•	•	•	•	•	•	•	•	•	•	•	•	•	•	•
740 VOLVO		•	•	•	•	•	•	•	•	•	•	•	•	•	•	•	•	•	•	•
Halon Fire Extinguisher	•	•	•	•	•	•	•	•	•	•	•	•	•	•	•	•	•	•	•	•
Kiekhafer Control, Sgl. Eng.																				
Kiekhafer Control, Twin Eng.																				
Lifting Ring, Fwd.	•	•	•	•	•	•	•	•	•	•	•	•	•	•	•	•	•	•	•	•
Lowrance Depth Finder	•	•	•	•	•	•	•	•	•	•	•	•	•	•	•	•	•	•	•	•
Transducer	•	•	•	•	•	•	•	•	•	•	•	•	•	•	•	•	•	•	•	•
Remote Control Spotlight	•	•	•	•	•	•	•	•	•	•	•	•	•	•	•	•	•	•	•	•
Stainless Prop Exchange (MER)	•	•	•	•	•	•	•	•	•	•	•	•	•	•	•	•	•	•	•	•
Thru Hull Exhaust:																				
7.4 Litre MER		•	•	•	•	•	•	•	•	•	•	•	•	•	•	•	•	•	•	•
454 MAG BRAVO		•	•	•	•	•	•	•	•	•	•	•	•	•	•	•	•	•	•	•
740 VOLVO		•	•	•	•	•	•	•	•	•	•	•	•	•	•	•	•	•	•	•
Trim Tabs	•	•	•	•	•	•	•	•	•	•	•	•	•	•	•	•	•	•	•	•
Windshield Wiper, Stbd.	•	•	•	•	•	•	•	•	•	•	•	•	•	•	•	•	•	•	•	•
Windshield Wiper, Dual	•	•	•	•	•	•	•	•	•	•	•	•	•	•	•	•	•	•	•	•

### SEATING:

Bow Cushion Insert	•	•				S														
Cabin V-Berth Insert w/Galley																				•
Cabin V-Berth Insert wo/Galley																				•
Bench Seat Motorbox:																				
Sleeper Seats																				
Sleeper/Port Bol Buck/Stbd																				
Bolster Buckets																				
Captain's Chairs																				
Sleeper/Port Capt. Chair/Stbd																				
Jumpseat Motorbox:																				
Sleeper Seats	S	S																		
Sleeper/Port Bol Buck/Stbd	•	•																		
Sundeck Motorbox:																				
Sleeper Seats																				
Sleeper/Port Bol Buck/Stbd																				
Bolster Buckets	•	•	S	S																

### CANVAS:

Cover, Bow Tonneau	•	•																		
Cover, Cockpit Tonneau	•	•	•	•	•	•	•	•	•	•	•	•	•	•	•	•	•	•	•	•
Cover, Travel Mooring	•	•	•	•	•	•	•	•	•	•	•	•	•	•	•	•	•	•	•	•
Curtain, Stern	•	•	•	•	•	•	•	•	•	•	•	•	•	•	•	•	•	•	•	•
Curtains, Side	•	•	•	•	•	•	•	•	•	•	•	•	•	•	•	•	•	•	•	•
Top, Bimini	•	•	•	•	•	•	•	•	•	•	•	•	•	•	•	•	•	•	•	•
Top, Camper																				

### COMFORT/CONVENIENCE:

AM/FM Cassette Stereo System	•	•	•	•	S	S	S	S	S	•	•	•	•	•	•	•	•	•	•	•
Premium Stereo Upgrade	•	•	•	•	•	•	•	•	•	•	•	•	•	•	•	•	•	•	•	•
Power Antenna (only)	•	•	•	•	S	S	S	S	•	•	•	•	•	•	•	•	•	•	•	•
Stereo Speakers (only) (4)	•	•	•	•	S	S	•	•	•	•	•	•	•	•	•	•	•	•	•	•
Porti-Potti																				
Pump Out Head					•	•	•	•	S	•	•	•	•	•	•	•	•	•	•	•
Pump Out Head w/Macerator																				
Gray Water System																				
Air Conditioning																				
Cockpit Dinette Table																				
Fresh Water Wash Down	•	•	•	•	•	•	•	•	•	•	•	•	•	•	•	•	•	•	•	•
Galley																				
Hot Water System																				
Portal Light, 2 Additional																				
Swim Platform w/Ladder	S	S	S	S	S	S	S	S	S	S	S	S	S	S	S	S	S	S	S	S
Walk Thru Doors	•	•	•	•	•	•	•	•	•	•	•	•	•	•	•	•	•	•	•	•

### OPTION PACKAGE

• Available option    S Included as standard equipment

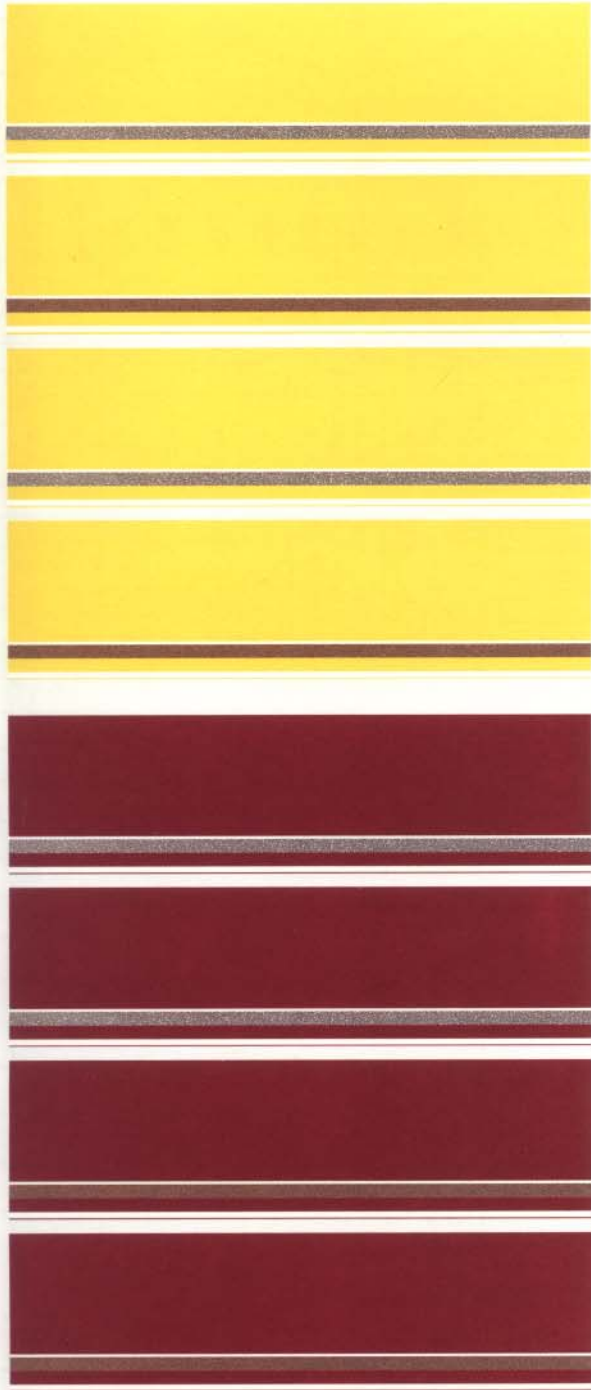
Specifications and features are subject to change without notice

**HULL STRIPE**

**COLOR**

**VINYL**

**CARPET**



1

2

3

4

5

6

7

8



**CABIN INTERIORS**

1



**SEATS**

**MATTRESS**

**SIDEWALL**

**TRIM**

**CARPET**

USED WITH  
COLOR  
OPTION  
1, 3, 5, 6,  
9, 10, 13,  
14, 17, 18

2



USED WITH  
COLOR  
OPTION  
2, 4, 7, 8,  
11, 12, 15,  
16

**HULL STRIPE**

**COLOR**

**VINYL**

**CARPET**



9



10



11



12



13



14



15



16



17



18



Cobalt upholstery is built to exacting VaraDense™ standards. The finest vinyls and other materials are used throughout. All exterior vinyls are treated with PreFixx™ giving the greatest protection and endurance available.

Cobalt reserves the right to make changes in colors, combinations and materials without prior notification or obligation.

Printed samples may vary from actual colors.

---

## Cobalt Takes Your Boating Fun Seriously in Everything They Do.

---



The Cobalt people take your boating fun seriously in everything they do. In the things you see and those you don't. From the keel to the deck, the inner structure to the



skin, the mechanicals to the flourishes, they always have the customer uppermost in mind. That's what makes a Cobalt an extraordinary experience in boating.

It starts with design. They analyze customers' demands compiled from years of research and experience. They listen and learn more year by year about what it takes to build the near-perfect boat. Their staff of professional engineers and designers use sophisticated computers to shape the creative ideas into detailed drawings and specifications.

They then commission hull designer Jim Wynne to develop running surfaces which all discriminating owners demand. Granata Design creates unique innovations in upholstery and graphic designs, convenience and functional amenities and highly contemporary layout schemes for cabin and



cockpit . . . all of which contribute to the basic Cobalt equation — function + form, must = luxury.

In fashioning the whole, meticulous attention is paid to individual elements. Electrical wiring, seat frames, wood and Lexan components, motor boxes,

doors, ice chests, drink holders and a multitude of conveniences must be compatible with one another to blend into the overall design.



After groundwork is firmly laid, the skilled artisans in each area begin putting their craftsmanship to work. Supplied with the best materials available, they take no shortcuts. They



work with a pride, rare in today's world.

Cobalt is not an assembly plant: it's a shop of fine artisans who take up to 12 days to craft a Cobalt boat, sometimes

longer. (The industry average is considerably less.) The artisans are not slow, they're careful. They build no more boats than can be handcrafted with the very highest quality possible.



Cobalt customers demand the best so they do it the best way: themselves. Cobalt's shop is divided into sections for each component, each designed for maximum efficiency. Electrical systems, upholstery, teak, Lexan and

plexi, and metal, all have their specialized equipment and trained personnel.

While the work on the sub-assemblies is progressing, hull and deck molds are being polished by hand, a chore that takes place after each part is removed. After only five uses, each mold is



completely refurbished to ensure flawless parts and perfect uniformity.

The fiberglass process and Cobalt's own HydroLam™ method involves seven hand-applied layers of material. From the first, the final product affords unyielding durability and strength. Each layer is allowed to



cure separately before applying the next. The final assembly remains in the mold four or five days to ensure proper shape virtually forever.

It is important to note that Cobalt utilizes only marine-grade plywood and all wood parts, such as seat assemblies



and side panels, are immersed in a preservative to guard against rot and mildew.

Just before hull and deck are joined together, the engine installers make

sure the engine is mounted in the exact position for perfect alignment with transom and outdrive for maximum, trouble-free performance.



In keeping with their goal to build as much themselves as possible, Cobalt boasts an elaborate and impressive metal shop. This in-house facility bends, welds and polishes all stainless steel rails into a one-piece component.

To ensure the quality and fit necessary to meet their rigid quality standards, the shop machine stamps, cuts, and forms seat mechanisms and other metal parts.



Rails, cleats and other hardware mounted onto the deck or floor are bolted clear through the deck to aluminum plates encased in fiberglass on the underside. This added dimension of strength and



stability to Cobalt boats is uniquely Cobalt. You don't see them, but you trust the security of these above-and-beyond measures.

Every Cobalt hull is meticulously checked electronically in specific areas to ensure uniform standards of thickness. If, for some reason, the hull fails any of these 50 checks, the entire hull is destroyed. Cobalt's commitment to quality is unwavering.

Every Cobalt boat is checked and tested under power in Cobalt's own test tank. Painstaking checks ensure that all electrical, engine and outdrive systems meet their exacting standards.



No boat leaves the shop without passing every rigorous test.

From design to fitting the individually-crafted canvas cover, Cobalt people are absorbed in the never-ending quest for perfection, in the steadfast pursuit of Cobalt quality.

The true measure of a boat's performance is the precision with which it is put together. It is the subtle yet powerful feel of quality, the realization of the boater's highest expectations. It is Cobalt.



  
COBALT

“Symbol of Boating Excellence”

# COBALT '91 SPECIFICATIONS

## 21CC CLASSIC

Deadrise	20"
Centerline	21'1"
Beam	8'0"
Draft (Drive up)	17"
Freeboard FWD	38"
Freeboard AFT	35"
Transom Height	42"
Weight Dry	3700
Fuel Capacity	60 Gal.
Water Capacity	0
Bridge Clearance w/o Nav Light	62"
<b>Engines Available</b>	
	5.7 Mer
	570 Volvo DP
	7.4 Bravo



## 21BR CLASSIC

Deadrise	20"
Centerline	21'1"
Beam	8'0"
Draft (Drive up)	17"
Freeboard FWD	38"
Freeboard AFT	35"
Transom Height	42"
Weight Dry	3600
Fuel Capacity	60 Gal.
Water Capacity	0
Bridge Clearance w/o Nav Light	60"
<b>Engines Available</b>	
	5.7 Mer
	570 Volvo DP
	7.4 Mer



## 206 CONDURRE

Deadrise	22"
Centerline	20'6 1/2"
Beam	8'2 1/2"
Draft (Drive up)	18"
Freeboard FWD	36"
Freeboard AFT	21"
Transom Height	44"
Weight Dry	2700
Fuel Capacity	45 Gal.
Water Capacity	0 Gal.
Bridge Clearance w/o Nav Light	54"
<b>Engines Available</b>	
	4.3 Mer
	4.3 LX Mer
	5.0 Mer
	5.7 Mer
	570 Volvo DP



## 222 CONDURRE

Deadrise	20"
Centerline	22'3"
Beam	8'5"
Draft (Drive up)	17"
Freeboard FWD	34 1/2"
Freeboard AFT	21"
Transom Height	43"
Weight Dry	3400
Fuel Capacity	60 Gal.
Water Capacity	0 Gal.
Bridge Clearance w/o Nav Light	54"
<b>Engines Available</b>	
	5.7 Mer
	570 Volvo
	7.4 Bravo Mer
	740 Volvo DP
	454 Mag Bravo Mer



## 223 CONDURRE

Deadrise	20"
Centerline	22'3"
Beam	8'5"
Draft (Drive up)	17"
Freeboard FWD	34 1/2"
Freeboard AFT	21"
Transom Height	43"
Weight Dry	3400
Fuel Capacity	60 Gal.
Water Capacity	0 Gal.
Bridge Clearance w/o Nav Light	54"
<b>Engines Available</b>	
	5.7 Mer
	570 Volvo
	7.4 Bravo Mer
	740 Volvo DP
	454 Mag Bravo Mer



## 243 CONDURRE

Deadrise	20"
Centerline	23'10"
Beam	8'0"
Draft (Drive up)	20"
Freeboard FWD	38"
Freeboard AFT	24"
Transom Height	48"
Weight Dry	4100
Fuel Capacity	90 Gal.
Water Capacity	2 1/2 Gal.
Bridge Clearance w/o Nav Light	64"
<b>Engines Available</b>	
	5.7 Mer
	570 Volvo
	7.4 Bravo Mer
	740 Volvo DP
	454 Mag Bravo Mer



## 252 CONDURRE

Deadrise	17"
Centerline	25'2"
Beam	8'6"
Draft (Drive up)	20"
Freeboard FWD	40 1/2"
Freeboard AFT	25"
Transom Height	49"
Weight Dry	4300
Fuel Capacity	90 Gal.
Water Capacity	0 Gal.
Bridge Clearance w/o Nav Light	60"
<b>Engines Available</b>	
	5.7 Mer
	570 Volvo
	7.4 Bravo Mer
	740 Volvo DP
	454 Mag Bravo Mer



## 253 CONDURRE

Deadrise	17"
Centerline	25'2"
Beam	8'6"
Draft (Drive up)	20"
Freeboard FWD	40 1/2"
Freeboard AFT	25"
Transom Height	49"
Weight Dry	4300
Fuel Capacity	90 Gal.
Water Capacity	2 1/2 Gal.
Bridge Clearance w/o Nav Light	60"
<b>Engines Available</b>	
	5.7 Mer
	570 Volvo
	7.4 Bravo Mer
	740 Volvo DP
	454 Mag Bravo Mer



## 255 CONDURRE

Deadrise	17"
Centerline	25'2"
Beam	8'6"
Draft (Drive up)	20"
Freeboard FWD	44"
Freeboard AFT	27"
Transom Height	51 1/2"
Weight Dry	4900
Fuel Capacity	83 Gal.
Water Capacity	20 Gal.
Bridge Clearance w/o Nav Light	66"
<b>Engines Available</b>	
	5.7 Mer
	570 Volvo
	7.4 Bravo Mer
	740 Volvo DP
	454 Mag Bravo Mer



## 263 CONDURRE

Deadrise	17"
Centerline	26'3"
Beam	9'5"
Draft (Drive up)	23"
Freeboard FWD	52"
Freeboard AFT	36"
Transom Height	59 1/4"
Weight Dry	6100
Fuel Capacity	100 Gal.
Water Capacity	30 Gal.
Bridge Clearance w/o Nav Light	79"
<b>Engines Available</b>	
	Twin
	5.7 Mer
	570 Volvo DP
	4.3LX Mer
	7.4 Bravo Mer
	570 Volvo DP
	740 Volvo DP
	454 Mag Bravo Mer



## OPTIONAL CANVAS TOPS AND COVERS

Cobalt tops, camper tops, etc., are manufactured using Sunbrella™, a 100% acrylic woven marine fabric.



Bow tonneau/standard top



Camper top (available most models)



Bimini top  
(Avail. some models)



Stern curtain/std. top/bow tonneau



Cockpit tonneau cover



Mooring cover (243 shown) made of 100% cotton marine canvas

AUTHORIZED COBALT DEALER

© 1991 COBALT BOATS, 1101 ILLINOIS, NEODESHA, KANSAS 66757 USA



**COBALT BOATS**

**1 9 9 1**

There are boats. Then there are new expressions of boating style and engineering excellence such as you'll find in the 1991 Cobalts. This year's line of Cobalts preserves a tradition of quality, solid design and lasting value . . . And only Cobalt offers so many unique standard features . . . Creative, functional features you've come to expect from its makers.



**Complete Instrumentation  
Glare Resistant Control Center**



**Spacious Bow Area (222 pictured)**



**Lockable Hanging  
Locker (252 pictured)**



**Convertible Bolster Bucket**



**Floor Ski Storage  
(Bow Riders & 21CC)**



**Bow Area Headphone Jacks  
(222 & 252)**



**Integral Swim Platform (Condúres)**



**Fender Storage  
(222 & 252)**



**Anchor Storage Locker  
(252 pictured)**



**One Piece Fiberglass Engine  
Access (222 pictured)**



**Bow Scuff Plate (All models)**



## An Impressive Collection for '91

The 1991 line of Cobalt Boats typifies their 20 year reputation for achieving owner pride and satisfaction . . . exciting Euro styling, unique new comfort and convenience features coupled with engineered dependability and superb performance make the '91 models the best ever.



### 206 CONDURRE

Center Line 20'6 1/4"  
Beam 8'2 1/2"  
Draft (Drive up) 18"  
Freeboard FWD 36"  
Freeboard AFT 21"  
Transom Height 44"  
Weight Dry 2700  
Fuel Capacity 45 Gal.  
Water Capacity 0  
Bridge Clearance w/o Nav Light 54"  
**Engines Available**  
175 V-8 Mer  
205 V-8 Mer  
200 V-8 Mer  
260 V-8 Mer  
570 Volvo DP



### 252 CONDURRE

Center Line 25'2"  
Beam 8'6"  
Draft (Drive up) 20"  
Freeboard FWD 40 1/2"  
Freeboard AFT 25"  
Transom Height 49"  
Weight Dry 4300  
Fuel Capacity 90 Gal.  
Water Capacity 0  
Bridge Clearance w/o Nav Light 60"  
**Engines Available**  
5.7 Mer  
570 Volvo DP  
7.4 Bravo Mer  
740 Volvo DP  
454 Mag Bravo Mer



### 222 CONDURRE

Center Line 22'3"  
Beam 8'5"  
Draft (Drive up) 17"  
Freeboard FWD 34 1/2"  
Freeboard AFT 21"  
Transom Height 43"  
Weight Dry 3400  
Fuel Capacity 60 Gal.  
Water Capacity 0  
Bridge Clearance w/o Nav Light 54"  
**Engines Available**  
5.7 Mer  
570 Volvo DP  
7.4 Bravo Mer  
740 Volvo DP  
454 Mag Bravo Mer



### 253 CONDURRE

Center Line 25'2"  
Beam 8'6"  
Draft (Drive up) 20"  
Freeboard FWD 40 1/2"  
Freeboard AFT 25"  
Transom Height 49"  
Weight Dry 4300  
Fuel Capacity 90 Gal.  
Water Capacity 2 1/2 Gal.  
Bridge Clearance w/o Nav Light 60"  
**Engines Available**  
5.7 Mer  
570 Volvo DP  
7.4 Bravo Mer  
740 Volvo DP  
454 Mag Bravo Mer



### 223 CONDURRE

Center Line 22'3"  
Beam 8'5"  
Draft (Drive up) 17"  
Freeboard FWD 34 1/2"  
Freeboard AFT 21"  
Transom Height 43"  
Weight Dry 3400  
Fuel Capacity 60 Gal.  
Water Capacity 0  
Bridge Clearance w/o Nav Light 54"  
**Engines Available**  
5.7 Mer  
570 Volvo DP  
7.4 Bravo Mer  
740 Volvo DP  
454 Mag Bravo Mer



### 255 CONDURRE

Center Line 25'2"  
Beam 8'6"  
Draft (Drive up) 20"  
Freeboard FWD 44"  
Freeboard AFT 27"  
Transom Height 51 1/2"  
Weight Dry 4900  
Fuel Capacity 83 Gal.  
Water Capacity 20 Gal.  
Bridge Clearance w/o Nav Light 66"  
**Engines Available**  
5.7 Mer  
570 Volvo DP  
7.4 Bravo Mer  
740 Volvo DP  
454 Mag Bravo Mer



### 243 CONDURRE

Center Line 23'10"  
Beam 8'0"  
Draft (Drive up) 20"  
Freeboard FWD 38"  
Freeboard AFT 24"  
Transom Height 48"  
Weight Dry 6100  
Fuel Capacity 90 Gal.  
Water Capacity 2 1/2 Gal.  
Bridge Clearance w/o Nav Light 64"  
**Engines Available**  
5.7 Mer  
570 Volvo DP  
7.4 Bravo Mer  
740 Volvo DP  
454 Mag Bravo Mer



### 263 CONDURRE

Center Line 26'3"  
Beam 9'5"  
Draft (Drive up) 23"  
Freeboard FWD 52"  
Freeboard AFT 36"  
Transom Height 59 1/4"  
Weight Dry 6100  
Fuel Capacity 100 Gal.  
Water Capacity 30 Gal.  
Bridge Clearance w/o Nav Light 79"  
**Engines Available**  
5.7 Mer  
570 Volvo DP  
7.4 Bravo Mer  
740 Volvo DP  
454 Mag Bravo Mer



## COBALT STANDARD FEATURES

	206	21BR	21CC	222	223	243	252	253	255	263	
Adjustable Driver Seat											Large Engine Access
Convertible Top											Fresh Water Wash Down
Sundeck Interior											Lifting Rings
Bolster Bucket Driver Seat											All Aluminum Instrument Panel
Lay Down Seat											Double Side Wall Hull Construction
Stereo System											Stainless Steel Hardware and Rails
Curved Glass Windshield											Five Year Powertrain Warranty
Walk Thru Doors											Bow Scuff Plate
Tinted Windshield											Anchor Storage Locker
Walk Thru Windshield											Carpeted Storage
Boarding Ladder											Hanging Locker(s)
Ice Chest											Hideaway Top Storage
Circuit Breakers											Ski Rope Storage
Color Matched VDO Instruments											Ski Storage
Galley w/Sink, Stove and Refrigerator											Bilge Blower
Gas Assist Ski Door											Automatic Bilge Pump
Gas Assist Motor Box											Dual Horns
Electric Motor Box											Fire Extinguisher
Integral Swim Platform											Glare Resistant Instrument Panel
Large Capacity Fuel Tank											Rudder Indicator
Pump Out Head											Ignition Safety Switch
Transom Door											Halon Fire Extinguisher
Refreshment Console											
Trash Receptacle											
Hour Meter											
In-Dash Depth Sounder											
Leather Wrapped Steering Wheel											
Fender Storage											
Jim Wynne Hull Design											
Performance Matched Power Combinations											
Power Steering											
Power Trim											

Specifications subject to change without notice.

YOUR COBALT DEALER

COBALT® BOATS

1101 Illinois, P.O. Box 29, Neodesha, KS 66757

© Copyright, Cobalt Boats 1990 • Printed in U.S.A.