A scenic view of a cable-stayed bridge at sunset. The bridge's cables and towers are illuminated with warm lights, and the sky transitions from a deep blue to a bright orange near the horizon. In the foreground, a speedboat is moving across the water, leaving a white wake. The overall atmosphere is serene and majestic.

Because nowhere in your life  
do you accept mediocrity.



COBALT BOATS 2013 BENCHMARK COLLECTION



# Table of Contents

## Introduction

---

Cobalt Boats. . . . .	Pg. 3
Construction. . . . .	Pg. 5
Hydro-Lam System. . . . .	Pg. 8

## 10 Series

---

Model 200 . . . . .	Pg. 9
Model 210 . . . . .	Pg. 14
Model 220 . . . . .	Pg. 19

## BR Series

---

Model 232 . . . . .	Pg. 24
Model 242 . . . . .	Pg. 29
Model R5 . . . . .	Pg. 34
Model 262 . . . . .	Pg. 39
Model 276 . . . . .	Pg. 44
Model 296 . . . . .	Pg. 49
Model 302 . . . . .	Pg. 54
Model 336 . . . . .	Pg. 59

## A Series

---

Model A25 . . . . .	Pg. 64
Model A28 . . . . .	Pg. 70

## 3 Series

---

Model 243 . . . . .	Pg. 76
Model 273 . . . . .	Pg. 81
Model 323 . . . . .	Pg. 87

## SD Series

---

Model 24SD . . . . .	Pg. 93
Model 26SD . . . . .	Pg. 98

## Water Sports Series

---

WSS Models. . . . .	Pg. 103
---------------------	---------

## By Design

---

Warranty . . . . .	Pg. 11,
Color and Graphic Selections. . . . .	Pg. 11-
Canvas Options . . . . .	Pg. 11.
Optional Equipment. . . . .	Pg. 11/
Cobalt Sports . . . . .	Pg. 111

## COBALT BOATS, LLC

1715 N 8TH ST • NEODESHA, KS 66757  
PH 800-468-5764 • WWW.COALTBOTS.COM

© Copyright 2012-2013, all rights reserved.

Consult your Cobalt dealer as equipment and specifications are subject to change without notice.



## COBALT BOATS

Cobalt makes boat after boat so perfectly suited to its owners that, once aboard, there is no place in the world they'd rather be. Here are boats for people who have worked hard, who have accomplished, who are now ready to enjoy to the fullest the success that their efforts have brought them.

So welcome aboard, achievers, in your thoughtful appreciation of timeless good taste and inspired functionality. You remember that Cobalt means interiors that anticipate your needs for space and its comfortable usage at cruise and at anchor alike. You expect electronic entertainment systems that turn coves into concert halls. You understand Cobalt ease and accommodation and accessibility and comfort and safety astern, where so many of your truly storied festivities take place, with Cobalt innovation so sweeping that patents are called for.

The technicalities: honeycomb composite construction; completely hand-laid hulls, reinforced with essentially indestructible Kevlar®; a proprietary barrier coat for improved cosmetics and blister resistance; taller hull sides for a stable, dry ride in rough water; over-sized, over-strong, stainless-steel hardware; cushioned lids with knuckled hinges for easy, open access to storage compartments large and larger still; graphics deep, untouched in the gelcoat. Herewith, the ingredients of thoroughly enjoyable use of a boat for the generations.

You know that the little details of a boat's construction do their work quietly, contributing to big enjoyment when no one but you need notice the integrated bow eye with scuff plate, the stainless-steel ski tow, the structural genius of the bimini top, the quick-release fender system, the flip-lip seat bolster at the helm, or the dozens of Cobalt firsts which serve as a beacon for an entire industry.



## COBALT BOATS

Cobalt is approaching fifty years of building boats in the classic tradition. 50 years of excellence. 50 years of creating quality. For 5 decades we passionately pursue quality as not just a sometimes thing, we know it as an everyday thing. We're not interested in mass producing; we are boat and dream builders. It's a subtle play on words, but a major differentiation. It defines the difference between acceptable and excellence. Machines can produce. They can produce just fine. But only a knowledgeable, caring, engaged human being can build: there the throwback, there the wisdom which is so instilled in our team. At Cobalt we understand that opportunities for fundamental changes of attitude are pretty much what you make of them. And so, we've built boats that speak to the heart of things, boats capable of producing sounds not entirely meant to be heard: the escaping ooohs and inescapable wows of sudden movement. A Cobalt coming quickly on plane can lead to a welcome, unasked amnesia, the cares of a workaday world gone in a nanosecond of spray, land-locked worries forgotten in the laughing thump to the chest that defines Cobalt performance.



The beguiling begins in the basics, in fundamentals of design and construction that have defined Cobalt for almost fifty years, these boats the product of ever-changing technical innovation and unchanging allegiance to the personal integrity of our boat-builders, their individual craftsmanship, their day-to-day decisions about when a boat is good enough to be a Cobalt.



So we persist in the daily pursuit of the unreachable -- the design, manufacture, and ongoing support of the perfect runabout, the ideal performance cruiser. With our dealers worldwide, we give our minds and hearts to the winning of the hearts and minds of our customers, creating time and again a trust that feels just like family.



## Finely Detailed Interiors

- Vara-Dense Seat Construction
- Double-Needle Interior Details
- 32oz. Vinyl with Protective Barrier Coat
- Multiple Densities of Antimicrobial Foam
- StarBoard/Kelron Wood-Free Seat Bases
- Double-Knuckle Hinges
- Flip-Lip Seat Bolster
- Multi-Position Convertible Seat Backs

## Interior Versatility and Comfort

- Easily Convertible
- Ergonomic Comfort
- High Freeboard
- Deep Bow and Cockpit Seating
- 40 oz. Snap In/Out Carpet with Action Backing
- Exacting fit and seal of motorbox for the quietest cockpit

## Luxury is Not Made of Plastic

- Aluminum Dash Panel
- Solid Fiberglass Helm Station
- Digital Instrumentation
- GPS Offering on All Models
- Stainless Ignition Switch
- Stainless Steel Switches
- Circuit Breaker Protection
- Dual Grounding Busses
- Waterproof Electrical Connectors



Waterproof Sealed Connectors



Illuminated Switch Panels



Double-Needle Stitching



Engine Hatch Seal for a Quiet Ride



Wood-Free Seat Construction

## Real World Solutions (a.k.a. Industry Firsts)

- Quick-Release Fender Clips
- Stainless Steel Turn-Buckle Bimini Stanchions
- Stainless Steel Bow Scuff Plates
- Stainless Steel Windshield Door Latch
- Flush Mount Removable Ski Tow
- 

## The Cobalt Swim Platform

- Easy Entry/Exit Water Access
- Protection From the Propeller
- Stainless Steel Bumper Rail
- Cobalt Exclusive Flip-Down Swim Step
- A-Series Hydraulic Deployable Swim Platform



Turn-Buckle Bimini Stanchions



Stainless Steel Bow Scuff Plate



Quick-Release Fender Clips



Stainless Steel Windshield Latch



Cobalt Exclusive Swim Step



A Series Hydraulic Swim Platform

## Superior Construction

---

- Gelcoat Graphics
- Barrier Coat - A Cobalt Exclusive
- 100% Hand-Laid Hulls
- Buffback Gelcoat to Resist Fading
- Tapped Aluminum Backing Plates on All Hardware
- Composite Transom
- Nida-Core Floor Construction
- Fiberglass Stringer System
- Gas-Assist Struts on All Hatch Covers
- Extensive Electropolished Stainless Steel Hardware
- Kevlar Reinforced Hull Construction

## Hulls Designed for Smooth and Soft Ride

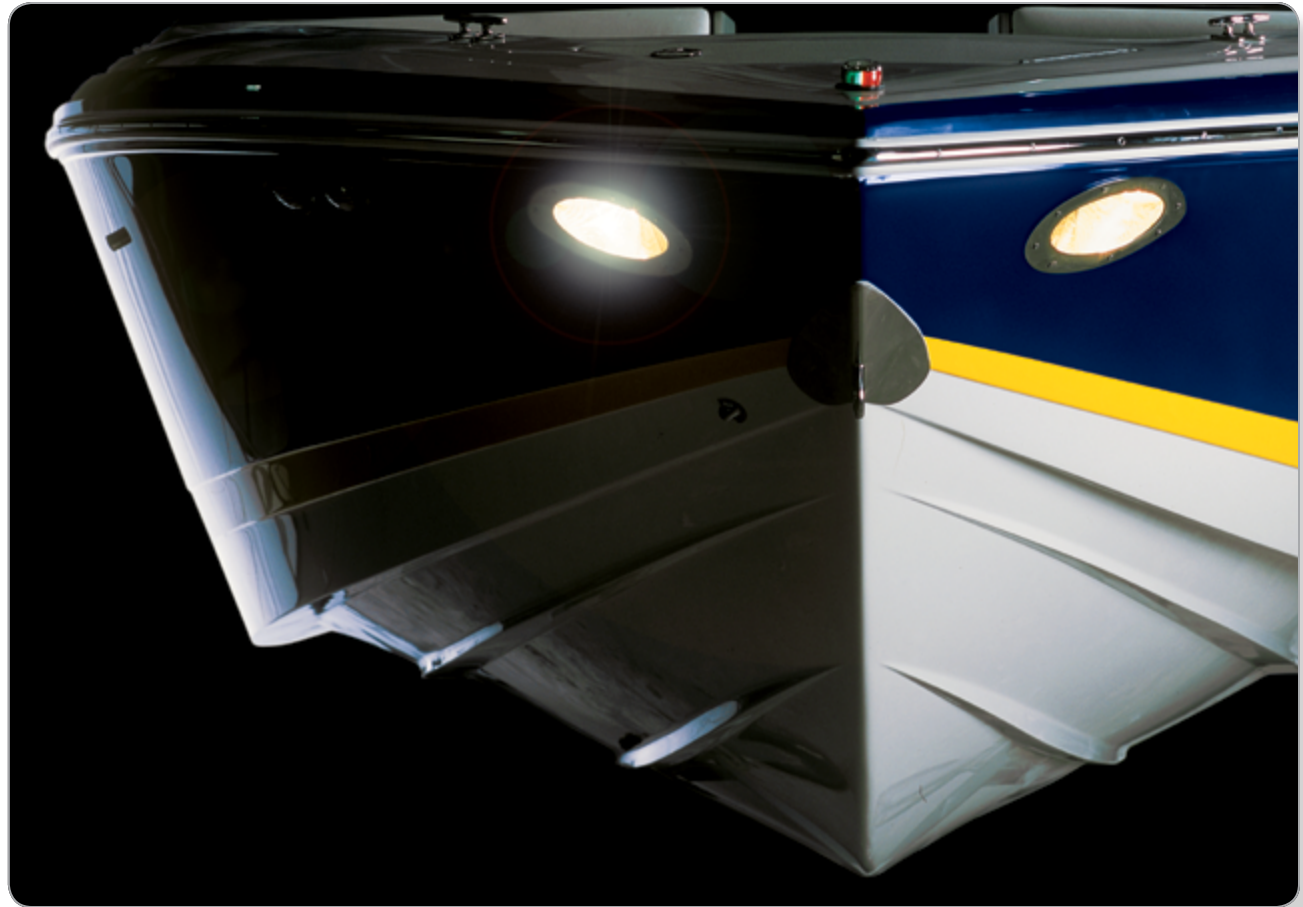
---

- Progressive Deadrise Hull Design
- Smooth, Dry, Award Winning Ride
- Extended Running Surface
- Reverse Chines for Ultimate Control

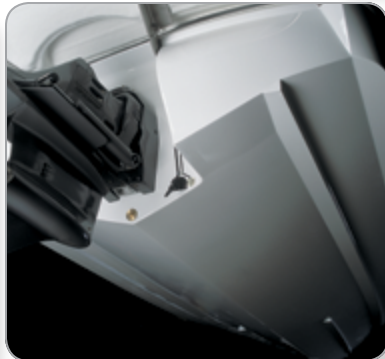
## Unrivaled Handling

---

- Quick On-Plane with Minimal Bow Rise
- Stay On-Plane at Low Speed
- Cornering "On Rails"
- High Speed Stability



Electropolished Advantages



Extended Running Surface



Composite Floor Construction



Bonded Fiberglass Stringers

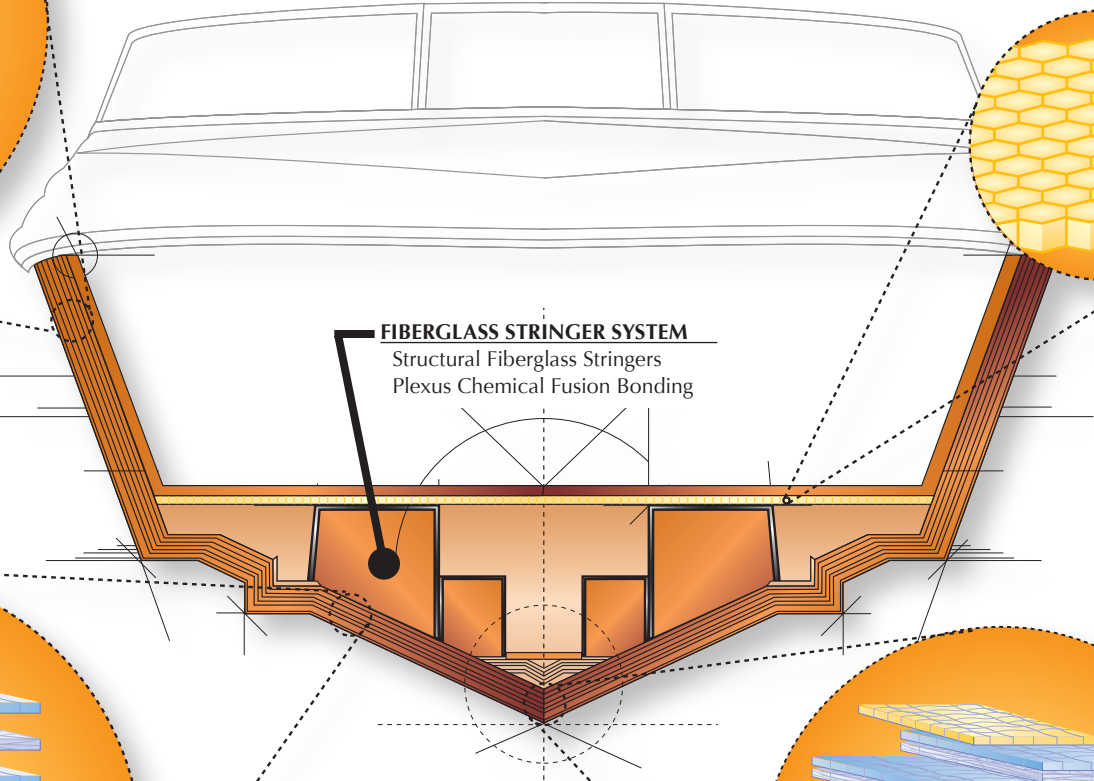
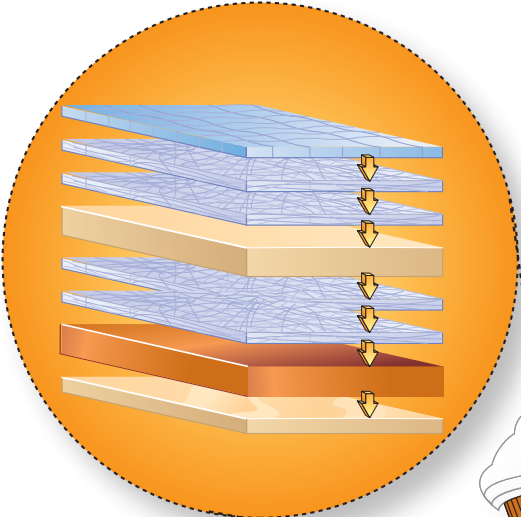


Kevlar Reinforced Hull

# The Cobalt Hydro-Lam System

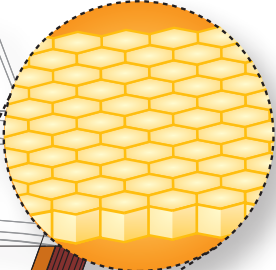


**HULL SIDE**  
 3 Layers of Hand-Laid Fiberglass  
 Spray-Core Composite  
 2 layers of Hand-Laid Fiberglass  
 Z-Thane Barrier Coat  
 Gelcoat

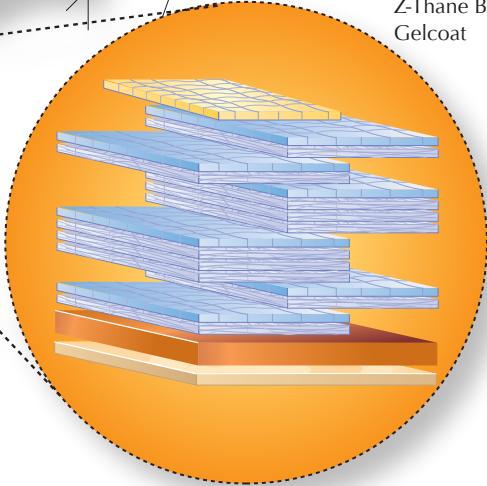


**FIBERGLASS STRINGER SYSTEM**  
 Structural Fiberglass Stringers  
 Plexus Chemical Fusion Bonding

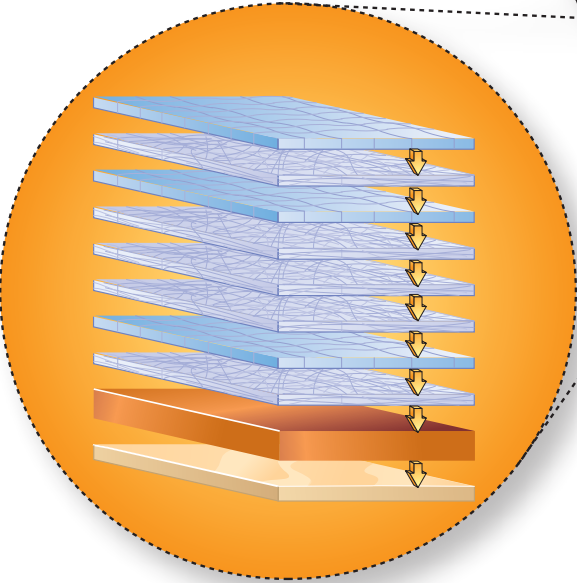
**FLOOR CONSTRUCTION**  
 Non-Skid Gelcoat  
 Fiberglass Layering  
 Spray-Core Composite  
 Fiberglass Encased Honeycomb Coring



**HULL KEEL**  
 Kevlar Reinforcement  
 16 Layers of Hand-Laid Fiberglass  
 Z-Thane Barrier Coat  
 Gelcoat



**HULL BOTTOM**  
 8 Layers of Hand-Laid Fiberglass  
 Z-Thane Barrier Coat  
 Gelcoat





200

COBALT BOATS

10 SERIES

## COBALT 200



The 200 will show you nuances of design and construction, instances of effortless performance once thought possible only in far larger boats. You've waited long enough.

The 200 throbs hearts with a V-6 engine, jumps on plane, hangs true and tight in the turns, does so handily, while creating surprising fuel efficiencies. Cobalt utilizes Free Space Reclamation (FSR) to maximize interior space in the cockpit, and free space it becomes when you are out on the water with friends and family. With walk-about, lay-about, stow-away spaciousness at every turn, the 200 creates its own sort of convenience, comfort, and simple luxury, from the standard digital instrumentation to the wraparound bow to the 89" wide cockpit with the port chaise lounge, the 200 adapts at a touch from tanning salon to a safe, secure seating environment.

The 200 goes down to the sea trailerable, in strength, with dashing style. The sculpted hull speaks for itself, while the long, purposeful lines sweep and flow to catch a perfect light, the 200's a profile classic in every subtle detail. Take the 200 home. And someday comes today.





# 200

10 SERIES



## COBALT 200



### Specifications

Length Overall w/o Swim Platform	19' 4"	5.89 m
Length Overall w/ Swim Platform	20' 10"	6.35 m
Beam	8' 4"	2.54 m
Deadrise at Transom	20°	20°
Fuel Capacity	40 gal.	151 L
Bridge Clearance w/o Bimini	3' 11"	1.19 m
Bridge Clearance w/Tower	6' 10"	2.08 m
Draft Drive Up	24"	.61 m
Draft Drive Down	37"	.94 m
Dry Weight	3500 lbs.	1588 kg
Boat Certified Capacity	11 persons	11 persons
Boat Certified Capacity w/gear	1515 lbs.	687 kg



Water Sports Series Compatible

### MerCruiser Sterndrive Power

4.3 L MPI ECT Alpha	220 php	164 PkW
4.3 L MPI ECT B3	220 php	164 PkW
4.3 L MPI Alpha (non-cat)	220 php	164 PkW
4.3 L MPI B3 (non-cat)	220 php	164 PkW
5.0 L MPI ECT Alpha	260 php	194 PkW
5.0 L MPI ECT B3	260 php	194 PkW
350 Mag MPI ECT B3	300 php	224 PkW

### Volvo Penta Sterndrive Power

V6-225 DP (non-cat)	225 php	168 PkW
V6-225 SX (non-cat)	225 php	168 PkW
V8-225C SX	225 php	168 PkW
V8-225C DP	225 php	168 PkW
V8-270C DP	270 php	201 PkW
V8-270C SX	270 php	201 PkW
V8-300C DP	300 php	224 PkW

### Engine Options

- Anti-Corrosion System
- DTS (Merc)
- EVC (Volvo)
- Ocean-X (Volvo)
- Seacore (Merc)

# COBALT 200



## STANDARD EQUIPMENT

### Dash and Instrumentation

Accessory Power Plug - 12 Volt  
Aluminum Dash Panels  
Composite Helm Eyebrow,  
Custom Stitching  
Hour Meter  
Leather Steering Wheel w/  
Auto Leveling Hub  
Stainless Steel Switches

### Stereo

AM-FM, Single CD Stereo w/6 Speakers  
Ipod/MP3 Port  
Stereo Remote, Dash

### Exterior

Anchor Locker  
Bow Scuff Plate, Stainless Steel  
Extended Running Surface  
Graphics, Molded-In Gelcoat  
Midship Cleats  
Ski Tow Eye, Stainless Steel  
SS Tubular Platform Perimeter Rail  
Stainless Top Trim Windshield  
Swim Platform, Extended w/Ladder

### Interior

Aft Sunpad w/Walk-Thru Transom  
Bow Walk-Thru Door  
Carpet, 40 oz., Snap-In w/Neoprene Back  
Removable Bow & Cockpit Carpet  
Removable Ice Chest  
Seating Varadense Comfort  
Seating, Helm Flip-Up

### Structure / Safety / Performance

10/5/3 Year Warranty Protection  
Battery Switch, Single  
Circuit Breaker Protected Elec System  
Composite Floor  
Composite Seat Bases  
Composite Transom  
Fiberglass Cockpit Liner  
Fiberglass Stringer System  
Fire Extinguisher, Manual  
Ignition Safety Switch  
Kevlar Reinforced Hull  
Stainless Steel Windshield Braces  
Through Prop Exhaust

## OPTIONAL EQUIPMENT

### Canvas

Bimini Top w/SS Adj. Stanchions  
Bow Tonneau Cover  
Cockpit Tonneau Cover  
Mooring Cover

### Dash and Instrumentation

Compass  
Depth & Water/Air Temp Gauge Pkg.  
GPS w/Weather, Garmin 640, w/maps  
GPS, Garmin 640, w/maps  
Wood Dash/Trim Pkg., Oil Rubbed

### Stereo

Premium Sound w/Transom Remote  
Premium Sound w/Transom  
Remote & Speakers  
Satellite Radio System  
Speakers (1 pr), Alum Arch  
Stereo Remote, Transom

### Exterior

COBALT Oval Logo, Recessed  
Arch, Aluminum, Fwd. Folding w/Bimini  
Docking Lights-Stainless Steel  
Fender Clips w/Line (4)  
Flagpole w/Flag  
Flip-Down Swim Step w/o Ladder  
Sof-Trac Mat (std swim platform)  
Sof-Trac Mat (swim platform w/step)  
Transom Tilt Switch  
Wakeboard Racks w/Swivel-2 (Arch)

### Interior

Aft Sunpad w/Adjustable Backrest  
Aft Walk-Thru Carpet  
Aft Walk-Thru Filler Cushions  
Aft Walk-Thru Gate  
Air Compressor w/Holder  
Bow Center Cushion Insert  
Carpet, Cesara (Sand & Terra)  
Dinette Table w/cockpit receptacle  
Floor Covering, Sea Grass (Sand & Terra)  
Remote Courtesy Lights w/key fob

## Structure / Safety / Performance

Battery Switch, Dual w/VSR  
Battery Tender/Charger, 110v  
Battery Tender/Charger, 220v  
CE Requirements w/Auto Fire Extinguisher  
Cruise Control (Perfect Pass) w/GPS  
Fire Extinguisher, Automatic System  
Tool Kit



210

COBALT BOATS

10SERIES

## COBALT 242



Your initial responses to the 210 will be confirmed across years of exhilarating performance and dependable enjoyment.

Thank Cobalt engineers for a design that delivers one of the broadest cockpit widths in the marine industry, creating a stability of dry ride, a spread-out-and-relax roominess that surrounds you and your guests with the handcraftsmanship, the unmistakable fit and finish of interior spaces arising from classic Mediterranean notions of use and beauty. The 210 means big fun – explosive hole-shots, easy and extended zooming, the tight high-speed turns skiers and boarders want – while affording you some remarkable efficiencies in fuel management. The swim platform shows off aft of a true walk-thru at the transom, there to make boarding, from the dock or from a late-day swim, a graceful affair for the ten-plus friends who might, now and then, get to come along.

The 210 will steal your heart away from the moment you lay a lingering eye on her. See you later, smitten.





# 210



10 SERIES

## COBALT 210



### SPECIFICATIONS

Length Overall w/o Swim Platform	20' 4"	6.20 m
Length Overall w/ Swim Platform	22' 5"	6.83 m
Beam	8' 6"	2.59 m
Interior Cockpit Width	89"	2.26 m
Deadrise at Transom	20°	20°
Fuel Capacity	40 gal.	151 L
Freshwater Capacity	10 gal.	38 L
Bridge Clearance w/o Bimini	4' 0"	1.22 m
Bridge Clearance w/Arch or Tower	7' 7"	2.31 m
Draft Drive Up	24"	.61 m
Draft Drive Down	36"	.92 m
Dry Weight	3850 lbs.	1746 kg
Boat Certified Capacity	12 persons	12 persons
Boat Certified Capacity w/gear	1650 lbs.	748 kg

**WSS**

Water Sports Series Compatible

### MERCUISER STERNDRIVE POWER

4.3 L MPI ECT Alpha	220 php	164 PkW
4.3 L MPI ECT B3	220 php	164 PkW
4.3 L MPI Alpha (non-cat)	220 php	164 PkW
4.3 L MPI B3 (non-cat)	220 php	164 PkW
5.0 L MPI ECT Alpha	260 php	194 PkW
5.0 L MPI ECT B3	260 php	194 PkW
350 Mag MPI ECT B3	300 php	224 PkW

### VOLVO PENTA STERNDRIVE POWER

V8-225C SX	225 php	168 PkW
V6-225 SX (non-cat)	225 php	168 PkW
V6-225 DP (non-cat)	225 php	168 PkW
V8-225C DP	225 php	168 PkW
V8-270C DP	270 php	201 PkW
V8-270C SX	270 php	201 PkW
V8-300C DP	300 php	224 PkW

### ENGINE OPTIONS

Anti-Corrosion System  
 DTS (Merc)  
 EVC (Volvo)  
 Ocean-X (Volvo)  
 Seacore (Merc)



## STANDARD EQUIPMENT

### Dash and Instrumentation

- Accessory Power Plug - 12 Volt
- Aluminum Dash Panels
- Composite Helm Eyebrow,
- Custom Stitching
- Depth & Water/Air Temp Gauge Pkg.
- Hour Meter
- Leather Steering Wheel w/
- Auto Leveling Hub
- Stainless Steel Switches

### Stereo

- AM-FM, Single CD Stereo w/6 Speakers
- iPod/MP3 Port
- Stereo Remote, Dash

### Exterior

- Anchor Locker
- Bow Scuff Plate, Stainless Steel
- Extended Running Surface
- Graphics, Molded-In Gelcoat
- Midship Cleats
- Ski Tow Eye, Stainless Steel
- SS Tubular Platform Perimeter Rail
- Stainless Steel Engine Vents
- Stainless Top Trim Windshield
- Swim Platform, Extended w/Ladder

### Interior

- Aft Sunpad w/Walk-Thru Transom
- Bow Walk-Thru Doors
- Carpet, 40 oz., Snap-In w/Neoprene Back
- Removable Bow & Cockpit Carpet
- Seating Varadense Comfort
- Seating, Dual Flip-Lip Buckets

### Structure / Safety / Performance

- 10/5/3 Year Warranty Protection
- Battery Switch, Single
- Circuit Breaker Protected Elec System
- Composite Floor
- Composite Transom
- Fiberglass Cockpit Liner
- Fiberglass Stringer System
- Fire Extinguisher, Manual
- Ignition Safety Switch
- Kevlar Reinforced Hull
- Stainless Steel Windshield Braces
- Through Prop Exhaust

## OPTIONAL EQUIPMENT

### Canvas

- Bimini Top
- Bow Tonneau Cover
- Cockpit Tonneau Cover
- Mooring Cover

### Dash and Instrumentation

- GPS w/Weather, Garmin 640, w/maps
- GPS, Garmin 640, w/maps
- Wood Dash/Trim Pkg., Oil Rubbed

### Stereo

- Premium Sound w/Transom Remote
- Satellite Radio System
- Speakers (1 pr), Arch & Tower
- Stereo Remote, Transom

### Exterior

- COBALT Oval Logo, Recessed
- Arch, Aluminum, Fwd. Folding w/Bimini
- Docking Lights-Stainless Steel
- Fender Clips w/Line (4)
- Flagpole w/Flag
- Flip-Down Swim Step w/Ladder
- Flip-Down Swim Step w/o Ladder
- Sof-Trac Mat (std swim platform)
- Sof-Trac Mat (swim platform w/step)
- Stainless Steel Tower w/Bimini Top
- Stainless Steel Tower w/Sunshade
- Swim Platform Transom Lighting
- Transom Shower
- Transom Tilt Switch
- Wakeboard Racks w/
- Swivel-2 (Arch/Tower)

### Interior

- Aft Walk-Thru Carpet
- Aft Walk-Thru Filler Cushions
- Air Compressor w/Holder
- Bow Center Cushion Insert
- Carpet, Cesara (Sand & Terra)
- Dinette Table w/cockpit receptacle
- Floor Covering, Sea Grass (Sand & Terra)
- Remote Courtesy Lights w/key fob
- Stainless Steel Foot Tread (helm only)

## Structure / Safety / Performance

- Battery Switch, Dual w/VSR
- Battery Tender/Charger, 110v
- Battery Tender/Charger, 220v
- Captain's Call Exhaust
- Captain's Call Plus (w/Mufflers)
- CE Requirements w/Auto Fire Extinguisher
- Cruise Control (Perfect Pass) w/GPS
- Fire Extinguisher, Automatic System
- Tool Kit



220

COBALT BOATS

10 SERIES

## COBALT 220



The details of a great boat accumulate in ways that you may never notice. But feel free to imagine.

Come aboard the 220, and know comfort and convenience typically found only in far larger boats. Experience a spaciousness that maximizes flexibility in your use of the boat, thanks to Free Space Reclamation (FSR), Cobalt's studied minimization of heretofore unused space. The 220 makes idealized use of every square inch of its wide and sturdy stance, the stadium seating key to the easy accommodation of a dozen guests and their gear. And the swim step, of course, Cobalt's game-changing, patented contribution to safety, convenience, and accessibility makes boarding a breeze. Memories gather naturally under the 220's aluminum wakeboard arch – simply foldable, by the way – an addition that makes your boat as athletic as it is roomy. You decide exactly how the heart-thumps should occur, on board or otherwise.

Then curl up. And remember.





# 220

10 SERIES



## COBALT 220



### SPECIFICATIONS

Length Overall w/o Swim Platform	21' 4"	6.50 m
Length Overall w/ Swim Platform	22' 10"	6.96 m
Beam	8' 6"	2.59 m
Deadrise at Transom	20°	20°
Fuel Capacity	50 gal.	189 L
Bridge Clearance w/o Bimini	3' 11"	1.19 m
Bridge Clearance w/Tower	6' 10"	2.08 m
Draft Drive Up	24"	.61 m
Draft Drive Down	37"	.94 m
Dry Weight	3700 lbs.	1678 kg
Boat Certified Capacity	12 persons	12 persons
Boat Certified Capacity w/gear	1695 lbs.	768 kg

**WSS**

Water Sports Series Compatible

### MERCUISER STERNDRIVE POWER

4.3 L MPI ECT Alpha	220 php	164 PkW
4.3 L MPI ECT B3	220 php	164 PkW
4.3 L MPI Alpha (non-cat)	220 php	164 PkW
4.3 L MPI B3 (non-cat)	220 php	164 PkW
5.0 L MPI ECT Alpha	260 php	194 PkW
5.0 L MPI ECT B3	260 php	194 PkW
350 Mag MPI ECT B3	300 php	224 PkW
377 Mag MPI ECT B3	300 php	224 PkW

### VOLVO PENTA STERNDRIVE POWER

V6-225 DP (non-cat)	225 php	168 PkW
V6-225 SX (non-cat)	225 php	168 PkW
V6-225C SX	225 php	168 PkW
V6-225C DP	225 php	168 PkW
V8-270C DP	270 php	201 PkW
V8-270C SX	270 php	201 PkW
V8-300C DP	300 php	224 PkW
V8-320C DP	320 php	239 PkW

### ENGINE OPTIONS

Anti-Corrosion System  
 DTS (Merc)  
 EVC (Volvo)  
 Ocean-X (Volvo)  
 Seacore (Merc)

# COBALT 220



## STANDARD EQUIPMENT

### Dash and Instrumentation

- Accessory Power Plug - 12 Volt
- Aluminum Dash Panels
- Composite Helm Eyebrow,
- Custom Stitching
- Hour Meter
- Leather Steering Wheel w/
- Auto Leveling Hub
- Stainless Steel Switches

### Stereo

- AM-FM, Single CD Stereo w/6 Speakers
- Ipod/MP3 Port
- Stereo Remote, Dash

### Exterior

- Anchor Locker
- Bow Scuff Plate, Stainless Steel
- Extended Running Surface
- Graphics, Molded-In Gelcoat
- Midship Cleats
- Ski Tow Eye, Stainless Steel
- SS Tubular Platform Perimeter Rail
- Stainless Top Trim Windshield
- Swim Platform, Extended w/Ladder

### Interior

- Aft Sunpad w/Walk-Thru Transom
- Bow Walk-Thru Door
- Carpet, 40 oz., Snap-In w/Neoprene Back
- Removable Bow & Cockpit Carpet
- Removable Ice Chest
- Seating Varadense Comfort
- Seating, Helm Flip-Up

### Structure / Safety / Performance

- 10/5/3 Year Warranty Protection
- Battery Switch, Single
- Circuit Breaker Protected Elec System
- Composite Floor
- Composite Seat Bases
- Composite Transom
- Fiberglass Cockpit Liner
- Fiberglass Stringer System
- Fire Extinguisher, Manual
- Ignition Safety Switch
- Kevlar Reinforced Hull
- Stainless Steel Windshield Braces
- Through Prop Exhaust

## OPTIONAL EQUIPMENT

### Canvas

- Bimini Top w/SS Adj. Stanchions
- Bow Tonneau Cover
- Cockpit Tonneau Cover
- Mooring Cover

### Dash and Instrumentation

- Compass
- Depth & Water/Air Temp Gauge Pkg.
- GPS w/Weather, Garmin 640, w/maps
- GPS, Garmin 640, w/maps
- Wood Dash/Trim Pkg., Oil Rubbed

### Stereo

- Premium Sound w/Transom Remote
- Premium Sound w/Transom
- Remote & Speakers
- Satellite Radio System
- Speakers (1 pr), Arch
- Stereo Remote, Transom

### Exterior

- COBALT Oval Logo, Recessed
- Arch, Aluminum, Fwd. Folding w/Bimini
- Docking Lights-Stainless Steel
- Fender Clips w/Line (4)
- Flagpole w/Flag
- Flip-Down Swim Step w/o Ladder
- Sof-Trac Mat (std swim platform)
- Sof-Trac Mat (swim platform w/step)
- Transom Tilt Switch
- Wakeboard Racks w/Swivel-2 (Arch)

### Interior

- Aft Sunpad w/Adjustable Backrest
- Aft Walk-Thru Carpet
- Aft Walk-Thru Filler Cushions
- Aft Walk-Thru Gate
- Air Compressor w/Holder
- Bow Center Cushion Insert
- Carpet, Cesara (Sand & Terra)
- Dinette Table w/cockpit receptacle
- Floor Covering, Sea Grass (Sand & Terra)
- Remote Courtesy Lights w/key fob

## Structure / Safety / Performance

- Battery Switch, Dual w/VSR
- Battery Tender/Charger, 110v
- Battery Tender/Charger, 220v
- CE Requirements w/Auto Fire Extinguisher
- Cruise Control (Perfect Pass) w/GPS
- Fire Extinguisher, Automatic System
- Tool Kit



232

COBALT BOATS

BR SERIES

## COBALT 232



The 232 is a boat for all seasons, for all occasions, for all the minutes that matter most. It promises to be, to do everything you want.

You remember the proverb. "The journey is the destination." Or vice versa?

If you're seeking an ideal combination of the spaciousness and luxurious comfort of a larger bowrider with the agility and easy control of a smaller Cobalt, the 232 becomes your boat of choice. It invites quiet conversation at cruise, such is the smoothness, the grace of its ride. It stows the materials of the good life in brilliantly concealed compartments bow to stern. It adapts to the activity of the moment, its seating adjustable, enjoyable in any configuration. It will charge hard to a luncheon waiting across the lake. It will settle in for easy embrace of a coming sunset with no particular place to go.

Other than right here. Right now. Right on, 232. Again.





# 232



**BR** SERIES

## COBALT 232



### SPECIFICATIONS

Length Overall w/o Swim Platform	22' 6"	6.86 m
Length Overall w/ Swim Platform	25' 1"	7.64 m
Beam	8' 6"	2.59 m
Interior Cockpit Width	89"	2.26
Deadrise at Transom	21°	21°
Fuel Capacity	50 gal.	189 L
Freshwater Capacity	10 gal.	38 L
Bridge Clearance w/o Bimini	4' 9"	1.45 m
Bridge Clearance w/Arch or Tower	7' 6"	2.29 m
Draft Drive Up	26"	.66 m
Draft Drive Down	36"	.91 m
Dry Weight	4165 lbs.	1886 kg
Boat Certified Capacity	12 persons	12 persons
Boat Certified Capacity w/gear	1800 lbs.	816 kg

**WSS**

Water Sports Series Compatible

### MERCUISER STERNDRIVE POWER

4.3 L MPI ECT Alpha	220 php	164 PkW
350 Mag MPI ECT B3	300 php	224 PkW
377 Mag MPI ECT B3	320 php	239 PkW
8.2 Mag ECT B3	380 php	283 PkW
8.2 Mag HO ECT B3	430 php	321 PkW

### VOLVO PENTA STERNDRIVE POWER

V8-300C DP	300 php	224 PkW
V8-320C DP	320 php	239 PkW
V8-380C DP	380 php	283 PkW

### ENGINE OPTIONS

Anti-Corrosion System  
 DTS (Merc)  
 EVC (Volvo)  
 Ocean-X (Volvo)  
 Seacore (Merc)



## STANDARD EQUIPMENT

### Dash and Instrumentation

- Accessory Power Plug - 12 Volt
- Aluminum Dash Panels
- Black Leather/SS Steering Wheel
- Composite Helm Eyebrow,
- Custom Stitching
- Depth & Water/Air Temp Gauge Pkg.
- Hour Meter
- Illuminated Switch Panel/Switches
- Stainless Steel Switches

### Stereo

- AM-FM, Single CD Stereo w/6 Speakers
- iPod/MP3 Port
- Stereo Remote, Dash

### Exterior

- Anchor Locker
- Bow Scuff Plate, Stainless Steel
- Extended Running Surface
- Graphics, Molded-In Gelcoat
- Midship Cleats
- Ski Pylon - Stainless Steel
- SS Tubular Platform Perimeter Rail
- Stainless Steel Engine Vents
- Stainless Top Trim Windshield
- Swim Platform, Extended w/Ladderr

### Interior

- Aft Sunpad w/Walk-Thru Transom
- Bow Walk-Thru Doors
- Carpet, 40 oz., Snap-In w/Neoprene Back
- Removable Bow & Cockpit Carpet
- Seating Varadense Comfort
- Seating, Dual Flip-Lip Buckets

### Structure / Safety / Performance

- 10/5/3 Year Warranty Protection
- Battery Switch, Single
- Circuit Breaker Protected Elec System
- Composite Floor
- Composite Transom
- Fiberglass Cockpit Liner
- Fiberglass Stringer System
- Fire Extinguisher, Manual
- Ignition Safety Switch
- Kevlar Reinforced Hull
- Stainless Steel Windshield Braces
- Through Prop Exhaust

## OPTIONAL EQUIPMENT

### Canvas

- Bimini Top
- Bow Tonneau Cover
- Cockpit Tonneau Cover
- Mooring Cover

### Dash and Instrumentation

- GPS w/Weather, Garmin 640, w/maps
- GPS, Garmin 640, w/maps
- Wood Dash/Trim Pkg., Oil Rubbed

### Stereo

- Premium Sound System w/
- Transom Remote
- Satellite Radio System
- Speakers (1 pr.), Tower/Arch
- Stereo Remote, Transom

### Exterior

- COBALT Oval Logo, Recessed
- Arch, Aluminum, Fwd. Folding w/Bimini
- Docking Lights-Stainless Steel
- Fender Clips w/Line (4)
- Flagpole w/Flag
- Flip-Down Swim Step w/Ladder
- Flip-Down Swim Step w/o Ladder
- Motorbox Actuator
- Sof-Trac Mat (std swim platform)
- Sof-Trac Mat (swim platform w/step)
- Stainless Steel Tower w/Bimini Top
- Stainless Steel Tower w/Sunshade
- Swim Platform Transom Lighting
- Transom Shower
- Transom Tilt Switch
- Underwater Lighting
- Wakeboard Racks w/Swivel
- (2) requires tower

### Interior

- Aft Walk-Thru Carpet
- Aft Walk-Thru Filler Cushion
- Air Compressor w/Holder
- Bow Center Cushion Insert
- Carpet, Cesera (Sand & Terra)
- Del Mart Sport Seating
- Dinette Table w/cockpit receptacle
- Floor Covering, Sea Grass (Sand & Terra)
- Remote Courtesy Lights w/key fob
- Stainless Steel Foot Tread (helm only)

## Structure / Safety / Performance

- Battery Switch, Dual w/VSR
- Battery Tender/Charger, 110v
- Battery Tender/Charger, 220v
- Captain's Call Exhaust
- Captain's Call Plus (w/Mufflers)
- CE Requirements w/Automatic
- Fire Extinguisher
- Cruise Control (Perfect Pass) w/GPS
- Fire Extinguisher, Automatic System
- Tool Kit
- Trim Tabs



242

COBALT BOATS

BR SERIES

## COBALT 242



The Cobalt 242 puts convenience and intelligent practicality at the service of perfect minutes hereabouts.

Genetics predispose, we suppose. In inborne attitudes that call for optimism, that support your sense of the possible. Much like your boat which, in the case of the Cobalt 242, means identifying characteristics almost fifty years in the making. Ride and performance and good looks that gather from all the expected Cobalt DNA. Look here at the wide bow walk-thru doors, the striking elegance of the cockpit, the immediate and absolute control at the helm, the wraparound welcome for three times today's guest list, the extended and now laddered swim platform with an optional lighting system, an evolutionary porta-potti, an aft sunpad with adjustable backrest. All the components of an ideal day on the water with not an inch of unused space.

Amid and all around the mirth of the moment, you'll in your 242 find a deep-down dependability. It's the Cobalt family way.





# 242



**BR**SERIES

## COBALT 242



### SPECIFICATIONS

Length Overall w/o Swim Platform	23' 11"	7.29 m
Length Overall w/ Swim Platform	25' 11"	7.90 m
Beam	8' 6"	2.59 m
Interior Cockpit Width	87"	2.20 m
Deadrise at Transom	21°	21°
Fuel Capacity	50 gal.	189 L
Freshwater Capacity	10 gal.	38 L
Bridge Clearance w/o Bimini	5' 3"	1.60 m
Bridge Clearance w/Arch or Tower	8' 2"	2.49 m
Draft Drive Up	21"	.53 m
Draft Drive Down	37"	.94 m
Dry Weight	4600 lbs.	2087 m
Boat Certified Capacity	13 persons	13 persons
Boat Certified Capacity w/gear	2250 lbs.	1021 kg

**WSS**

Water Sports Series Compatible

### MERCUISER STERNDRIVE POWER

350 Mag MPI ECT B3	300 php	224 PkW
377 Mag MPI ECT B3	320 php	239 PkW
8.2 Mag ECT B3	380 php	283 PkW
8.2 Mag HO ECT B3	430 php	321 PkW

### VOLVO PENTA STERNDRIVE POWER

V8-300C DP	300 php	224 PkW
V8-320C DP	320 php	239 PkW
V8-380C DP	380 php	283 PkW

### ENGINE OPTIONS

Anti-Corrosion System  
 DTS (Merc)  
 EVC (Volvo)  
 Ocean-X (Volvo)  
 Seacore (Merc)



## STANDARD EQUIPMENT

### Dash and Instrumentation

- Accessory Power Plug - 12 Volt
- Aluminum Dash Panels
- Black Leather/SS Steering Wheel
- Composite Helm Eyebrow,
- Custom Stitching
- Depth & Water/Air Temp Gauge Pkg.
- Hour Meter
- Illuminated Switch Panel/Switches
- Stainless Steel Switches

### Stereo

- AM-FM, Single CD Stereo w/6 Speakers
- iPod/MP3 Port
- Stereo Remote, Dash

### Exterior

- Anchor Locker
- Bow Scuff Plate, Stainless Steel
- Extended Running Surface
- Graphics, Molded-In Gelcoat
- Midship Cleats
- Ski Pylon - Stainless Steel
- SS Tubular Platform Perimeter Rail
- Stainless Steel Engine Vents
- Stainless Top Trim Windshield
- Swim Platform, Extended w/Ladder

### Interior

- Aft Sunpad w/Adjustable Backrest
- Bow Cushion Insert, Port & Stbd
- Bow Walk-Thru Doors
- Carpet, 40 oz., Snap-In, Neoprene Back
- Removable Bow & Cockpit Carpet
- Seating Varadense Comfort
- Seating, Dual Flip-Lip Buckets

### Structure / Safety / Performance

- 10/5/3 Year Warranty Protection
- Battery Switch, Single
- Circuit Breaker Protected Elec System
- Composite Floor
- Composite Transom
- Fiberglass Cockpit Liner
- Fiberglass Stringer System
- Fire Extinguisher, Manual
- Ignition Safety Switch
- Kevlar Reinforced Hull
- Stainless Steel Windshield Braces

## OPTIONAL EQUIPMENT

### Canvas

- Bimini Top
- Bow Tonneau Cover
- Cockpit Tonneau Cover
- Mooring Cover

### Dash and Instrumentation

- GPS w/Weather, Garmin 640, w/maps
- GPS, Garmin 640, w/maps
- Wood Dash/Trim Pkg., Oil Rubbed

### Stereo

- Premium Sound System w/
- Transom Remote
- Satellite Radio System
- Speakers (1 pr.), Arch/Tower
- Stereo Remote, Transom

### Exterior

- COBALT Oval Logo, Recessed
- Arch, Aluminum, Fwd. Folding w/Bimini
- Docking Lights-Stainless Steel
- Fender Clips w/Line (4)
- Flagpole w/Flag
- Flip-Down Swim Step w/Ladder
- Flip-Down Swim Step w/o Ladder
- Motorbox Actuator
- Sof-Trac Mat (std swim platform)
- Sof-Trac Mat (swim platform w/step)
- Stainless Steel Tower w/Bimini Top
- Stainless Steel Tower w/Sunshade
- Swim Platform Transom Lighting
- Transom Shower
- Transom Tilt Switch
- Underwater Lighting
- Wakeboard Racks w/Swivel
- (2) requires tower

### Interior

- Aft Walk-Thru Carpet
- Aft Walk-Thru Gate
- Air Compressor w/Holder
- Carpet, Cesera (Sand & Terra)
- Del Mar Sport Seating
- Dinette Table w/cockpit receptacle
- Floor Covering, Sea Grass (Sand & Terra)
- Remote Courtesy Lights w/key fob
- Stainless Steel Foot Tread (helm only)
- Throw Pillows, cockpit

## Structure / Safety / Performance

- Battery Switch, Dual w/VSR
- Battery Tender/Charger, 110v
- Battery Tender/Charger, 220v
- Captain's Call Exhaust
- Captain's Call Plus (w/Mufflers)
- CE Requirements w/Automatic
- Fire Extinguisher
- Cruise Control (Perfect Pass) w/GPS
- Fire Extinguisher, Automatic System
- Tool Kit
- Trim Tabs
- Windlass w/Line, Chain & Anchor



R5

COBALT BOATS

BR SERIES

## COBALT R5



At Cobalt we listen to what our owners and our dealers tell us. We listen with interest and with respect. We listen, and we learn. Case in point: the revolutionary Cobalt R5.

Asked to create a mid-sized runabout with traditional elegance and the smoothest of quiet rides. An exterior profile sleek, low, and aggressive. Very, very aggressive, per the R5's Edge graphics, set forward of the sculpted truth that is the R5's transom, swim platform, and sunpad -- cohesive in their integrated design, free-flowing in their easy functionality. The back-rest is convertible, and the space forward is wide and wider still, with an interior beam almost a foot wider than the ever so super-spacious 242's. We then followed with yachtesque, wraparound seating to capitalize on those wishes for a flawless ride, a ride begun of course in that legendary Cobalt hull. A console door, elegant in its crafted vinyls, opens to a head larger above and all-around than any other boat in the class.

The helm gleams in hand-craftsmanship, in oil-rubbed ebony Makassar trim, switches of stainless steel and five-inch digital gauges and, over all a form-fitted eyebrow. The wheel wraps in leather: one of the most time-honored of Cobalt traditions. Our owners have always insisted on comfort and convenience and accessibility and so the R5's armrests and footrests and controls and cupholders and every last little amenity aboard arrives with a form and a function. And one more name to drop: the Rockford Fosgate stereo, optimized and ready, as we say, to crank.

The new Cobalt R5 then. Good things come to all who have spoken.





# R5



**BR** SERIES

## COBALT R5



### SPECIFICATIONS

Length Overall w/Swim Platform	25' 8"	7.82 m
Beam	8' 6"	2.59 m
Interior Cockpit Width	95"	2.41 m
Deadrise at Transom	21°	21°
Fuel Capacity	50 gal.	189 L
Freshwater Capacity	10 gal.	38 L
Bridge Clearance w/o Bimini	64"	1.63 m
Bridge Clearance w/Bimini	91"	2.31 m
Draft Drive Up	21"	.53 m
Draft Drive Down	37"	.94 m
Dry Weight	4880 lbs.	2214 kg
Boat Certified Capacity	14 persons	
Boat Certified Capacity w/gear	2250 lbs.	1021 kg

### MERCUISER STERNDRIVE POWER

350 Mag MPI ECT B3	300 php	224 PkW
377 Mag MPI ECT B3	320 php	239 PkW
8.2 Mag ECT B3	380 php	283 PkW
8.2 Mag HO ECT B3	430 php	321 PkW

### VOLVO PENTA STERNDRIVE POWER

V8-300C DP	300 php	224 PkW
V8-320C DP	320 php	239 PkW
V8-380C DP	380 php	283 PkW

### ENGINE OPTIONS

Anti-Corrosion System  
 DTS (Merc)  
 EVC (Volvo)  
 Ocean-X (Volvo)  
 Seacore (Merc)



## STANDARD EQUIPMENT

### Dash and Instrumentation

Accessory Power Plug - 12 Volt  
 Aluminum Dash Panels  
 Black Leather/SS Steering Wheel  
 Compass, Digital  
 Composite Helm Eyebrow,  
 Custom Stitching  
 Dash Perimeter Wood Accent  
 Depth & Water/Air Temp Gauge Pkg.  
 Hour Meter  
 Illuminated Switch Panel/Switches  
 Stainless Steel Switches

### Stereo

AM-FM, Single CD Stereo w/6 Speakers  
 iPod/USB/MP3 Port  
 Stereo Remote, Dash

### Exterior

Anchor Locker  
 Bow Scuff Plate, Stainless Steel  
 Extended Running Surface  
 Graphics, Molded-In Gelcoat  
 Midship Cleats  
 Ski Pylon - Stainless Steel  
 Sky Light (Head Compartment)  
 SS Tubular Platform Perimeter Rail  
 Stainless Steel Engine Vents  
 Stainless Top Trim Windshield  
 Swim Platform w/Flip-Down Swim Step

### Interior

Aft Sunpad w/Adjustable Backrest  
 Bow Cushion Insert, Stbd.  
 Bow Walk-Thru Doors  
 Carpet, 40 oz., Snap-In w/Neoprene Back  
 Head w/Porta Potti  
 Passenger Seat Flip Backrest System  
 Removable Bow & Cockpit Carpet  
 Seating Varadense Comfort  
 Sundeck Convertible Lounger

### Structure / Safety / Performance

10/5/3 Year Warranty Protection  
 Battery Switch, Single  
 Circuit Breaker Protected Elec System  
 Composite Floor  
 Composite Transom  
 Fiberglass Cockpit Liner  
 Fiberglass Stringer System

Fire Extinguisher, Manual  
 Ignition Safety Switch  
 Kevlar Reinforced Hull  
 Stainless Steel Windshield Braces  
 Through Prop Exhaust

## OPTIONAL EQUIPMENT

### Canvas

Bimini Top  
 Bow Tonneau Cover  
 Cockpit Tonneau Cover  
 Mooring Cover

### Dash and Instrumentation

GPS w/Weather, Garmin 740, w/Maps  
 GPS, Garmin 740, w/Maps  
 Rudder Indicator, Merc  
 Rudder Indicator, Volvo

### Stereo

Premium Sound System w/  
 Transom Remote  
 Satellite Radio System  
 Stereo Remote, Transom

### Exterior

COBALT Oval Logo, Recessed  
 Docking Lights-Stainless Steel  
 Fender Clips w/Line (4)  
 Flagpole w/Flag  
 Motorbox Actuator  
 Portal Light (1 in Head Compartment)  
 Sof-Trac Mat (swim platform w/step)  
 Swim Platform Transom Lighting  
 Transom Shower  
 Transom Tilt Switch  
 Underwater Lighting

### Interior

Aft Walk-Thru Carpet  
 Air Compressor w/Holder  
 Bow Center Cushion Insert  
 Carpet, Cesera (Sand & Terra)  
 Del Mar Helm Capt. Chair  
 Dinette Table w/cockpit receptacle  
 Floor Covering, Sea Grass (Sand & Terra)  
 Grey Water System  
 Head w/Electric Porcelain Toilet  
 Head w/Electric Porcelain, Macerator  
 Head w/Pump Out Porta-Potti  
 Head w/Pump Out Porta-Potti, Macerator

Remote Courtesy Lights w/key fob  
 Sink Console (head compartment)  
 Stainless Steel Foot Tread (helm only)  
 Throw Pillows, cockpit

### Structure / Safety / Performance

Battery Switch, Dual w/VSR  
 Battery Tender/Charger, 110v  
 Battery Tender/Charger, 220v  
 Captain's Call Exhaust  
 Captain's Call Plus (w/Mufflers)  
 CE Requirements w/Automatic  
 Fire Extinguisher  
 Cruise Control (Perfect Pass) w/GPS  
 Fire Extinguisher, Automatic System  
 Tool Kit  
 Trim Tabs  
 Windlass w/Line, Chain & Anchor



262

COBALT BOATS

BR SERIES

## COBALT 262



Conceived on a Friday afternoon, brought about by boat-builders who really, really like what they do, the 262 is a hoot. And it's all intentional.

First, you must know that you have room here for fifteen, only a couple of whom must behave themselves. The 262's layout creates open, flowing movement from the side walk-thru astern throughout the interior and its show-stopping good looks, over-sized storage molded into the cockpit. Attractions astern involve most of all a gigantic L-lounge and a beach of a sunpad. The appeals to the senses are subtle but pervasive, from the miracle sheen of the gelcoat to Corian in the head compartment, from the automotive luxury of the upholstery to the broadcast quality of the stereo system.

At cruise the 262 is at once authoritative, nimble, and quick, with you in firm, obvious command at a no-nonsense helm with all instrumentation right there, the turns tight and aggressive, the wake appropriate to the athletic activity out behind.

Again this weekend you'll find cool waters, warm sunshine, a gentle breeze, and a boat that will encourage . . . no, demand . . . that the good times roll.





# 262



**BR** SERIES

## COBALT 262



### SPECIFICATIONS

Length Overall w/o Swim Platform	25' 7"	7.80 m
Length Overall w/ Swim Platform	27' 7"	8.41 m
Beam	8' 6"	2.59 m
Interior Cockpit Width	89"	2.26 m
Deadrise at Transom	21°	21°
Fuel Capacity	73 gal.	276 L
Freshwater Capacity	10 gal.	38 L
Bridge Clearance w/o Bimini	5' 3"	1.60 m
Bridge Clearance w/Arch or Tower	8' 2"	2.49 m
Draft Drive Up	21"	.53 m
Draft Drive Down	37"	.94 m
Dry Weight	5425 lbs.	2461 kg
Boat Certified Capacity	15 persons	15 persons
Boat Certified Capacity w/gear	2585 lbs.	1173 kg

**WSS**

Water Sports Series Compatible

### MERCUISER STERNDRIVE POWER

350 Mag MPI ECT B3	300 php	224 PkW
377 Mag MPI ECT B3	320 php	239 PkW
8.2 Mag ECT B3	380 php	283 PkW
8.2 Mag HO ECT B3	430 php	321 PkW

### VOLVO PENTA STERNDRIVE POWER

V8-300C DP	300 php	224 PkW
V8-320C DP	320 php	239 PkW
V8-380C DP	380 php	283 PkW

### ENGINE OPTIONS

Anti-Corrosion System  
 DTS (Merc)  
 EVC (Volvo)  
 Ocean-X (Volvo)  
 Seacore (Merc)



## STANDARD EQUIPMENT

### Dash and Instrumentation

Accessory Power Plug - 12 Volt  
Aluminum Dash Panels  
Black Leather/SS Steering Wheel  
Composite Helm Eyebrow,  
Custom Stitching  
Depth & Water/Air Temp Gauge Pkg.  
Hour Meter  
Illuminated Switch Panel/Switches  
Stainless Steel Switches

### Stereo

AM-FM, Single CD Stereo w/6 Speakers  
iPod/MP3 Port  
Stereo Remote, Dash

### Exterior

Anchor Locker  
Bow Scuff Plate, Stainless Steel  
Extended Running Surface  
Graphics, Molded-In Gelcoat  
Midship Cleats  
Ski Pylon - Stainless Steel  
SS Tubular Platform Perimeter Rail  
Stainless Steel Engine Vents  
Stainless Top Trim Windshield  
Swim Platform, Extended w/Ladder

### Interior

Aft Sunpad w/Adjustable Backrest  
Aft Sunpad w/Walk-Thru Transom  
Bow Cushion Insert, Port & Stbd.  
Bow Walk-Thru Doors  
Carpet, 40 oz., Snap-In w/Neoprene Back  
Head w/Porta Potti  
Removable Bow & Cockpit Carpet  
Seating Varadense Comfort  
Seating, Dual Flip-Lip Buckets  
Trash Receptacle

### Structure / Safety / Performance

10/5/3 Year Warranty Protection  
Battery Switch, Single  
Circuit Breaker Protected Elec System  
Composite Floor  
Composite Transom  
Fiberglass Cockpit Liner  
Fiberglass Stringer System  
Fire Extinguisher, Manual  
Ignition Safety Switch

Kevlar Reinforced Hull  
Stainless Steel Windshield Braces  
Through Prop Exhaust

## OPTIONAL EQUIPMENT

### Canvass

Bimini Top  
Bow Tonneau Cover  
Cockpit Tonneau Cover  
Mooring Cover

### Dash and Instrumentation

GPS w/Weather, Garmin 640, w/maps  
GPS, Garmin 640, w/maps  
Wood Dash/Trim Pkg., Oil Rubbed

### Stereo

Premium Sound System w/  
Transom Remote  
Satellite Radio System  
Speakers (1 pr.), Arch/Tower  
Stereo Remote, Transom

### Exterior

COBALT Oval Logo, Recessed  
Arch, Aluminum, Fwd. Folding w/Bimini  
Docking Lights-Stainless Steel  
Fender Clips w/Line (4)  
Flagpole w/Flag  
Flip-Down Swim Step w/Ladder  
Flip-Down Swim Step w/o Ladder  
Motorbox Actuator  
Portal Light (1 in Head Compartment)  
Sof-Trac Mat (std swim platform)  
Sof-Trac Mat (swim platform w/step)  
Stainless Steel Tower w/Bimini Top  
Stainless Steel Tower w/Sunshade  
Swim Platform Transom Lighting  
Transom Shower  
Transom Tilt Switch  
Underwater Lighting  
Wakeboard Racks w/Swivel  
(2) requires tower

### Interior

Aft Walk-Thru Carpet  
Aft Walk-Thru Gate  
Air Compressor w/Holder  
Carpet, Cesera (Sand & Terra)  
Del Mar Sport Seating  
Dinette Table w/cockpit receptacle

Floor Covering, Sea Grass (Sand & Terra)  
Grey Water System  
Head w/Electric Porcelain Toilet  
Head w/Electric Porcelain, Macerator  
Head w/Pump Out Porta Potti  
Head w/Pump Out Porta Potti, Macerator  
Remote Courtesy Lights w/key fob  
Sink Console (Head Compartment)  
Stainless Steel Foot Tread (helm only)  
Throw Pillows, cockpit

### Structure / Safety / Performance

Battery Switch, Dual w/VSR  
Battery Tender/Charger, 110v  
Battery Tender/Charger, 220v  
Captain's Call Exhaust  
Captain's Call Plus (w/Mufflers)  
CE Requirements w/Automatic  
Fire Extinguisher  
Cruise Control (Perfect Pass) w/GPS  
Fire Extinguisher, Automatic System  
Tool Kit  
Trim Tabs  
Windlass w/Line, Chain & Anchor



276

COBALT BOATS

BR SERIES

## COBALT 276



Own the 276, a sure sign of certain success. With quiet achievement all around, here's a boat for the ages.

On the one hand you have all this elegance: classic lines flowing toward sea-level at the molded swim platform and its polished stainless, double-needle diamond stitchery on the upholstery, deeper colors in suede-soft vinyls – creams and ivories and sands now, a dash arguably the most gorgeous ever to grace a Cobalt.

On the other hand you look overhead to an arch that is bold, edgy alright, its whoosh and swoop matched to that of the hull, a bimini top fusing high style and high performance. Then you sit in a bow that is actually elongated, but looking longer still, a walkway extending all the way to the windlass and, well, you're not sure if you've purchased a bowrider or a performance cruiser, if your 276 is subtle or something else.

Not to worry, a glassine cove waits just ahead. The one you love sits next to you, and you'll have time to decide. All the time in this sweet old world.





# 276



**BR**SERIES

## COBALT 276



### Specifications

Length Overall w/ Swim Platform	27' 6"	8.38 m
Beam	8' 6"	2.59 m
Interior Cockpit Width	87 1/4"	2.20 m
Deadrise at Transom	21°	21°
Fuel Capacity	95 gal	360 L
Freshwater Capacity	10 gal	37.8 L
Bridge Clearance w/o Bimini	4' 11"	1.50 m
Bridge Clearance w/Arch or Tower	6' 7 1/2"	2.02 m
Draft Drive Up	27"	.69 m
Draft Drive Down	39"	.99 m
Dry Weight	5500 lbs	2495 kg
Boat Certified Capacity	Yacht Certified	
Boat Certified Capacity w/gear	Yacht Certified	

### MerCruiser Sterndrive Power

8.2 Mag ECT B3	380 php	283 PkW
8.2 Mag HO ECT B3	430 php	321 PkW

### Volvo Penta Sterndrive Power

V8-380C DP	380 php	283 PkW
------------	---------	---------

### ENGINE OPTIONS

DTS (Merc)  
 EVC (Volvo)  
 Ocean-X (Volvo)  
 Seacore (Merc)



## STANDARD EQUIPMENT

### Dash and Instrumentation

- Accessory Power Plug - 12 Volt
- Aluminum Dash Panels
- Black Leather/SS Steering Wheel
- Compass (digital)
- Composite Helm Eyebrow,
- Custom Stitching
- Depth & Water/Air Temp Gauge Pkg.
- Hour Meter
- Stainless Steel Switches
- Wood Dash/Trim Pkg., Oil Rubbed

### Stereo

- AM-FM, Single CD Stereo w/6 Speakers
- iPod/MP3 Port
- Stereo Remote, Dash

### Exterior

- Anchor Locker
- Bow Scuff Plate, Stainless Steel
- Extended Running Surface
- Graphics, Molded-In Gelcoat
- Midship Cleats
- Motorbox Actuator
- Ski Pylon - Stainless Steel
- SS Tubular Platform Perimeter Rail
- Stainless Steel Engine Vents
- Stainless Top Trim Windshield
- Swim Platform, Integrated w/Ladder

### Interior

- L Lounge Cockpit Seating
- Aft Sunpad w/Adjustable Backrest
- Aft Sunpad w/Walk-Thru Transom
- Bow Walk-Thru Doors
- Carpet, 40 oz., Snap-In w/Neoprene Back
- Cockpit Storage Console
- Double Wide Helm Seat
- Head w/Porta Potti
- Passenger Seat Flip Backrest System
- Removable Bow & Cockpit Carpet
- Seating Varadense Comfort
- Seating, Helm Flip-Up
- Sink Console (head compartment)
- Trash Receptacle
- Wrap-Around Bow Seating

### Structure / Safety / Performance

- 10/5/3 Year Warranty Protection
- Battery Switch, Single

- Circuit Breaker Protected Elec System
- Composite Floor
- Composite Transom
- Fiberglass Cockpit Liner
- Fiberglass Stringer System
- Fire Extinguisher, Manual
- Ignition Safety Switch
- Kevlar Reinforced Hull
- Stainless Steel Windshield Braces
- Through Prop Exhaust

## OPTIONAL EQUIPMENT

### Canvas

- Bimini Top
- Bow Tonneau Cover
- Cockpit Tonneau Cover
- Mooring Cover

### Dash and Instrumentation

- GPS w/Weather, Garmin 640, w/maps
- GPS, Garmin 640, w/maps
- Rudder Indicator, Merc
- Rudder Indicator, Volvo

### Stereo

- Premium Sound System w/
- Transom Remote
- Premium Sound w/Transom
- Remote & Speakers
- Satellite Radio System
- Stereo Remote, Transom

### Exterior

- COBALT Oval Logo, Recessed
- Arch, Bi-Color Lighting
- Docking Lights-Stainless Steel
- Fender Clips w/Line (4)
- Flagpole w/Flag
- Flip-Down Swim Step w/o Ladder
- Hull Bottom Full Color
- Portal Light (1 in Head Compartment)
- Sof-Trac Mat (extd swim platform w/step)
- Sof-Trac Mat (std swim platform)
- Stainless Steel Arch w/Bimini Top
- Swim Platform Transom Lighting
- Teak Swim Platform & Aft Walk-Thru
- Transom Shower
- Transom Tilt Switch
- Underwater Lighting

## Interior

- Aft Walk-Thru Carpet
- Air Compressor w/Holder
- Bow Center Cushion Insert
- Carpet, Cesera (Sand & Terra)
- Cockpit Heater
- Dinette Table w/cockpit receptacle
- Faucet, Cockpit Sink
- Floor Covering, Sea Grass (Sand & Terra)
- Grey Water System
- Head w/Elec Porcelain Toilet w/Macerator
- Head w/Electric Porcelain Toilet
- Head w/Pump Out Porta Potti
- Head w/Pump Out Porta Potti, Macerator
- Remote Courtesy Lights w/key fob
- Stainless Steel Foot Tread (helm only)
- Throw Pillows, cockpit

## Structure / Safety / Performance

- Battery Switch, Dual w/VSR
- Battery Tender/Charger, 110v
- Battery Tender/Charger, 220v
- Captain's Call Exhaust
- Captain's Call Plus (w/Mufflers)
- CE Requirements w/Automatic
- Fire Extinguisher
- Cruise Control (Perfect Pass) w/GPS
- Fire Extinguisher, Automatic System
- Tool Kit
- Trim Tabs
- Windlass w/Line, Chain & Anchor



296

COBALT BOATS

BR SERIES

## COBALT 296



Single or twin engine, the 296 keeps its promises.

For a boat of its length and beam, the single-engine 296 jumps on plane with noteworthy suddenness. With two engines, the word is 'launch.' That said, the ride here is hushed, soothing, and soft, much like the 296's interior, with a layout here that is both custom –from throw pillows to club configuration – and unlike any other bowrider's. A space more limousine than marine. The comfort accumulates astern in all-weather, personalized luxury straight out of your living room. Wraparound conversation is waiting in the bow.

The options list is meaningful – refrigerators and joysticks for docking and touch-screen GPS and arches with lighting. The power options are stout and authoritative. The hull yearns for open water, ready to show off handling at once robust and responsive.

The 296 then, a loving marriage of refinement and raw power. A diamond on an aquamarine sea.





THROW PILLOW MOTORBOX CUSHIONS



VINYL COVERED MOTORBOX CUSHIONS



GALLEY CONSOLE OPTION



STANDARD INTERIOR



CLUB INTERIOR OPTION



**BR** SERIES

## COBALT 296



### SPECIFICATIONS

Length Overall w/ Swim Platform	30' 2"	9.19 m
Hull Length	28' 5"	8.69 m
Beam	9' 5"	2.90 m
Interior Cockpit Width	8' 8"	2.64 m
Deadrise at Transom	21°	21°
Fuel Capacity	123 gal	457 L
Freshwater Capacity	18 gal	68 L
Holding Tank Capacity	18 gal	68 L
Bridge Clearance w/o Bimini	4' 11"	1.49 m
Bridge Clearance w/Arch	7' 11"	2.41 m
Draft Drive Up, Single Eng.	25"	63.5 cm
Draft Drive Down, Single Eng.	37"	93.9 cm
Draft Drive Up, Twin Eng.	27"	68.6 cm
Draft Drive Down, Twin Eng.	39"	99 cm
Dry Weight, w/Single Engine	7350 lbs	3334 kg
Dry Weight, w/Twin Engines	8740 lbs	3964 kg
Boat Certified Capacity	Yacht Certified	
Boat Certified Capacity w/gear	Yacht Certified	

### MERCUISER STERNDRIVE POWER

8.2 Mag ECT B3	380 php	283 PkW
8.2 Mag HO ECT B3	430 php	321 PkW
Twin 350 Mag MPI ECT B3	300 php	224 PkW
Twin 377 Mag MPI ECT B3	320 php	239 PkW
Twin 8.2 Mag ECT B3	380 php	283 PkW
Twin 8.2 Mag HO ECT B3	430 php	321 PkW

### VOLVO PENTA STERNDRIVE POWER

V8-380C DP	380 php	283 PkW
Twin V8-300C DP	300 php	224 PkW
Twin V8-320C DP	320 php	239 PkW
Twin V8-380C DP	380 php	283 PkW

### ENGINE OPTIONS

Anti-Corrosion System-twin  
 Axis Basic (DTS)-Merc twin  
 DTS (Merc)  
 EVC (Volvo)  
 Joystick Sterndrive (EVC)-Vol twin  
 Ocean-X (Volvo)  
 Seacore (Merc)



## STANDARD EQUIPMENT

### Dash and Instrumentation

- Accessory Power Plug - 12 Volt
- Aluminum Dash Panels
- Binnacle Mount Control-Single Engine
- Black Leather/SS Steering Wheel
- Compass (digital)
- Composite Helm Eyebrow,
- Custom Stitching
- Depth & Water/Air Temp Gauge Pkg.
- Hour Meter
- Livorsi Engine Controls-Twin Engines
- Stainless Steel Switches

### Stereo

- AM-FM, Single CD Stereo w/6 Speakers
- iPod/MP3 Port
- Stereo Remote, Dash

### Exterior

- Anchor Locker
- Bow Scuff Plate, Stainless Steel
- Extended Running Surface
- Graphics, Molded-In Gelcoat
- Midship Cleats
- Motorbox Actuator
- Ski Pylon - Stainless Steel
- SS Tubular Platform Perimeter Rail
- Stainless Steel Engine Vents
- Stainless Top Trim Windshield
- Swim Platform, Extended w/Ladder

### Interior

- Aft Sunpad w/Walk-Thru Transom
- Aft Walk-Thru Carpet
- Air Compressor w/Holder
- Bow Walk-Thru Doors
- Carpet, 40 oz., Snap-In w/Neoprene Back
- Double-Wide Helm Seat w/Adj. Backrest
- Double-Wide Passenger
- Seat w/Adj. Backrest
- Head w/Pump Out Porta Potti
- Removable Bow & Cockpit Carpet
- Seating Varadense Comfort
- Sink Console (head compartment)
- Trash Receptacle

### Structure / Safety / Performance

- 10/5/3 Year Warranty Protection
- Battery Switch, Dual w/VSR
- Circuit Breaker Protected Elec System

- Composite Floor
- Composite Seat Bases
- Composite Transom
- Fiberglass Cockpit Liner
- Fiberglass Stringer System
- Fire Extinguisher, Manual
- Ignition Safety Switch
- Kevlar Reinforced Hull
- Stainless Steel Windshield Braces
- Through Prop Exhaust

## OPTIONAL EQUIPMENT

### Canvas

- Bimini Top
- Bow Tonneau Cover
- Cockpit Tonneau Cover
- Mooring Cover

### Dash and Instrumentation

- GPS w/Weather, Garmin 640, w/maps
- GPS, Garmin 640, w/maps
- Livorsi Engine Controls-Single Engine
- Rudder Indicator, Merc
- Rudder Indicator, Volvo
- Windshield Wiper-Starboard
- Wood Dash/Trim Pkg., Oil Rubbed

### Stereo

- Premium Sound w/Transom Remote
- Premium Sound w/Transom
- Remote & Speakers
- Satellite Radio System
- Stereo Remote, Transom

### Exterior

- COBALT Oval Logo, Recessed
- Arch, Bi-Color Lighting
- Docking Lights-Stainless Steel
- Fender Clips w/Line (4)
- Flagpole w/Flag
- Flip-Down Swim Step w/Ladder
- Flip-Down Swim Step w/o Ladder
- Portal Light (1 in Head Compartment)
- Retractable Dock Lines (locking)
- Sof-Trac Mat (std swim platform)
- Sof-Trac Mat (swim platform w/step)
- Stainless Steel Arch w/Bimini Top
- Stainless Steel Arch w/Hard Top
- Swim Platform Transom Lighting
- Transom Shower

- Transom Tilt Switch, single engine
- Transom Tilt Switch, twin engines
- Underwater Lighting

### Interior

- Aft Walk-Thru Filler Cushions
- Bow Center Cushion Insert
- Carpet, Cesera (Sand & Terra)
- Club Seating
- Cockpit Heater
- Dinette Table w/bow & cockpit receptacle
- Floor Covering, Sea Grass (Sand & Terra)
- Galley Unit
- Grey Water System
- Head w/Pump Out Porta Potti, Macerator
- Head w/VacuFlush
- Head w/VacuFlush, Macerator
- Motorbox, Cushions (replaces Pillows)
- Refrigerator
- Remote Courtesy Lights w/key fob
- Stainless Steel Foot Tread (helm only)
- Teak Accent Package
- Throw Pillows, cockpit

### Structure / Safety / Performance

- Battery Tender/Charger, 110v
- Battery Tender/Charger, 220v
- Captain's Call Exhaust
- Captain's Call Plus (w/Mufflers)
- CE Requirements w/Auto Fire Extinguisher
- Cruise Control (Perfect Pass) w/GPS
- Fire Extinguisher, Automatic System
- Tool Kit
- Trim Tabs
- Windlass w/Line, Chain & Anchor



302

2013 Cobalt Benchmark Collection

COBALT BOATS

BR SERIES

## COBALT 302



Engineered perfection will always remain an elusive, if admirable, goal. Please don't tell the 302.

The superlatives tell part of the story -- the largest bowrider in the Cobalt line, for example, or the most spacious cockpit in its class -- and the 302's features add their share to the argument: a sunpad large enough for side-by-side tanning, huge bow seats with new standards for forward comfort, carefully placed storage, power options ranging from aggressive to more aggressive still. Sun protection available via the bimini top, or the fiberglass hardtop with arch.

But perfection is an inclusive term, and little things can mean a lot: molded stereo speakers set at precise angles for ideal acoustics, an armrest at the throttle, a dimmer for the backlit gauges, gas assists on the ski locker, double latches at the anchor door, water-resistant rubber fillings for the canvas snaps, the wiring loomed and supported everywhere.

Tour the 302. Poke about. Open some hatches. Touch, look, listen, and prepare to smile





# 302



**BR**SERIES

## COBALT 302



### SPECIFICATIONS

Length Overall w/ Swim Platform	30' 2"	9.19 m
Length Overall w/o Swim Platform	29' 9"	9.07 m
Length Overall w/ Swim Platform	31' 6"	9.60 m
Beam	9' 11"	3.02 m
Interior Cockpit Width	8' 8"	2.64 m
Deadrise at Transom	22°	22°
Fuel Capacity	150 gal.	568 L
Freshwater Capacity	30 gal.	114 L
Bridge Clearance w/o Bimini	5' 9"	1.75 m
Bridge Clearance w/Arch or Tower	8' 2"	2.49 m
Draft Drive Up	26"	.66 m
Draft Drive Down	44"	1.12 m
Dry Weight	9880 lbs.	4481 kg
Boat Certified Capacity	Yacht Certified	
Boat Certified Capacity w/gear	Yacht Certified	

### MERCUISER STERNDRIVE POWER

Twin 350 Mag MPI ECT B3	300 php	224 PkW
Twin 377 Mag MPI ECT B3	320 php	239 PkW
Twin 8.2 Mag ECT B3	380 php	283 PkW
Twin 8.2 Mag HO ECT B3	430 php	321 PkW

### VOLVO PENTA STERNDRIVE POWER

Twin V8-300 DP	300 php	224 PkW
Twin V8-320 DP	320 php	239 PkW
Twin V8-380 DP	380 php	283 PkW

### ENGINE OPTIONS

Anti-Corrosion System  
 Axis Premier (DTS)-Merc  
 DTS (Merc)  
 EVC (Volvo)  
 Joystick Sterndrive (EVC)-Vol  
 Ocean-X (Volvo)  
 Seacore (Merc)



## STANDARD EQUIPMENT

### Dash and Instrumentation

Accessory Power Plug - 12 Volt  
 Aluminum Dash Panels  
 Black Leather/SS Steering Wheel  
 Compass  
 Composite Helm Eyebrow,  
 Custom Stitching  
 Depth & Water/Air Temp Gauge Pkg.  
 Hour Meters  
 Livorsi Engine Controls  
 Stainless Steel Switches

### Stereo

AM-FM, Single CD Stereo w/6 Speakers  
 iPod/MP3 Port  
 Stereo Remote, Dash

### Exterior

Anchor Locker  
 Bow Scuff Plate, Stainless Steel  
 Extended Running Surface  
 Graphics, Molded-In Gelcoat  
 Midship Cleats  
 Motorbox Actuator  
 Ski Tow Eye - Stainless Steel  
 SS Tubular Platform Perimeter Rail  
 Stainless Steel Engine Vents  
 Swim Platform, Extended w/Ladder  
 Transom Storage/Ice Chest

### Interior

Aft Sunpad w/Adjustable Backrest  
 Aft Sunpad w/Walk-Thru Transom  
 Aft Walk-Thru Carpet  
 Air Compressor w/Holder  
 Bow Cushion Inserts, Port & Stbd.  
 Bow Walk-Thru Doors  
 Carpet, 40 oz., Snap-In w/Neoprene Back  
 Cockpit Galley Unit  
 Dinette Table - Cockpit  
 Double-Wide Helm Seat  
 Head w/Pump Out Porta Potti  
 Passenger Seat Flip Backrest System  
 Removable Bow & Cockpit Carpet  
 Seating Varadense Comfort  
 Seating, Helm Flip-Up  
 Sink Console (head compartment)  
 Trash Receptacle

### Structure / Safety / Performance

10/5/3 Year Warranty Protection  
 Battery Switch, Dual w/VSR  
 Circuit Breaker Protected Elec System  
 Composite Floor  
 Composite Seat Bases  
 Composite Transom  
 Fiberglass Cockpit Liner  
 Fiberglass Stringer System  
 Fire Extinguisher, Manual  
 Ignition Safety Switch  
 Kevlar Reinforced Hull  
 Stainless Steel Windshield Braces  
 Through Prop Exhaust

## OPTIONAL EQUIPMENT

### Canvas

Bimini Top  
 Bow Tonneau Cover  
 Cockpit Tonneau Cover  
 Mooring Cover

### Dash and Instrumentation

GPS w/Weather, Garmin 740, w/maps  
 GPS, Garmin 740, w/maps  
 GPS, Garmin 740, w/Maps & Radar  
 Windshield Wiper-Starboard  
 Wood Dash/Trim Pkg., Oil Rubbed

### Stereo

Premium Sound System w/  
 Transom Remote  
 Satellite Radio System  
 Stereo Remote, Transom

### Exterior

COBALT Oval Logo, Recessed  
 Docking Lights-Stainless Steel  
 Fender Clips w/Line (6)  
 Flagpole w/Flag  
 Flip-Down Swim Step w/Ladder  
 Flip-Down Swim Step w/o Ladder  
 Portal Light (1 in Head Out Compartment)  
 Retractable Dock Lines (locking)  
 Sof-Trac Mat (std swim platform)  
 Sof-Trac Mat (swim platform w/step)  
 Stainless Steel Arch w/Bimini Top  
 Stainless Steel Arch w/Hard Top  
 Stainless Steel Windshield  
 Swim Platform Transom Lighting

Transom Shower  
 Underwater Lighting

### Interior

Aft Walk-Thru Gate  
 Carpet, Cesera (Sand & Terra)  
 Cockpit Heater  
 Floor Covering, Sea Grass (Sand & Terra)  
 Grey Water System (na w/Pump Out Head)  
 Head w/Pump Out Porta Potti, Macerator  
 Head w/VacuFlush  
 Head w/VacuFlush, Macerator  
 Refrigerator  
 Remote Courtesy Lights w/key fob  
 Shore Power Kit-110 Volt w/battery charger  
 Shore Power Kit-220 Volt w/  
 battery charger

Stainless Steel Foot Tread (helm only)  
 Teak Accent Package  
 Throw Pillows, cockpit

### Structure / Safety / Performance

Captain's Call Exhaust  
 Captain's Call Plus (w/Mufflers)  
 CE Requirements w/Auto Fire Extinguisher  
 Fire Extinguisher, Automatic System  
 Tool Kit  
 Trim Tabs  
 Windlass w/Line, Chain & Anchor



336

COBALT BOATS

BR SERIES

## COBALT 336



The new 336 will mean so much to so many, and each lucky owner will find exactly the boat of which she dreamed: sporty cruiser, massive bowrider, accommodating day boat, comfortable overnighter, performance sportboat, flat-out exhilarating machine. Each 336 owner will find the features uniquely his: the award winning Cobalt ride, the leathered luxury of the cabin, the handling of a Ferrari, layback ball-game room for a dozen buddies.

A few particular traits of the 336 jump at first look. The panoramic side windows in the hull bring the outside in and reflect the envious stares of dockside passersby. Even the windshield invites further investigation of its stainless-steel strength, its wraparound handsomeness. The cabin lies below the helm. At once snug and expansive, with a sofa stretching out there nine full feet and swiftly changeable to a berth capable of sleeping two adults. The cabin makes fine use of its spaciousness, by turns air-conditioned or heated as the day's outing or the week's cruise might require. Inside a cabinet designed to very specific purposes of entertainment and efficiency come a 32" LCD HD television, a DVD player, and a play-station hookup. The portside head compartment looms enormous, ready to double as a shower seat.

Available in twin-engine configurations, with or without joystick control, the 336 means power as needed, control as desired, luxury and comfort as expected. And, to top it off – literally, the optional stainless arch and hardtop is immediately self-explanatory in its popularity.

Begin where you like. End where you belong. As captain of the new Cobalt 336.





# 336



**BR**SERIES

## COBALT 336



### SPECIFICATIONS

Length Overall w/o Swim Platform	32' 10"	10.00 m
Length Overall w/ Swim Platform	34' 9"	10.59 m
Beam	10' 7"	3.23 m
Interior Cockpit Width	9' 0"	2.74 m
Deadrise at Transom	22°	22°
Fuel Capacity	174 gal.	659 L
Freshwater Capacity	18 gal.	68 L
Holding Tank Capacity	28 gal.	106 L
Bridge Clearance w/o Bimini	6' 5"	1.96 m
Bridge Clearance w/Arch or Tower	8' 10"	2.69 m
Draft Drive Up	24"	.61 m
Draft Drive Down	35"	.90 m
Dry Weight	12300 lbs.	5579 kg
Boat Certified Capacity	Yacht Certified	
Boat Certified Capacity w/gear	Yacht Certified	

### MERCUISER STERNDRIVE POWER

Twin 350 Mag MPI ECT B3	300 php	224 PkW
Twin 377 Mag MPI ECT B3	320 php	239 PkW
Twin 8.2 Mag ECT B3	380 php	283 PkW
Twin 8.2 Mag HO ECT B3	430 php	321 PkW

### VOLVO PENTA STERNDRIVE POWER

Twin V8-300C DP	300 php	224 PkW
Twin V8-320C DP	320 php	239 PkW
Twin V8-380C DP	380 php	283 PkW

### ENGINE OPTIONS

Axis Premier (DTS)-Merc  
 DTS (Merc)  
 EVC (Volvo)  
 Joystick Sterndrive (EVC)-Vol  
 Ocean-X (Volvo)  
 Seacore (Merc)



## STANDARD EQUIPMENT

### Dash and Instrumentation

- Accessory Power Plug - 12 Volt
- Aluminum Dash Panels
- Black Leather/SS Steering Wheel
- Compass
- Composite Helm Eyebrow, Custom Stitching
- Depth & Water/Air Temp Gauge Pkg.
- Hour Meters
- Livorsi Engine Controls
- Stainless Steel Switches

### Stereo

- AM-FM, Single CD Stereo w/8 Speakers
- iPod/USB/MP3 Port
- Stereo Remote, Dash

### Exterior

- Anchor Locker
- Bow Scuff Plate, Stainless Steel
- Extended Running Surface
- Hideaway Cockpit Dinette Table
- Midship Cleats
- Motorbox Actuator
- Panoramic Hull Windows
- Ski Tow Eye - Stainless Steel
- Sky Lights (1-Head, 1-Cabin)
- SS Tubular Platform Perimeter Rail
- Stainless Steel Engine Vents
- Stainless Top Trim Windshield
- Swim Platform, Extended w/Ladder
- Transom Storage Locker
- Transom Storage/Ice Chest

### Interior

- L Lounge Cockpit Seating
- Aft Sunpad w/Adjustable Backrest
- Aft Sunpad w/Walk-Thru Transom
- Aft Walk-Thru Carpet
- Air Compressor w/Holder
- Benchseat Storage
- Bow Walk-Thru Door
- Cabin Door w/Sliding Screen & Window
- Carpet, 40 oz., Snap-In w/Neoprene Back
- Double Wide Helm Seat
- Galley, Cockpit
- Head Compartment w/Shower
- Head w/VacuFlush
- Passenger Seat Flip Backrest System

- Removable Cockpit Carpet
- Seating Varadense Comfort
- Seating, Helm Flip-Up
- Shore Power Kit-110 Volt w/battery charger
- Sink Console (head compartment)
- Throw Pillows, cabin

### Structure / Safety / Performance

- 10/5/3 Year Warranty Protection
- Battery Switch, Dual w/VSR
- Circuit Breaker Protected Elec System
- Composite Floor
- Composite Transom
- Fiberglass Cockpit Liner
- Fiberglass Stringer System
- Fire Extinguisher, Manual
- Hot Water Heater w/Exchanger (110 Volt)
- Ignition Safety Switch
- Kevlar Reinforced Hull
- Stainless Steel Windshield Braces
- Through Prop Exhaust
- Trim Tabs

## OPTIONAL EQUIPMENT

### Canvas

- Bimini Top
- Bow Tonneau Cover
- Cockpit Tonneau Cover
- Mooring Cover

### Dash and Instrumentation

- GPS w/Weather, Garmin 740, w/Maps
- GPS, Garmin 740 w/Maps
- Wood Dash/Trim Pkg., Oil Rubbed

### Stereo

- Cabin Entertainment Package (TV/DVD)
- Cable TV Connection
- Premium Sound w/Transom
- Remote & Speakers
- Satellite Radio System
- Stereo Remote, Transom
- TV Antenna (Arch mounted)

### Exterior

- COBALT Oval Logo, Recessed
- Docking Lights-Stainless Steel
- Fender Clips w/Line (6)
- Flagpole w/Flag
- Flip-Down Swim Step w/Ladder
- Flip-Down Swim Step w/o Ladder

- Retractable Dock Lines (locking)
- Sof-Trac Mat (std swim platform)
- Sof-Trac Mat (swim platform w/step)
- Stainless Steel Arch w/Bimini Top
- Stainless Steel Arch w/Hard Top
- Swim Platform Transom Lighting
- Teak Accent Package
- Transom Shower
- Transom Tilt Switches
- Underwater Lighting

### Interior

- Aft Walk-Thru Gate
- Air Conditioning/Heating
- Bow Center Cushion Insert
- Cabin Cabinetry, Espresso
- Cabin Cabinetry, Mahogany
- Carpet, Cesera (Sand & Terra)
- Cockpit Heater
- Dinette Table w/bow & cabin receptacle
- Floor Covering, Sea Grass (Sand & Terra)
- Grey Water System
- Head w/VacuFlush, Macerator
- Refrigerator
- Refrigerator/Microwave Pkg., cockpit
- Remote Courtesy Lights w/key fob
- Shore Power Kit-220 Volt w/battery charger
- Stainless Steel Foot Tread (helm only)
- Throw Pillows, cockpit

### Structure / Safety / Performance

- Captain's Call Exhaust
- Captain's Call Plus (w/Mufflers)
- CE Req. w/Auto Fire Ext. & Generator
- CE Requirements w/Auto Fire Extinguisher
- Cruise Control (Smart Tow) w/DTS
- Fire Extinguisher, Automatic System
- Fire Extinguisher, Automatic System (generator)
- Generator (5kw)
- Tool Kit
- Windlass w/Line, Chain & Anchor



A25

COBALT BOATS

A SERIES

## COBALT A 25



The A25 represents genuine innovation, design and engineering capable of changing your perceptions of what a large run-about might be. What to make of all this?

With last year's introduction of the A25, Cobalt Boats returned to our roots in marine design, to fundamental enhancements of the boating experience. Amid the pressures of recurring new model years, it's tempting to claim "innovations" that amount to little more than window-dressing. Not here, not in these A-Series boats.

Observe the hull, where only a five-piece mold could produce the functionality of a running surface with consequent reduced bow rise at acceleration, more stability in turns, more comfort at cruise. Walk astern to the deployable swim platform with a patented step. Take the helm with new Cobalt Touch Tech navigation. Notice the easier boarding on the A25, its revolutionary extensions of storage in both access and convenience, the flexibility of the seating arrangements, the ergonomics throughout.

Your Cobalt dealer will explain further. Expect a discussion you've not heard before.







Geneva Interior Option



**A**SERIES

## COBALT A25



### SPECIFICATIONS

Length Overall w/ Swim Platform	25' 6"	7.77 m
Beam	8' 6"	2.59 m
Interior Cockpit Width	89"	2.26 m
Deadrise at Transom	21°	21°
Fuel Capacity	50 gal.	189 L
Freshwater Capacity	10 gal.	38 L
Bridge Clearance w/o Bimini	4' 11"	1.50 m
Bridge Clearance w/Arch or Tower	8' 2"	2.49 m
Draft Drive Up	30"	.76 m
Draft Drive Down	39"	.99 m
Dry Weight	5,125 lbs.	2,325 kg
Boat Certified Capacity	15 persons	15 persons
Boat Certified Capacity w/gear	2,065 lbs.	937 kg

### MERCUISER STERNDRIVE POWER

350 Mag MPI ECT B3	300 php	313 PkW
377 Mag MPI ECT B3	320 php	239 PkW
8.2 Mag ECT B3	380 php	283 PkW
8.2 Mag HO ECT B3	430 php	321 PkW

### VOLVO PENTA STERNDRIVE POWER

V8-300C DP	300 php	313 PkW
V8-320 DP	320 php	239 PkW
V8-380 DP	380 php	283 PkW

### ENGINE OPTIONS

Anti-Corrosion System  
 DTS (Merc)  
 EVC (Volvo)  
 Ocean-X (Volvo)  
 Seacore (Merc)



## STANDARD EQUIPMENT

### Dash and Instrumentation

Accessory Power Plug - 12 Volt  
 Aluminum Dash Panels  
 Black Leather/SS Steering Wheel  
 Compass (digital)  
 Composite Helm Eyebrow,  
 Custom Stitching  
 Depth & Water/Air Temp Gauge Pkg.  
 Hour Meter  
 Stainless Steel Switches  
 Wood Dash/Trim Pkg., Oil Rubbed

### Stereo

AM-FM, Single CD Stereo w/6 Speakers  
 iPod/MP3 Port  
 Stereo Remote, Dash

### Exterior

Anchor Locker  
 Bow Scuff Plate, Stainless Steel  
 Extended Running Surface  
 Extended Swim Platform w/Ladder  
 Fender Storage Lockers, Port & Stbd.  
 Graphics, Molded-In Gelcoat  
 Midship Cleats  
 Motorbox Actuator  
 Ski Pylon - Stainless Steel  
 SS Tubular Platform Perimeter Rail  
 Stainless Steel Hull Accents  
 Stainless Top Trim Windshield

### Interior

Aft Sunpad w/Walk-Thru Transom  
 Aft Walk-Thru Carpet  
 Bow Filler Cushions, Port & Stbd.  
 Bow Walk-Thru Doors  
 Carpet, 40 oz., Snap-In w/Neoprene Back  
 Helm Seat, Flip Up/Swiveling  
 Passenger Seat Flip Backrest System  
 Removable Bow & Cockpit Carpet  
 Seating Varadense Comfort  
 Sundeck Convertible Lounger

### Structure / Safety / Performance

10/5/3 Year Warranty Protection  
 Battery Switch, Single  
 Circuit Breaker Protected Elec System  
 Composite Floor  
 Composite Transom  
 Fiberglass Cockpit Liner

Fiberglass Stringer System  
 Fire Extinguisher, Manual  
 Ignition Safety Switch  
 Kevlar Reinforced Hull  
 Stainless Steel Windshield Braces  
 Through Prop Exhaust

## OPTIONAL EQUIPMENT

### Canvas

Bimini Top  
 Bow Tonneau Cover  
 Cockpit Tonneau Cover  
 Mooring Cover

### Dash and Instrumentation

GPS w/Weather, Garmin 640, w/maps  
 GPS, Garmin 640, w/maps  
 Rudder Indicator, Merc  
 Rudder Indicator, Volvo

### Stereo

Premium Sound System w/  
 Transom Remote  
 Premium Sound w/Transom  
 Remote & Speakers  
 Satellite Radio System  
 Stereo Remote, Transom

### Exterior

Docking Lights-Stainless Steel  
 Fender Clips w/Line (4)  
 Flagpole w/Flag  
 Sof-Trac Mat  
 Stainless Steel Arch w/Bimini Top  
 Swim Platform - Hydraulic w/Ladder  
 Swim Platform Transom Lighting  
 Transom Shower  
 Transom Tilt Switch  
 Underwater Lighting

### Interior

Aft Walk-Thru Gate  
 Air Compressor w/Holder  
 Bow Center Cushion Insert  
 Carpet, Cesera (Sand & Terra)  
 Dinette Table w/bow & cockpit receptacle  
 Floor Covering, Sea Grass (Sand & Terra)  
 Remote Courtesy Lights w/key fob  
 Stainless Steel Foot Tread  
 (helm & passenger)  
 Throw Pillows, cockpit

## Structure / Safety / Performance

Battery Switch, Dual w/VSR  
 Battery Tender/Charger, 110v  
 Battery Tender/Charger, 220v  
 Captain's Call Exhaust - n/a with Volvo  
 Captain's Call Plus (w/  
 Mufflers) - n/a with Volvo  
 CE Requirements w/Automatic  
 Fire Extinguisher  
 Cruise Control (Perfect Pass) w/GPS  
 Fire Extinguisher, Automatic System  
 Tool Kit  
 Trim Tabs  
 Windlass w/Anchor



A28

COBALT BOATS

A SERIES

## COBALT A28



The larger, even roomier, more powerful A28 has been built for discriminating boaters of all ages.

With its three feet of extra space, the A28 amplifies the A25's proven virtues, none more important than a ride now approaching perfection. But we begin with looks, the handsomeness of an inverse hull whose complexity only yacht makers have seen fit to attempt, the sweep of a profile that can come only from Cobalt hand-craftsmanship. The A28 interior will wow, as a soft aura of luxury surrounds you and your guests. The bow is broader in the beam, roomy and then some, with immediately reconfigurable seating. More practicality here too, in the added head compartment and yet more storage.

In the quantum leaps in technology, among all its genuinely new features, the A28 shows forth hour upon skilled man-hour of refined Cobalt craftsmanship – in the upholstery, at the helm, in the rubbed perfection of the gelcoat – and the payoff comes in years of reliable, worry-free enjoyment.

But then, you knew that.







Geneva Interior Option (shown on the A25)

# A28

A SERIES



## COBALT A28



### SPECIFICATIONS

Length Overall w/ Swim Platform	28'6"	8.68 m
Beam	8' 6"	2.59 m
Interior Cockpit Width	88"	2.25 m
Deadrise at Transom	21°	21°
Fuel Capacity	90 gal.	341 L
Freshwater Capacity	10 gal.	38 L
Bridge Clearance w/o Bimini	4' 11"	1.50 m
Bridge Clearance w/Arch or Tower	90"	2.29 m
Draft Drive Up	30"	.76 m
Draft Drive Down	39"	.99 m
Dry Weight	5,460 lbs.	2,477 kg
Boat Certified Capacity	Yacht Certified	
Boat Certified Capacity w/gear	Yacht Certified	

### MERCUISER STERNDRIVE POWER

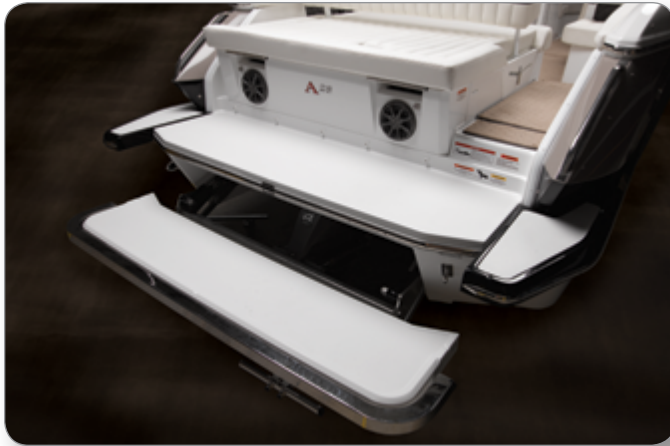
8.2 Mag ECT B3	380 php	283 PkW
8.2 Mag HO ECT B3	430 php	321 PkW

### VOLVO PENTA STERNDRIVE POWER

V8-380C DP	380 php	283 PkW
------------	---------	---------

### ENGINE OPTIONS

DTS (Merc)  
 EVC (Volvo)  
 Ocean-X (Volvo)  
 Seacore (Merc)



## STANDARD EQUIPMENT

### Dash and Instrumentation

- Accessory Power Plug - 12 Volt
- Aluminum Dash Panels
- Black Leather/SS Steering Wheel
- Compass (digital)
- Composite Helm Eyebrow,
- Custom Stitching
- Depth & Water/Air Temp Gauge Pkg.
- Hour Meter
- Stainless Steel Switches
- Wood Dash/Trim Pkg., Oil Rubbed

### Stereo

- AM-FM, Single CD Stereo w/6 Speakers
- iPod/MP3 Port
- Stereo Remote, Dash

### Exterior

- Anchor Locker
- Bow Scuff Plate, Stainless Steel
- Extended Running Surface
- Fender Storage Locker, Stbd.
- Graphics, Molded-In Gelcoat
- Midship Cleats
- Motorbox Actuator
- Portal Light (1-head compartment)
- Ski Pylon - Stainless Steel
- SS Tubular Platform Perimeter Rail
- Stainless Steel Hull Accents
- Stainless Top Trim Windshield
- Swim Platform, Extended w/Ladder

### Interior

- Aft Sunpad w/Walk-Thru Transom
- Aft Walk-Thru Carpet
- Bench Seat Storage, cockpit/bow
- Bow Filler Cushions, Port & Stbd.
- Bow Walk-Thru Doors
- Carpet, 40 oz., Snap-In w/Neoprene Back
- Cockpit Galley w/Sink
- Dinette Table, Cockpit
- Head w/Porta-Potti
- Helm Seat, Flip Up/Swiveling
- Passenger Seat Flip Backrest System
- Removable Bow & Cockpit Carpet
- Seating Varadense Comfort
- Sink Console (head compartment)
- Sundeck Convertible Lounger

### Structure / Safety / Performance

- 10/5/3 Year Warranty Protection
- Battery Switch, Single
- Circuit Breaker Protected Elec System
- Composite Floor
- Composite Transom
- Fiberglass Cockpit Liner
- Fiberglass Stringer System
- Fire Extinguisher, Manual
- Ignition Safety Switch
- Kevlar Reinforced Hull
- Stainless Steel Windshield Braces
- Through Prop Exhaust

## OPTIONAL EQUIPMENT

### Canvas

- Bimini Top
- Bow Tonneau Cover
- Cockpit Tonneau Cover
- Mooring Cover

### Dash and Instrumentation

- GPS w/Weather, Garmin 640, w/maps
- GPS, Garmin 640, w/maps
- Rudder Indicator, Merc
- Rudder Indicator, Volvo

### Stereo

- Premium Sound System w/Transom Remote
- Premium Sound w/Transom Remote & Speakers
- Satellite Radio System
- Stereo Remote, Transom

### Exterior

- Docking Lights-Stainless Steel
- Fender Clips w/Line (4)
- Flagpole w/Flag
- Sof-Trac Mat
- Stainless Steel Arch w/Bimini Top
- Swim Platform - Hydraulic w/Ladder
- Swim Platform Transom Lighting
- Transom Shower
- Transom Tilt Switch
- Underwater Lighting

### Interior

- Aft Walk-Thru Gate
- Air Compressor w/Holder
- Bow Center Cushion Insert

- Carpet, Cesera (Sand & Terra)
- Dinette Table, Bow
- Floor Covering, Sea Grass (Sand & Terra)
- Head w/Electric Porcelain Toilet
- Head w/Electric Porcelain, Macerator
- Head w/Pump Out Porta Potti
- Head w/Pump Out Porta Potti w/Macerator
- Refrigerator (cockpit)
- Remote Courtesy Lights w/key fob
- Stainless Steel Foot Tread (helm)
- Throw Pillows, cockpit

### Structure / Safety / Performance

- Battery Switch, Dual w/VSR
- Battery Tender/Charger, 110v
- Battery Tender/Charger, 220v
- Captain's Call Exhaust - n/a with Volvo
- Captain's Call Plus (w/Mufflers) - n/a with Volvo
- CE Requirements w/Automatic
- Fire Extinguisher
- Cruise Control (Perfect Pass) w/GPS
- Fire Extinguisher, Automatic System
- Tool Kit
- Trim Tabs
- Windlass w/Anchor



243

2013 Cobalt Benchmark Collection

COBALT BOATS

3 SERIES

Pg. 76

## COBALT 243



This boat has been proven to induce over-zealous responses from its owners. Everyone take a deep breath as we proceed.

Even lifelong bowrider folks are choosing the 243, having seen its dragsteresque acceleration, its Indy-car handling at top speeds, especially in the company of Cobalt hallmarks of value, in features both standard and optional. No sacrifice here of boorah performance in trade neither for a large and quite spectacular cabin, nor for a head compartment whose entry door is a masterpiece of double-duty engineering. The 243 uses its spaciousness to full effect, most especially in ski storage and in cockpit appliances where a sink console highlights an interior among Cobalt's most sophisticated ever. The cabin, splendid in its appointments, offers a full eight feet of bedtime berth, an oversized deck hatch and opening portal to bring in the sea air.

Full speed ahead then, weekenders and confirmed cuddy owners. Full speed ahead.







## COBALT 243



### Specifications

Length Overall w/o Swim Platform	23' 11"	7.29 m
Length Overall w/ Swim Platform	25' 11"	7.90 m
Beam	8' 6"	2.59 m
Interior Cockpit Width	87"	2.20 m
Deadrise at Transom	21°	21°
Fuel Capacity	50 gal.	189 L
Freshwater Capacity	10 gal.	38 L
Bridge Clearance w/o Bimini	5' 3"	1.60 m
Bridge Clearance w/Arch or Tower	8' 2"	2.49 m
Draft Drive Up	21"	.53 m
Draft Drive Down	37"	.94 m
Dry Weight	4600 lbs.	2087 m
Boat Certified Capacity	13 persons	13 persons
Boat Certified Capacity w/gear	2250 lbs.	1021 kg

### MerCruiser Sterndrive Power

350 Mag MPI ECT B3	300 php	224 PkW
377 Mag MPI ECT B3	320 php	239 PkW
8.2 Mag ECT B3	380 php	283 PkW
8.2 Mag HO ECT B3	430 php	321 PkW

### Volvo Penta Sterndrive Power

V8-300C DP	300 php	224 PkW
V8-320C DP	320 php	239 PkW
V8-380C DP	380 php	283 PkW

### ENGINE OPTIONS

Anti-Corrosion System  
 DTS (Merc)  
 EVC (Volvo)  
 Ocean-X (Volvo)  
 Seacore (Merc)



## STANDARD EQUIPMENT

### Dash and Instrumentation

Accessory Power Plug - 12 Volt  
 Aluminum Dash Panels  
 Black Leather/SS Steering Wheel  
 Composite Helm Eyebrow,  
 Custom Stitching  
 Depth & Water/Air Temp Gauge Pkg.  
 Hour Meter  
 Stainless Steel Switches

### Stereo

AM-FM, Single CD Stereo w/6 Speakers  
 iPod/MP3 Port  
 Stereo Remote, Dashh

### Exterior

Anchor Locker  
 Bow Scuff Plate, Stainless Steel  
 Extended Running Surface  
 Graphics, Molded-In Gelcoat  
 Midship Cleats  
 Portal Lights-2 (fwd. cabin)  
 Ski Pylon - Stainless Steel  
 SS Tubular Platform Perimeter Rail  
 Stainless Steel Engine Vents  
 Stainless Top Trim Windshield  
 Swim Platform, Extended w/Ladder

### Interior

Aft Sunpad w/Adjustable Backrest  
 Aft Sunpad w/Walk-Thru Transom  
 Aft Walk-Thru Carpet  
 Cabin/Head Entry Doors (sliding)  
 Carpet, 40 oz., Snap-In w/Neoprene Back  
 Enclosed Head w/Porta Potti  
 Removable Cockpit Carpet  
 Seating Varadense Comfort  
 Seating, Dual Flip-Lip Buckets  
 Seating, Helm Flip-Up

### Structure / Safety / Performance

10/5/3 Year Warranty Protection  
 Battery Switch, Single  
 Circuit Breaker Protected Elec System  
 Composite Floor  
 Composite Transom  
 Fiberglass Cockpit Liner  
 Fiberglass Stringer System  
 Fire Extinguisher, Manual  
 Ignition Safety Switch

Kevlar Reinforced Hull  
 Stainless Steel Windshield Braces  
 Through Prop Exhaust

## OPTIONAL EQUIPMENT

### Canvas

Bimini Enclosure Package  
 Bimini Top  
 Cockpit Tonneau Cover  
 Mooring Cover

### Dash and Instrumentation

GPS w/Weather, Garmin 640, w/maps  
 GPS, Garmin 640, w/maps  
 Windshield Wiper-Starboard  
 Wood Dash/Trim Pkg., Oil Rubbed

### Stereo

Cabin Entertainment Package (TV/DVD)  
 Premium Sound System w/Transom Remote  
 Satellite Radio System  
 Speakers (1 pr.), Tower  
 Stereo Remote, Transom  
 Tower Speakers (req. Prem.Sound, Dual Batt.)

### Exterior

Arch, Aluminum, Fwd. Folding w/Bimini  
 COBALT Oval Logo, Recessed  
 Docking Lights-Stainless Steel  
 Fender Clips w/Line (4)  
 Flagpole w/Flag  
 Flip-Down Swim Step w/Ladder  
 Flip-Down Swim Step w/o Ladder  
 Foredeck Sunpad  
 Motorbox Actuator  
 Portal Lights-2 (1-head, 1-aft cabin)  
 Sof-Trac Mat (std swim platform)  
 Sof-Trac Mat (swim platform w/step)  
 Stainless Steel Bow Rails 10"  
 Stainless Steel Tower w/Bimini Top  
 Swim Platform Transom Lighting  
 Transom Shower  
 Transom Tilt Switch  
 Underwater Lighting  
 Wakeboard Racks w/Swivel, requires tower

### Interior

Aft Walk-Thru Gate  
 Air Compressor w/Holder  
 Cabin Table/Filler Cushion Pkg.  
 Carpet, Cesera (Sand & Terra)

Chiller Plate (cockpit)  
 Cockpit Heater  
 Del Mar Sport Seating  
 Dinette Table w/cockpit receptacle  
 Floor Covering, Sea Grass (Sand & Terra)  
 Foredeck Step "Euro Style"  
 Head Sink/Storage Console  
 Head w/Electric Porcelain Toilet  
 Head w/Electric Porcelain, Macerator  
 Pump Out Head  
 Pump Out Head w/Macerator  
 Remote Courtesy Lights w/Key fob  
 Sink Console, Cockpit  
 Stainless Steel Foot Tread (helm only)  
 Throw Pillows, cockpit

### Structure / Safety / Performance

Battery Switch, Dual w/VSR  
 Battery Tender/Charger, 110v  
 Battery Tender/Charger, 220v  
 Captain's Call Exhaust  
 Captain's Call Plus (w/Mufflers)  
 CE Requirements w/Automatic  
 Fire Extinguisher  
 Fire Extinguisher  
 Cruise Control (Perfect Pass) w/GPS  
 Fire Extinguisher, Automatic System  
 Tool Kit  
 Trim Tabs  
 Windlass w/Line, Chain & Anchor



273

COBALT BOATS

3SERIES

## COBALT 273

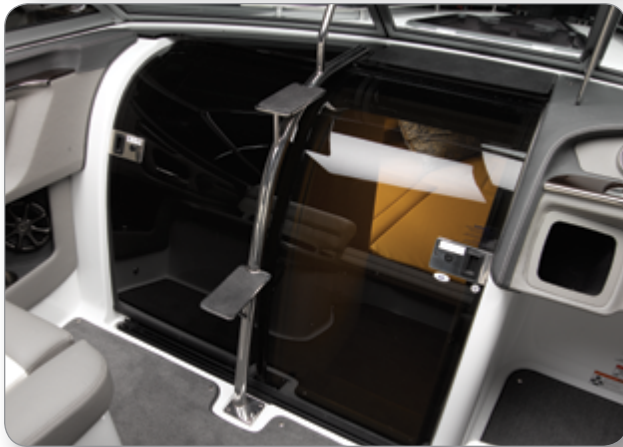


After five decades of boat-building, assumptions come easily. With the 273, we challenged every one of them.

Cobalt wants you to have the easy grace and masterfully channeled power of a cruiser, its Mediterranean glamour, its style and substance. We also wanted you to enjoy the romance of a cuddy, with power underway and elegance afloat. So. We theorized that in the nexus of those features would come the 273, an amalgam of luxury, utility, convenience, comfort, and performance that speaks to the needs of essentially every owner. Perhaps the most inclusive boat Cobalt has ever built, the 273 brings roominess of interior spaces, rich textures and thoughtful appointments in the cabin, one-hand handling, and a silky ride. Genius.

Pure genius. Anyway you look at it.







3 SERIES

## COBALT 273

**SPECIFICATIONS**

Length Overall w/o Swim Platform	27'6"	8.38 m
Length Overall w/Swim Platform	28'10"	8.79 m
Beam	8' 6"	2.59 m
Interior Cockpit Width	87"	2.20 m
Deadrise at Transom	21°	21°
Fuel Capacity	95 gal.	360 L
Freshwater Capacity	10 gal.	38 L
Holding Tank Capacity	10 gal.	38 L
Bridge Clearance w/o Bimini	4'11"	1.50 m
Bridge Clearance w/Arch or Tower	7'7"	2.31 m
Draft Drive Up	27"	.69 m
Draft Drive Down	39"	.99 m
Dry Weight	5,800 lbs	2631 m
Boat Certified Capacity	Yacht Certified	
Boat Certified Capacity w/gear	Yacht Certified	

**MERCUISER STERNDRIVE POWER**

377 Mag MPI ECT B3	320 php	239 PkW
8.2 Mag ECT B3	380 php	283 PkW
8.2 Mag HO ECT B3	430 php	321 PkW

**VOLVO PENTA STERNDRIVE POWER**

V8-320C DP	320 php	239 PkW
V8-380C DP	380 php	283 PkW

**ENGINE OPTIONS**

DTS (Merc)  
 EVC (Volvo)  
 Ocean-X (Volvo)  
 Seacore (Merc)



## STANDARD EQUIPMENT

### Dash and Instrumentation

- Accessory Power Plug - 12 Volt
- Aluminum Dash Panels
- Black Leather/SS Steering Wheel
- Compass, digital
- Composite Helm Eyebrow,
- Custom Stitching
- Depth & Water/Air Temp Gauge Pkg.
- Hour Meter
- Stainless Steel Switches
- Wood Dash/Trim Pkg., Oil Rubbed

### Stereo

- AM-FM, Single CD Stereo w/6 Speakers
- iPod/MP3 Port
- Stereo Remote, Dash

### Exterior

- Anchor Locker
- Bow Scuff Plate, Stainless Steel
- Extended Running Surface
- Graphics, Molded-In Gelcoat
- Midship Cleats
- Motorbox Actuator
- Portal Lights (4)
- Ski Pylon - Stainless Steel
- SS Tubular Platform Perimeter Rail
- Stainless Steel Engine Vents
- Stainless Top Trim Windshield
- Swim Platform, Integrated w/Ladder

### Interior

- L Lounge Cockpit Seating
- Aft Sunpad w/Adjustable Backrest
- Aft Sunpad w/Walk-Thru Transom
- Bench Seat Storage, cockpit
- Carpet, 40 oz., Snap-In w/Neoprene Back
- Cockpit Storage Console
- Double-Wide Helm Seat
- Enclosed Head w/Porta Potti
- Passenger Seat Flip Backrest System
- Removable Cockpit Carpet
- Seating Varadense Comfort
- Sink Console, Head Compartment
- Trash Receptacle

### Structure / Safety / Performance

- 10/5/3 Year Warranty Protection
- Battery Switch, Single
- Circuit Breaker Protected Elec System

- Composite Floor
- Composite Transom
- Fiberglass Cockpit Liner
- Fiberglass Stringer System
- Fire Extinguisher, Manual
- Ignition Safety Switch
- Kevlar Reinforced Hull
- Stainless Steel Windshield Braces
- Through Prop Exhaust

## OPTIONAL EQUIPMENT

### Canvas

- Bimini Enclosure Package
- Bimini Top
- Cockpit Tonneau Cover
- Mooring Cover

### Dash and Instrumentation

- GPS w/Weather, Garmin 640, w/maps
- GPS, Garmin 640, w/maps
- Rudder Indicator, Merc
- Rudder Indicator, Volvo
- Windshield Wiper-Starboard

### Stereo

- Cabin Entertainment Package (TV/DVD)
- Premium Sound System w/
- Transom Remote
- Premium Sound w/Transom
- Remote & Spkrs.
- Satellite Radio System
- Stereo Remote, Transom

### Exterior

- COBALT Oval Logo, Recessed
- Docking Lights-Stainless Steel
- Fender Clips w/Line (4)
- Flagpole w/Flag
- Flip-Down Swim Step w/o Ladder
- Foredeck Sunpad
- Sof-Trac Mat (std swim platform)
- Sof-Trac Mat (swim platform w/step)
- Stainless Steel Arch w/Bimini Top
- Stainless Steel Bow Rails 10"
- Swim Platform Transom Lighting
- Teak Swim Platform & Aft Walk-Thru
- Transom Shower
- Transom Tilt Switch
- Underwater Lighting

## Interior

- Aft Walk-Thru Carpet
- Aft Walk-Thru Filler Cushion
- Air Compressor w/Holder
- Cabin Table/Filler Cushion Pkg.
- Carpet, Cesera (Sand & Terra)
- Chiller Plate (cockpit)
- Cockpit Heater
- Dinette Table w/cockpit receptacle
- Faucet, Cockpit Sink
- Floor Covering, Sea Grass (Sand & Terra)
- Foredeck Step "Euro Style"
- Grey Water System
- Head w/Electric Porcelain Toilet
- Head w/Electric Porcelain, Macerator
- Pump Out Head
- Pump Out Head w/Macerator
- Remote Courtesy Lights w/Key fob
- Stainless Steel Foot Tread (helm only)
- Throw Pillows, cockpit

## Structure / Safety / Performance

- Battery Switch, Dual w/VSR
- Battery Tender/Charger, 110v
- Battery Tender/Charger, 220v
- Captain's Call Exhaust
- Captain's Call Plus (w/Mufflers)
- CE Requirements w/Automatic
- Fire Extinguisher
- Cruise Control (Perfect Pass) w/GPS
- Fire Extinguisher, Automatic System
- Tool Kit
- Trim Tabs
- Windlass w/Line, Chain & Anchor



323

2013 Cobalt Benchmark Collection

COBALT BOATS

3SERIES

## COBALT 323



The 323 will show its best self on red-letter days of your own devising.

The 323's big engines chug to full-rumble force, and the sense comes that today is going to be memorable, celebratory, different in the company of a boat so welcoming in its sheer size, its inclusiveness in an interior that bespeaks comfort and relaxation and easy, easy going. The storage is yawning. The attention to enjoyment's details meticulous: the flip-out table, the stainless and teak ladder to the bow, the cockpit seats nudged next to the sunpad for optimized lounging, all the right high-end appliances in the galley, the wet bar, a helm station aeronautically precise in its control of the 323's high, high horsepower. The cabin serves a couple's evening together or a small group of friends' game of hold 'em. The 323 is at cruise.

And a few hours of your life seem, subtly but most assuredly, better.







# 323

**3**SERIES

## COBALT 323



### SPECIFICATIONS

Length Overall w/o Swim Platform	32' 10"	10.00 m
Length Overall w/ Swim Platform	34' 9"	10.59 m
Beam	10' 7"	3.23 m
Interior Cockpit Width	9' 0"	2.74 m
Deadrise at Transom	22°	22°
Fuel Capacity	174 gal.	659 L
Freshwater Capacity	18 gal	68 L
Holding Tank Capacity	28 gal.	106 L
Bridge Clearance w/o Bimini	6' 5"	1.96 m
Bridge Clearance w/Arch or Tower	8' 10"	2.69 m
Draft Drive Up	24"	.61 m
Draft Drive Down	35"	.90 m
Dry Weight	12300 lbs.	5579 kg
Boat Certified Capacity	Yacht Certified	
Boat Certified Capacity w/gear	Yacht Certified	

### MERCUISER STERNDRIVE POWER

Twin 350 Mag MPI ECT B3	300 php	224 PkW
Twin 377 Mag MPI ECT B3	320 php	239 PkW
Twin 8.2 Mag ECT B3	380 php	283 PkW
Twin 8.2 Mag HO ECT B3	430 php	321 PkW

### VOLVO PENTA STERNDRIVE POWER

Twin V8-300C DP	300 php	224 PkW
Twin V8-320C DP	320 php	239 PkW
Twin V8-380C DP	380 php	283 PkW

### ENGINE OPTIONS

Axius Premier (DTS)-Merc  
 DTS (Merc)  
 EVC (Volvo)  
 Joystick Sterndrive (EVC)-Vol  
 Ocean-X (Volvo)  
 Seacore (Merc)



## STANDARD EQUIPMENT

### Dash and Instrumentation

- Accessory Power Plug - 12 Volt
- Aluminum Dash Panels
- Black Leather/SS Steering Wheel
- Composite Helm Eyebrow,
- Custom Stitching
- Depth & Water/Air Temp Gauge Pkg.
- GPS, Garmin 640, w/maps
- Hour Meters
- Livorsi Engine Controls
- Stainless Steel Switches
- Wood Dash/Trim Pkg., Oil Rubbed

### Stereo

- AM-FM, Single CD Stereo w/6 Speakers
- iPod/MP3 Port
- Stereo Remote, Dash

### Exterior

- Anchor Locker
- Bow Scuff Plate, Stainless Steel
- Extended Running Surface
- Midship Cleats
- Motorbox Actuator
- Recessed Hull-Side Logo
- Ski Tow Eye - Stainless Steel
- SS Tubular Platform Perimeter Rail
- Stainless Steel Engine Vents
- Stainless Steel Foredeck Ladder
- Stainless Steel Foredeck Rails
- Swim Platform, Extended w/Ladder
- Transom Storage/Ice Chest

### Interior

- Aft Sunpad w/Adjustable Backrest
- Aft Sunpad w/Walk-Thru Transom
- Aft Walk-Thru Carpet
- Aft Walk-Thru Gate
- Air Compressor w/Holder
- Cabin Filler Cushion
- Carpet, 40 oz., Snap-In w/Neoprene Back
- Cedar-Lined Hanging Locker
- Dinette Table w/cockpit receptacle
- Double Wide Helm Seat
- Galley, Cabin
- Galley, Cockpit
- Head Compartment w/Shower
- Head w/VacuFlush
- Microwave

- Passenger Seat Flip Backrest System
- Refrigerator
- Removable Cockpit Carpet
- Seating Varadense Comfort
- Seating, Helm Flip-Up
- Sink Console (head compartment)
- Stove (110 Volt)

### Structure / Safety / Performance

- 10/5/3 Year Warranty Protection
- Battery Switch, Dual w/VSR
- Circuit Breaker Protected Elec System
- Composite Floor
- Composite Transom
- Fiberglass Cockpit Liner
- Fiberglass Stringer System
- Fire Extinguisher, Manual
- Hot Water Heater (110 Volt)
- Ignition Safety Switch
- Kevlar Reinforced Hull
- Shore Power Kit-110 Volt w/battery charger
- Stainless Steel Windshield Braces
- Through Prop Exhaust
- Trim Tabs

## OPTIONAL EQUIPMENT

### Canvas

- Bimini Enclosure Package
- Cockpit Tonneau Cover
- Mooring Cover

### Dash and Instrumentation

- GPS w/Weather, Garmin 640, w/maps
- VHF Radio Unit
- Windshield Wiper-Starboard

### Stereo

- Cabin Entertainment Package (TV/DVD)
- Cabin Entertainment Package (TV/DVD) w/CE
- Cable TV Connection
- Premium Sound System w/Transom Remote
- Premium Sound w/Transom Remote & Speakers
- Satellite Radio System
- Stereo Remote, Transom
- TV Antenna (Arch mounted)

### Exterior

- COBALT Oval Logo, Recessed

- Docking Lights-Stainless Steel
- Fender Clips w/Line (4)
- Flagpole w/Flag
- Flip-Down Swim Step w/Ladder
- Flip-Down Swim Step w/o Ladder
- Retractable Dock Lines (locking)
- Sof-Trac Mat (std swim platform)
- Sof-Trac Mat (swim platform w/step)
- Spotlight w/Helm Remote
- Stainless Steel Arch w/Bimini Top
- Stainless Steel Arch w/Hard Top
- Stainless Steel Bow Rails 10"
- Stainless Steel Windshield
- Swim Platform Transom Lighting
- Transom Shower
- Underwater Lighting

### Interior

- Aft Walk-Thru Gate
- Air Conditioning/Heating
- Carpet, Cesera (Sand & Terra)
- Cockpit Heater
- Floor Covering, Sea Grass (Sand & Terra)
- Grey Water System
- Head w/VacuFlush, Macerator
- Remote Courtesy Lights w/key fob
- Shore Power Kit-220 Volt w/battery charger
- Stainless Steel Foot Tread (helm only)
- Teak Accent Package
- Throw Pillows, cockpit

### Structure / Safety / Performance

- Captain's Call Exhaust
- Captain's Call Plus (w/Mufflers)
- CE Req. w/Auto Fire Ext. & Generator
- CE Requirements w/Auto Fire Extinguisher
- Fire Extinguisher, Automatic System
- Fire Extinguisher, Automatic System (generator)
- Generator (5kw)
- Tool Kit
- Windlass w/Line, Chain & Anchor



24SD

COBALT BOATS

SD SERIES

## COBALT 24SD



Cobalt customers can see the details. Each and Every one.

The 24SD brings along all the expected Cobalt standards: the easy quickness to plane, the inimitable ride, the stability in turns. And it does so with elegant simplicity, as here in the interior with its multiuse sunpad and adjustable backrest, easy accessibility with walk-thrus at bow and transom, Vara-Dense comfort in every seat, and a head with porta-potti. Well-placed storage stows a large group's carry-ons. With Cobalt, there is always choices galore, and the SD is no exception, choose the cockpit galley with sink ---or maximize your seating area with a seat in place of the galley. Choose to stand in the bow with filler cushion out, or fill the area for maximum sunning pleasure, Oh, and flip down those arm-rests, yes, that's better. And finally – at the transom - The swim platform features the patented flip-down step that took the market by storm last year. It's all here, everything necessary to keep the party going, at a pace appropriate to your needs of the moment, of the season, of a lifetime.





# 24SD



**SD** SERIES

## COBALT 24SD



### SPECIFICATIONS

Length Overall w/ Swim Platform	24' 6"	7.47 m
Beam	8' 6"	2.59 m
Interior Cockpit Width	91"	2.31 m
Deadrise at Transom	21°	21°
Fuel Capacity	50 gal	189 L
Freshwater Capacity	10 gal	37.8 L
Holding Tank Capacity	10 gal	37.8 L
Bridge Clearance w/o Bimini	4' 11"	1.50 m
Bridge Clearance w/Arch or Tower	8' 1"	2.46 m
Draft Drive Up	25"	.63 m
Draft Drive Down	37"	.94 m
Dry Weight	4800 lbs	2177 kg
Boat Certified Capacity	13 persons	
Boat Certified Capacity w/gear	1850 lbs	839 kg

**WSS**

Water Sports Series Compatible

### MERCURISER STERNDRIVE POWER

5.0 L MPI ECT B3	260 php	191 PkW
350 Mag MPI ECT B3	300 php	221 PkW
377 Mag MPI ECT B3	320 php	239 PkW
8.2 Mag ECT B3	380 php	283 PkW
8.2 Mag HO ECT B3	430 php	321 PkW

### VOLVO PENTA STERNDRIVE POWER

V8-270C DP	270 php	199 PkW
V8-300C DP	300 php	221 PkW
V8-320C DP	320 php	239 PkW
V8-380C DP	380 php	283 PkW

### ENGINE OPTIONS

Anti-Corrosion System  
 DTS (Merc)  
 EVC (Volvo)  
 Ocean-X (Volvo)  
 Seacore (Merc)



## STANDARD EQUIPMENT

### Dash and Instrumentation

Accessory Power Plug - 12 Volt  
 Aluminum Dash Panels  
 Black Leather/SS Steering Wheel  
 Compass  
 Composite Helm Eyebrow,  
 Custom Stitching  
 Depth & Water/Air Temp Gauge Pkg.  
 Hour Meter  
 Stainless Steel Switches  
 Wood Dash/Trim Pkg., Oil Rubbed

### Stereo

AM-FM, Single CD Stereo w/6 Speakers  
 iPod/MP3 Port  
 Stereo Remote, Dash

### Exterior

Anchor Locker  
 Bow Boarding Ladder, SS  
 Bow Scuff Plate, Stainless Steel  
 Docking Lights, LED  
 Extended Running Surface  
 Flip-Down Swim Step w/o Ladder  
 Graphics, Molded-In Gelcoat  
 Midship Cleats  
 Motorbox Actuator  
 Ski Pylon - Stainless Steel  
 SS Tubular Platform Perimeter Rail  
 Stainless Top Trim Windshield  
 Swim Platform, Extended w/Ladder

### Interior

L Lounge Cockpit Seating  
 Aft Sunpad w/Adjustable Backrest  
 Aft Walk-Thru Carpet  
 Aft Walk-Thru Door  
 Bench Seat Storage (bow & cockpit)  
 Bow Walk-Thru Door  
 Carpet, 40 oz., Snap-In w/Neoprene Back  
 Cockpit Seat, Stbd.  
 Cockpit Storage Console  
 Double-Wide Helm Seat  
 Head w/Porta Potti  
 Passenger Seat Flip Backrest System  
 Removable Bow & Cockpit Carpet  
 Seating Varadense Comfort  
 Walk-Thru Transom  
 Wrap-Around Bow Seating

w/Stbd Cushions

### Structure / Safety / Performance

10/5/3 Year Warranty Protection  
 Battery Switch, Single  
 Circuit Breaker Protected Elec System  
 Composite Floor  
 Composite Transom  
 Fiberglass Cockpit Liner  
 Fiberglass Stringer System  
 Fire Extinguisher, Manual  
 Ignition Safety Switch  
 Kevlar Reinforced Hull  
 Stainless Steel Windshield Braces  
 Through Prop Exhaust

## OPTIONAL EQUIPMENT

### Canvas

Bimini Top  
 Bow Tonneau Cover  
 Cockpit Tonneau Cover  
 Mooring Cover

### Dash and Instrumentation

GPS w/Weather, Garmin 640, w/maps  
 GPS, Garmin 640, w/maps  
 Rudder Indicator, Merc  
 Rudder Indicator, Volvo

### Stereo

Premium Sound System w/  
 Transom Remote  
 Premium Sound w/Transom  
 Remote & Speakers  
 Satellite Radio System  
 Stereo Remote, Transom

### Exterior

Arch, Aluminum, Fwd. Folding w/Bimini  
 Arch, Aluminum, Fwd. Folding w/Bimini  
 Bow & Transom Shower Pkg.  
 COBALT Oval Logo, Recessed  
 Fender Clips w/Line (4)  
 Flagpole w/Flag  
 Portal Light (1 in Head Compartment)  
 Sof-Trac Mat  
 Stainless Steel Arch w/Bimini Top  
 Swim Platform Transom Lighting  
 Transom Tilt Switch  
 Underwater Lighting

### Interior

Air Compressor w/Holder  
 Bow Center Cushion Insert  
 Carpet, Cesara (Sand & Terra)  
 Cockpit Heater  
 Dinette Table w/bow & cockpit receptacle  
 Floor Covering, Sea Grass (Sand & Terra)  
 Galley, Cockpit w/Sink (Replaces Seat)  
 Grey Water System  
 Head w/Electric Porcelain Toilet  
 Head w/Electric Porcelain, Macerator  
 Head w/Pump Out Porta Potti  
 Head w/Pump Out Porta Potti, Macerator  
 Refrigerator (cockpit)  
 Remote Courtesy Lights w/key fob  
 Sink Console (head compartment)  
 Stainless Steel Foot Tread (helm only)  
 Throw Pillows, cockpit

### Structure / Safety / Performance

Battery Switch, Dual w/VSR  
 Battery Tender/Charger, 110v  
 Battery Tender/Charger, 220v  
 Captain's Call Exhaust  
 Captain's Call Plus (w/Mufflers)  
 CE Requirements w/Automatic  
 Fire Extinguisher  
 Cruise Control (Perfect Pass) w/GPS  
 Fire Extinguisher, Automatic System  
 Tool Kit  
 Trim Tabs



26SD

COBALT BOATS

SD SERIES

## COBALT 26SD



The 26SD arrives, new to the line this year, eager to be precisely the boat you want it to be.

Designed to a single over-riding principle – fun follows function – the 26SD will answer your every demand for performance, for adaptability, for genuine innovation in the service of a happy, carefree day on the water. Ready with all the wide-open spaces of a deckboat, waiting with all the power and agility of a sportboat, the 26SD is every bit as much about skiing and wakeboarding as about quiet conversation on a leisurely cruise.

The 26SD's freeboard will create a ride as comfortable in coastal chop as on a mirrored lake, a hull that means quickness to plane and controlled stability in turns. Cockpit and bow alike are multi-taskers, the seating convertible every-which-way, the porta-potti all fiberglass, storage right where you need it.

Is this a great country, or what?





# 26SD



**SD**SERIES

## COBALT 26SD



### SPECIFICATIONS

Length Overall w/ Swim Platform	26' 2"	7.97 m
Beam	8' 6"	2.59 m
Interior Cockpit Width	91"	2.31 m
Deadrise at Transom	21°	21°
Fuel Capacity	50 gal	189 L
Freshwater Capacity	10 gal	37.8 L
Bridge Clearance w/o Bimini	4' 11"	1.50 m
Bridge Clearance w/Arch or Tower	6' 7"	2.02 m
Draft Drive Up	27"	.69 m
Draft Drive Down	39"	.99 m
Dry Weight	5500 lbs	2495 kg
Boat Certified Capacity	Yacht Certified	
Boat Certified Capacity w/gear	Yacht Certified	

**WSS**

Water Sports Series Compatible

### MERCUISER STERNDRIVE POWER

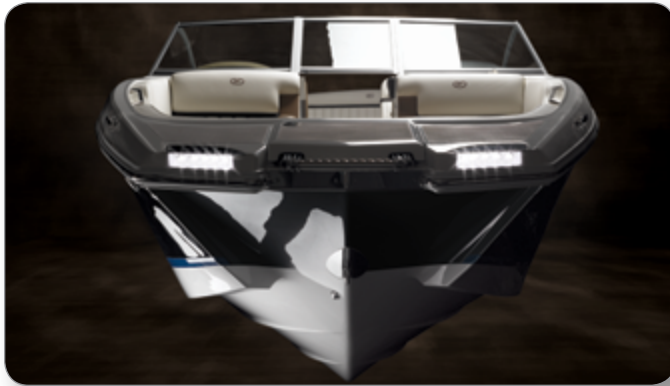
350 Mag MPI ECT B3	300 php	221 PkW
377 Mag MPI ECT B3	320 php	239 PkW
8.2 Mag ECT B3	380 php	283 PkW
8.2 Mag HO ECT B3	430 php	321 PkW

### VOLVO PENTA STERNDRIVE POWER

V8-300C DP	300 php	221 PkW
V8-320C DP	320 php	239 PkW
V8-380C DP	380 php	283 PkW

### ENGINE OPTIONS

Anti-Corrosion System  
 DTS (Merc)  
 EVC (Volvo)  
 Ocean-X (Volvo)  
 Seacore (Merc)



## STANDARD EQUIPMENT

### Dash and Instrumentation

Accessory Power Plug - 12 Volt  
 Aluminum Dash Panels  
 Black Leather/SS Steering Wheel  
 Compass  
 Composite Helm Eyebrow,  
 Custom Stitching  
 Depth & Water/Air Temp Gauge Pkg.  
 Hour Meter  
 Stainless Steel Switches  
 Wood Dash/Trim Pkg., Oil Rubbed

### Stereo

AM-FM, Single CD Stereo w/6 Speakers  
 iPod/MP3 Port  
 Stereo Remote, Dash

### Exterior

Anchor Locker  
 Bow Boarding Ladder, SS  
 Bow Scuff Plate, Stainless Steel  
 Docking Lights, LED  
 Extended Running Surface  
 Flip-Down Swim Step w/o Ladder  
 Graphics, Molded-In Gelcoat  
 Midship Cleats  
 Motorbox Actuator  
 Ski Pylon - Stainless Steel  
 SS Tubular Platform Perimeter Rail  
 Stainless Top Trim Windshield  
 Swim Platform, Extended w/Ladder

### Interior

'L' Lounge Cockpit Seating  
 Aft Sunpad w/Adjustable Backrest  
 Aft Walk-Thru Carpet  
 Aft Walk-Thru Door  
 Bench Seat Storage (bow & cockpit)  
 Bow Walk-Thru Door  
 Carpet, 40 oz., Snap-In w/Neoprene Back  
 Cockpit Seat, Stbd.  
 Cockpit Storage Console  
 Double-Wide Helm Seat  
 Head w/Porta Potti  
 Passenger Seat Flip Backrest System  
 Removable Bow & Cockpit Carpet  
 Seating Varadense Comfort  
 Walk-Thru Transom  
 Wrap-Around Bow Seating w/Stbd Cushion

### Structure / Safety / Performance

10/5/3 Year Warranty Protection  
 Battery Switch, Single  
 Circuit Breaker Protected Elec System  
 Composite Floor  
 Composite Transom  
 Fiberglass Cockpit Liner  
 Fiberglass Stringer System  
 Fire Extinguisher, Manual  
 Ignition Safety Switch  
 Kevlar Reinforced Hull  
 Stainless Steel Windshield Braces  
 Through Prop Exhaust

## OPTIONAL EQUIPMENT

### Canvas

Bimini Top  
 Bow Tonneau Cover  
 Cockpit Tonneau Cover  
 Mooring Cover

### Dash and Instrumentation

GPS w/Weather, Garmin 640, w/maps  
 GPS, Garmin 640, w/maps  
 Rudder Indicator, Merc  
 Rudder Indicator, Volvo

### Stereo

Premium Sound System w/  
 Transom Remote  
 Premium Sound w/Transom  
 Remote & Speakers  
 Satellite Radio System  
 Stereo Remote, Transom

### Exterior

Arch, Aluminum, Fwd. Folding w/Bimini  
 Arch, Aluminum, Fwd. Folding w/Bimini  
 Bow & Transom Shower Pkg.  
 COBALT Oval Logo, Recessed  
 Fender Clips w/Line (4)  
 Flagpole w/Flag  
 Portal Light (1 in Head Compartment)  
 Sof-Trac Mat  
 Stainless Steel Arch w/Bimini Top  
 Swim Platform Transom Lighting  
 Transom Tilt Switch  
 Underwater Lighting

### Interior

Air Compressor w/Holder  
 Bow Center Cushion Insert  
 Carpet, Cesara (Sand & Terra)  
 Cockpit Galley w/Sink (Replaces Seat)  
 Cockpit Heater  
 Dinette Table w/bow & cockpit receptacle  
 Floor Covering, Sea Grass (Sand & Terra)  
 Grey Water System  
 Head w/Electric Porcelain Toilet  
 Head w/Electric Porcelain, Macerator  
 Head w/Pump Out Porta Potti  
 Head w/Pump Out Porta Potti, Macerator  
 Refrigerator (cockpit)  
 Remote Courtesy Lights w/key fob  
 Sink Console (head compartment)  
 Stainless Steel Foot Tread (helm only)  
 Throw Pillows, cockpit

### Structure / Safety / Performance

Battery Switch, Dual w/VSR  
 Battery Tender/Charger, 110v  
 Battery Tender/Charger, 220v  
 Captain's Call Exhaust  
 Captain's Call Plus (w/Mufflers)  
 CE Requirements w/Automatic  
 Fire Extinguisher  
 Cruise Control (Perfect Pass) w/GPS  
 Fire Extinguisher, Automatic System  
 Tool Kit  
 Trim Tabs

# WSS

*WATER SPORTS SERIES*



COBALT BOATS

WSS

# COBALT **WSS**

The Cobalt Water Sports Series (WSS) stands fully prepared to fulfill demands of boarders, skiers, tubers, and the every summer day needs of all aboard. WSS crosses over the line of convenience and clears the wake of practicality. You can have your cake and share it with the whole crew.

The WSS takes the best ride in the industry and melds it with the features every boarder needs. Folding Water Sports Tower with Bimini Top - built pro-athlete strong with precision-machined billet fittings and custom Integrated racks for four boards in rattle-free, solid security. A flip of a swivel lock swings the racks inboard for easy access. A Sof-Trac platform mat is comfortable underfoot and creates the perfect environment to prepare for the afternoon run. The WSS Exterior graphics has the aggressive split gelcoat design that makes every WSS a personal style statement - available in hundreds of combinations in two color or three color configurations - and including a WSS hull badge and accent. The Cockpit has a design exclusive to the WSS available in 3 color choices all accented with custom color piping outlining the crisp and clean interior lines. The helm has been treated with a matte black finish to punctuate the aggressive styling cues. The WSS package can be amped up with optional stereo upgrades, tower speaker options, ballast tanks(select models), trim tabs, and perfect pass cruise control. Each WSS is unique, and each WSS fulfills a specific and very important dream. Design Your Dream WSS on our website at [CobaltBoats.com](http://CobaltBoats.com).

Features and Options	200	210	220	232	242	262	24SD	26SD
Folding Water Sports Arch	S	S	S	S	S	S	S	S
Integrated Board Racks	S	S	S	S	S	S	S	S
Arch Bimini Top	S	S	S	S	S	S	S	S
Sof-Trac Platform Mat	S	S	S	S	S	S	S	S
iPod™ Dock	S	S	S	S	S	S	S	S
Interior Upgrade (Piping Colors, Badging)	S	S	S	S	S	S	S*	S*
2 Color Sport WSS Hull Graphic	S	S	S	S	S	S	S	S
3 Color Classic WSS Hull Graphic	O	O	O	S	S	S	S	S
Ballast System	N/A	N/A	N/A	O	O	O	N/A	N/A
Cruise Control (GPS)	O	O	O	O	O	O	O	O
Tower Speakers	O	O	O	O	O	O	O	O
Transom Stereo Remote	O	O	O	O	O	O	O	O
Tower Lights	O	O	O	O	O	O	N/A	N/A
Trim Tabs	N/A	N/A	N/A	O	O	O	O	O
Driver's Rear View Mirror	O	O	O	O	O	O	O	O
Premium Sound Upgrade	O	O	O	O	O	O	O	O
Satellite Radio	O	O	O	O	O	O	O	O
WSS Touch Tech Package	N/A	N/A	N/A	O	O	O	N/A	N/A

\*Excluding piping color.



# 200 WSS



## COBALT 200 WSS



### Specifications

Length Overall w/o Swim Platform	19' 4"	5.89 m
Length Overall w/ Swim Platform	20' 10"	6.35 m
Beam	8' 4"	2.54 m
Deadrise at Transom	20°	20°
Fuel Capacity	40 gal.	151 L
Freshwater Capacity	10 gal.	38 L
Bridge Clearance w/o Bimini	3' 11"	1.19 m
Bridge Clearance w/Tower	6' 10"	2.08 m
Draft Drive Up	24"	.61 m
Draft Drive Down	37"	.94 m
Dry Weight	3500 lbs.	1588 kg
Boat Certified Capacity	11 persons	11 persons
Boat Certified Capacity w/gear	1515 lbs.	687 kg

### MerCruiser Sterndrive Power

4.3 L MPI ECT Alpha	220 php	164 PkW
4.3 L MPI ECT B3	220 php	164 PkW
4.3 L MPI Alpha (non-cat)	220 php	164 PkW
4.3 L MPI B3 (non-cat)	220 php	164 PkW
5.0 L MPI ECT Alpha	260 php	194 PkW
5.0 L MPI ECT B3	260 php	194 PkW
350 Mag MPI ECT B3	300 php	224 PkW

### Volvo Penta Sterndrive Power

V6-225 DP (non-cat)	225 php	168 PkW
V6-225 SX (non-cat)	225 php	168 PkW
V8-225C SX	225 php	168 PkW
V8-225C DP	225 php	168 PkW
V8-270C DP	270 php	201 PkW
V8-270C SX	270 php	201 PkW
V8-300C DP	300 php	224 PkW

# 210 **WSS**



## COBALT 210 **WSS**



### SPECIFICATIONS

Length Overall w/o Swim Platform	20' 4"	6.20 m
Length Overall w/ Swim Platform	22' 5"	6.83 m
Beam	8' 6"	2.59 m
Interior Cockpit Width	89"	2.26 m
Deadrise at Transom	20°	20°
Fuel Capacity	40 gal.	151 L
Freshwater Capacity	10 gal.	38 L
Bridge Clearance w/o Bimini	4' 0"	1.22 m
Bridge Clearance w/Arch or Tower	7' 7"	2.31 m
Draft Drive Up	24"	.61 m
Draft Drive Down	36"	.92 m
Dry Weight	3850 lbs.	1746 kg
Boat Certified Capacity	12 persons	12 persons
Boat Certified Capacity w/gear	1650 lbs.	748 kg

### MERCURISER STERNDRIVE POWER

4.3 L MPI ECT Alpha	220 php	164 PkW
4.3 L MPI ECT B3	220 php	164 PkW
4.3 L MPI Alpha (non-cat)	220 php	164 PkW
4.3 L MPI B3 (non-cat)	220 php	164 PkW
5.0 L MPI ECT Alpha	260 php	194 PkW
5.0 L MPI ECT B3	260 php	194 PkW
350 Mag MPI ECT B3	300 php	224 PkW

### VOLVO PENTA STERNDRIVE POWER

V8-225C SX	225 php	168 PkW
V6-225 SX (non-cat)	225 php	168 PkW
V6-225 DP (non-cat)	225 php	168 PkW
V8-225C DP	225 php	168 PkW
V8-270C DP	270 php	201 PkW
V8-270C SX	270 php	201 PkW
V8-300C DP	300 php	224 PkW

# 220 **WSS**



## COBALT 220 **WSS**



### **SPECIFICATIONS**

Length Overall w/o Swim Platform	21' 4"	6.50 m
Length Overall w/ Swim Platform	22' 10"	6.96 m
Beam	8' 6"	2.59 m
Deadrise at Transom	20°	20°
Fuel Capacity	50 gal.	189 L
Bridge Clearance w/o Bimini	3' 11"	1.19 m
Bridge Clearance w/Tower	6' 10"	2.08 m
Draft Drive Up	24"	.61 m
Draft Drive Down	37"	.94 m
Dry Weight	3700 lbs.	1678 kg
Boat Certified Capacity	12 persons	12 persons
Boat Certified Capacity w/gear	1695 lbs.	768 kg

### **MERCURISER STERNDRIVE POWER**

4.3 L MPI ECT Alpha	220 php	164 PkW
4.3 L MPI ECT B3	220 php	164 PkW
4.3 L MPI Alpha (non-cat)	220 php	164 PkW
4.3 L MPI B3 (non-cat)	220 php	164 PkW
5.0 L MPI ECT Alpha	260 php	194 PkW
5.0 L MPI ECT B3	260 php	194 PkW
350 Mag MPI ECT B3	300 php	224 PkW
377 Mag MPI ECT B3	300 php	224 PkW

### **VOLVO PENTA STERNDRIVE POWER**

V6-225 DP (non-cat)	225 php	168 PkW
V6-225 SX (non-cat)	225 php	168 PkW
V6-225C SX	225 php	168 PkW
V6-225C DP	225 php	168 PkW
V8-270C DP	270 php	201 PkW
V8-270C SX	270 php	201 PkW
V8-300C DP	300 php	224 PkW
V8-320C DP	320 php	239 PkW

232 **WSS**



**COBALT 232 WSS**



**SPECIFICATIONS**

Length Overall w/o Swim Platform	22' 6"	6.86 m
Length Overall w/ Swim Platform	25' 1"	7.64 m
Beam	8' 6"	2.59 m
Interior Cockpit Width	89"	2.26
Deadrise at Transom	21°	21°
Fuel Capacity	50 gal.	189 L
Freshwater Capacity	10 gal.	38 L
Bridge Clearance w/o Bimini	4' 9"	1.45 m
Bridge Clearance w/Arch or Tower	7' 6"	2.29 m
Draft Drive Up	26"	.66 m
Draft Drive Down	36"	.91 m
Dry Weight	4165 lbs.	1886 kg
Boat Certified Capacity	12 persons	12 persons
Boat Certified Capacity w/gear	1800 lbs.	816 kg

**MERCURISER STERNDRIVE POWER**

4.3 L MPI ECT Alpha	220 php	164 PkW
350 Mag MPI ECT B3	300 php	224 PkW
377 Mag MPI ECT B3	320 php	239 PkW
8.2 Mag ECT B3	380 php	283 PkW
8.2 Mag HO ECT B3	430 php	321 PkW

**VOLVO PENTA STERNDRIVE POWER**

V8-300C DP	300 php	224 PkW
V8-320C DP	320 php	239 PkW
V8-380C DP	380 php	283 PkW

# 242 **WSS**



## COBALT 242 **WSS**



### **SPECIFICATIONS**

Length Overall w/o Swim Platform	23' 11"	7.29 m
Length Overall w/ Swim Platform	25' 11"	7.90 m
Beam	8' 6"	2.59 m
Interior Cockpit Width	87"	2.20 m
Deadrise at Transom	21°	21°
Fuel Capacity	50 gal.	189 L
Freshwater Capacity	10 gal.	38 L
Bridge Clearance w/o Bimini	5' 3"	1.60 m
Bridge Clearance w/Arch or Tower	8' 2"	2.49 m
Draft Drive Up	21"	.53 m
Draft Drive Down	37"	.94 m
Dry Weight	4600 lbs.	2087 m
Boat Certified Capacity	13 persons	13 persons
Boat Certified Capacity w/gear	2250 lbs.	1021 kg

### **MERCURISER STERNDRIVE POWER**

350 Mag MPI ECT B3	300 php	224 PkW
377 Mag MPI ECT B3	320 php	239 PkW
8.2 Mag ECT B3	380 php	283 PkW
8.2 Mag HO ECT B3	430 php	321 PkW

### **VOLVO PENTA STERNDRIVE POWER**

V8-300C DP	300 php	224 PkW
V8-320C DP	320 php	239 PkW
V8-380C DP	380 php	283 PkW

# 262 **WSS**



## COBALT 262 **WSS**



### SPECIFICATIONS

Length Overall w/o Swim Platform	25' 7"	7.80 m
Length Overall w/ Swim Platform	27' 7"	8.41 m
Beam	8' 6"	2.59 m
Interior Cockpit Width	89"	2.26 m
Deadrise at Transom	21°	21°
Fuel Capacity	73 gal.	276 L
Freshwater Capacity	10 gal.	38 L
Bridge Clearance w/o Bimini	5' 3"	1.60 m
Bridge Clearance w/Arch or Tower	8' 2"	2.49 m
Draft Drive Up	21"	.53 m
Draft Drive Down	37"	.94 m
Dry Weight	5425 lbs.	2461 kg
Boat Certified Capacity	15 persons	15 persons
Boat Certified Capacity w/gear	2585 lbs.	1173 kg

### MERCURISER STERNDRIVE POWER

350 Mag MPI ECT B3	300 php	224 PkW
377 Mag MPI ECT B3	320 php	239 PkW
8.2 Mag ECT B3	380 php	283 PkW
8.2 Mag HO ECT B3	430 php	321 PkW

### VOLVO PENTA STERNDRIVE POWER

V8-300C DP	300 php	224 PkW
V8-320C DP	320 php	239 PkW
V8-380C DP	380 php	283 PkW

# 24SD **WSS**



## COBALT 24SD **WSS**



### SPECIFICATIONS

Length Overall w/ Swim Platform	24' 6"	7.47 m
Beam	8' 6"	2.59 m
Interior Cockpit Width	91"	2.31 m
Deadrise at Transom	21°	21°
Fuel Capacity	50 gal	189 L
Freshwater Capacity	10 gal	37.8 L
Holding Tank Capacity	10 gal	37.8 L
Bridge Clearance w/o Bimini	4' 11"	1.50 m
Bridge Clearance w/Arch or Tower	8' 1"	2.46 m
Draft Drive Up	25"	.63 m
Draft Drive Down	37"	.94 m
Dry Weight	4800 lbs	2177 kg
Boat Certified Capacity	13 persons	
Boat Certified Capacity w/gear	1850 lbs	839 kg

### MERCURISER STERNDRIVE POWER

5.0 L MPI ECT B3	260 php	191 PkW
350 Mag MPI ECT B3	300 php	221 PkW
377 Mag MPI ECT B3	320 php	239 PkW
8.2 Mag ECT B3	380 php	283 PkW
8.2 Mag HO ECT B3	430 php	321 PkW

### VOLVO PENTA STERNDRIVE POWER

V8-270C DP	270 php	199 PkW
V8-300C DP	300 php	221 PkW
V8-320C DP	320 php	239 PkW
V8-380C DP	380 php	283 PkW

# 26SD **WSS**



## COBALT 26SD **WSS**



### SPECIFICATIONS

Length Overall w/ Swim Platform	26' 2"	7.97 m
Beam	8' 6"	2.59 m
Interior Cockpit Width	91"	2.31 m
Deadrise at Transom	21°	21°
Fuel Capacity	50 gal	189 L
Freshwater Capacity	10 gal	37.8 L
Bridge Clearance w/o Bimini	4' 11"	1.50 m
Bridge Clearance w/Arch or Tower	6' 7"	2.02 m
Draft Drive Up	27"	.69 m
Draft Drive Down	39"	.99 m
Dry Weight	5500 lbs	2495 kg
Boat Certified Capacity	Yacht Certified	
Boat Certified Capacity w/gear	Yacht Certified	

### MERCUISER STERNDRIVE POWER

350 Mag MPI ECT B3	300 php	221 PkW
377 Mag MPI ECT B3	320 php	239 PkW
8.2 Mag ECT B3	380 php	283 PkW
8.2 Mag HO ECT B3	430 php	321 PkW

### VOLVO PENTA STERNDRIVE POWER

V8-300C DP	300 php	221 PkW
V8-320C DP	320 php	239 PkW
V8-380C DP	380 php	283 PkW

### ENGINE OPTIONS

Anti-Corrosion System  
 DTS (Merc)  
 EVC (Volvo)  
 Ocean-X (Volvo)  
 Seacore (Merc)

All the comfort,  
convenience, and  
innovation associated  
with the good life.



The Cobalt exclusive and patent approved Swim Step.

2013

COBALT BOATS

*BY DESIGN*

# 10-5-3 Transferable Warranty

## Ten Year Protection

---

**Hull & Deck Structure:** Floors, stringers, bulkheads, motor mounts, transom, all deck and hull joints

## Five Year Protection

---

**Engine:** Internally lubricated parts

**Stern Drive:** Internally lubricated parts in upper and lower housings, stern drive control system: power steering pump, power steering cooler, TVM module, TVM cylinder, joystick

**Intermediate Housing:** Shaft, U-joints, bearings

**Steering:** Helm, rack, cable, pump, seals and gaskets

**Power Trim:** Pump, cylinders, solenoids, switches, seals and gaskets

**Electrical:** Alternator, voltage regulator, electronic ignition module, ignition coil, starter motor, wiper motor, engine wiring harness, courtesy lights, docking lights, battery switch, battery isolator, bow light, horn, anchor light, spotlight, blower motor, electric hatch motor and switch

**Fuel Delivery:** Fuel injection control units and injectors, fuel injection pump, fuel injector rails, fuel delivery pump, flame arrestor

**Controls:** Control box, neutral safety switch, cables

**Instrumentation:** Tachometer, oil pressure, volt gauge, hour meter, speedometer, engine temperature, trim gauge, fuel gauge, air/water temperature

**Accessories:** Air conditioner, cockpit heater, engine battery charger, compass, depth finder, transducer and wiring harness, generator, refrigerator, galley sink and faucet, shore power, stainless steel deck railings, stainless steel rubrail, stainless steel hardware, stereo/CD player, amplifier(1), dash stereo remote, trim tabs, freshwater pump, toilet, stove, microwave, windlass

**Electronics:** Radar, GPS, VHF radio

**Non-Defect Failures:** Overheating, pre-ignition, detonation, scored pistons, scored cylinders, tuliped valves, carbonized rings, heat collapsed rings, burnt valves, bent valves, warped heads, heat cracked heads and block (excludes freezing), thermostat failures, sensor failures

**Additional Benefits:** Choice of towing, dock side assistance, hoist and lift out or pick up and delivery. Taxes, shop supplies, lubricants, coolants, filters, spark plugs, hoses, clamps, belts, engine tuning, and lake/sea trial when necessary for a covered repair.

## Three Year Protection

---

**Gelcoat Finish:** Protection from stress cracks, air voids or blisters

**Upholstery/Canvas:** Protection from defective materials or workmanship

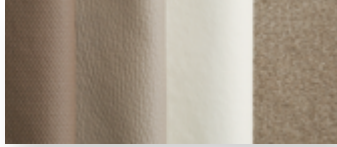
**Components:** Manufactured by Cobalt





### Cockpit Interiors

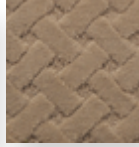
**SAND INTERIOR**  
with sandstone carpet



**SEA GRASS**  
carpet option



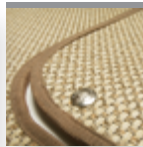
**CESARA**  
carpet option



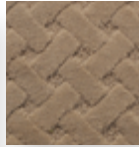
**TERRA BROWN INTERIOR**  
with sandstone carpet



**SEA GRASS**  
carpet option



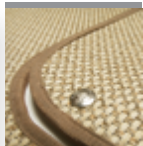
**CESARA**  
carpet option



**GENEVA INTERIOR**  
with sandstone carpet



**SEA GRASS**  
carpet option



**CESARA**  
carpet option



**SUMMIT GREY INTERIOR**  
available with summit grey carpet only



### Cabin Interiors

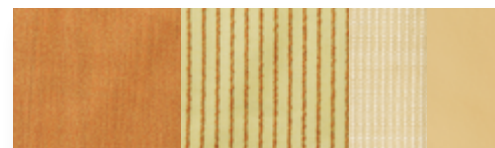
**COASTAL BLUE**



**SEA SPRAY**



**SUNSET**



### Exterior Colors and Graphic Styles



#### 3 COLOR CUSTOM GRAPHICS

White base gelcoat with any primary hull color plus an accent. Available on all models.



#### 3 COLOR CUSTOM WITH DECK STRIPE

3 Color Custom with the addition of a deck stripe. Available on the 232 only.



#### CLASSIC GRAPHICS

White base gelcoat with one primary hull color. Available on all models.



#### CLASSIC WITH DECK STRIPE

Classic with the addition of a deck stripe. Available on the 232 only.



#### FULL COLOR HULL BOTTOM

Primary hull color fully to the keel. Not available on A-Series or models 296 and larger.



#### SPORT GRAPHICS

White hull with a single accent stripe. Available on all models.



#### SPORT WITH DECK STRIPE

White hull with a single accent stripe and deck stripe. Available on the 232 only.



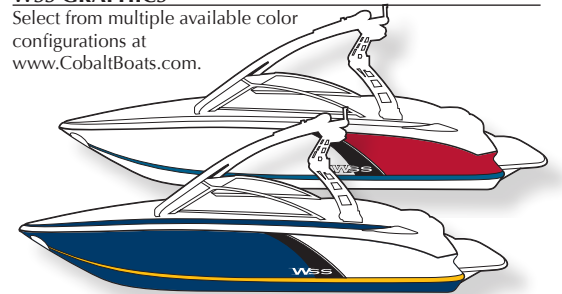
#### ALL WHITE

White hull and deck. Available on all models.



#### WSS GRAPHICS

Select from multiple available color configurations at [www.CobaltBoats.com](http://www.CobaltBoats.com).



Actual colors may vary due to the limitations of the display method and the light under which they are viewed. Consult your Cobalt dealer as equipment and specifications are subject to change without notice.



Color matched and custom tailored, Cobalt bimini tops, sun shades, enclosures and tonneau covers are made of a premium acrylic marine canvas. This material is extremely strong and fade-resistant, with superior water resistance. Yet it breathes, resisting rot and mildew.

Bimini tops setup rock solid with Cobalt's easily adjustable stainless steel turn-buckle supports. Rigidity simply not found with the use of fabric straps.



Bow and Cockpit Tonneau Covers



Mooring Cover with Winch and Cleat Drawstring System



Adjustable Turn-Buckle Supports



Bimini Top with Adjustable Turn-Buckle Supports



Bimini Top with Bimini Enclosure



Bimini Top on Water Sports Series Tower



Hardtop on Stainless Steel Arch



Bimini Top on Stainless Steel Arch

Consult your Cobalt dealer as equipment and specifications are subject to change without notice.



# 2013 OPTIONAL EQUIPMENT



Cockpit Dinette Table



Del Mar Captain's Chair



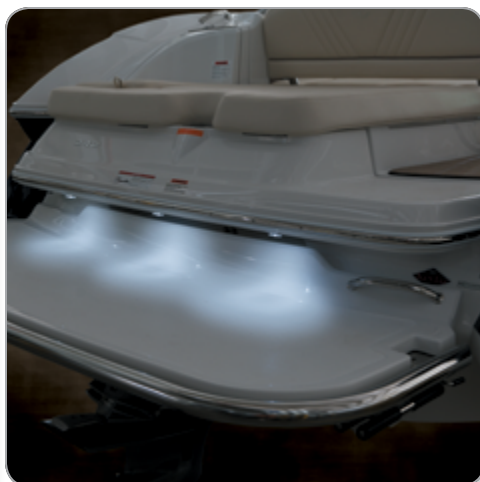
Stainless Steel Foot Tread



In-Dash GPS Units



Transom Shower



Swim Platform Lighting



Sof-Trac Mat



Transom Walk-Thru Gate

Consult your Cobalt dealer as equipment and specifications are subject to change without notice.



Recessed COBALT Oval Logo



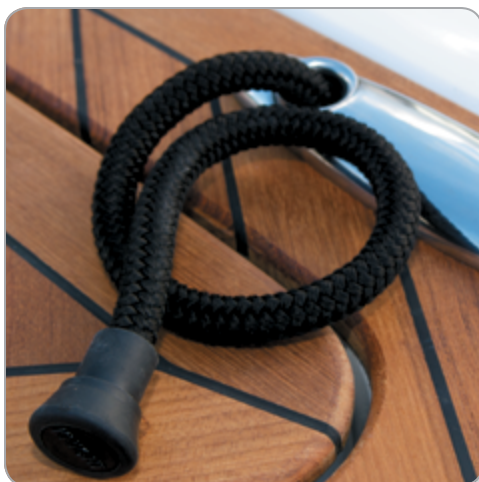
Quick-Release Fender Clips



Stainless Steel Flagpole



Stainless Steel Docking Lights



Retractable Dock Lines



Trim Tabs



Underwater Lighting



Windlass w/Anchor, Chain, & Line

Consult your Cobalt dealer as equipment and specifications are subject to change without notice.

Cobalt's uncompromising quality and innovative concepts go far beyond the seductive beauty of the watercraft, they encompass the entire boating experience with an array of lifestyle apparel and accessories designed to give you everything you need for the way you live your life.

So welcome aboard, achievers, in your thoughtful appreciation of timeless good taste and inspired functionality. We invite you to visit [CobaltSports.com](http://CobaltSports.com) to outfit your Cobalt and crew with the latest in Cobalt signature apparel, gifts and accessories.

